

[54] TOY FIGURE

[75] Inventors: **George W. Lucas, Jr.**, San Anselmo;
Ralph McQuarrie, Berkeley, both of
Calif.

[73] Assignee: **Lucasfilm Ltd.**, San Rafael, Calif.

[**] Term: **14 Years**

[21] Appl. No.: **141,464**

[22] Filed: **Apr. 18, 1980**

[51] Int. Cl. **D21-01**

[52] U.S. Cl. **D21/150**

[58] Field of Search **D21/150, 166, 171;**
46/103, 104, 105, 161, 265, 266

[56]

References Cited

U.S. PATENT DOCUMENTS

D. 102,815	1/1937	Busto	D21/166
D. 197,288	1/1964	Campbell	D21/150
D. 246,126	10/1977	Ogawa	D21/166
D. 251,627	4/1979	McQuarrie	D21/171

Primary Examiner—Melvin B. Feifer
Attorney, Agent, or Firm—Townsend and Townsend

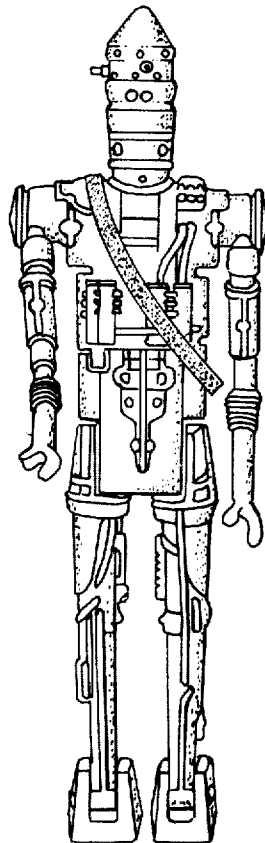
[57]

CLAIM

The ornamental design for a toy figure, substantially as shown.

DESCRIPTION

FIG. 1 is a front elevational view of a toy figure illustrating the new design;
FIG. 2 is a left side elevational view thereof;
FIG. 3 is a rear elevational view thereof;
FIG. 4 is a right side elevational view thereof;
FIG. 5 is a top plan view thereof.



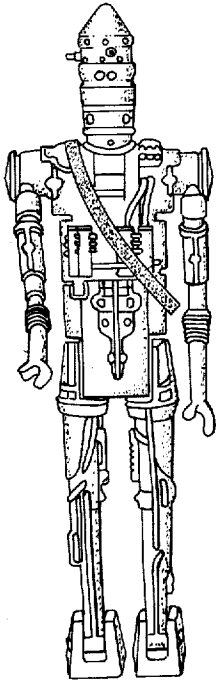


Fig. 1

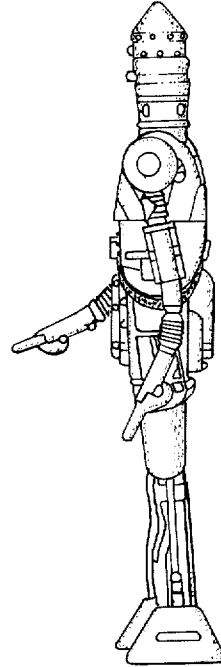


Fig. 2

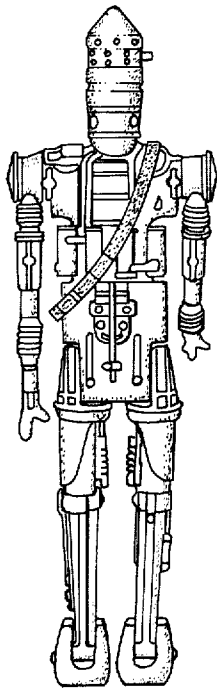


Fig. 3

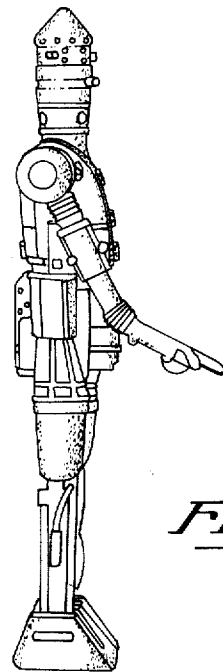


Fig. 4

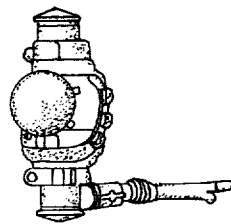


Fig. 5