

[54] TOY FIGURE

[75] Inventor: Philip A. Tippett, Oakland, Calif.

[73] Assignee: Lucasfilm, Ltd., San Rafael, Calif.

[**] Term: 14 Years

[21] Appl. No.: 426,036

[22] Filed: Sep. 28, 1982

[52] U.S. Cl. D21/148; D21/157;
D21/177

[58] Field of Search D21/148, 157, 171, 177,
D21/178, 180; D11/158, 160

[56] References Cited

U.S. PATENT DOCUMENTS

D. 141,072 5/1945 Hewson D21/157

OTHER PUBLICATIONS

Montgomery Ward Xmas Cat., 1978, p. 357, bottom, Yog.

Primary Examiner—Melvin B. Feifer
Attorney, Agent, or Firm—Townsend and Townsend

[57] CLAIM

The ornamental design for the toy figure, as shown and described.

DESCRIPTION

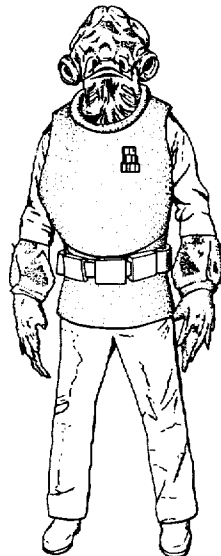
FIG. 1 is a top plan view of a toy figure showing my new design;

FIG. 2 is a front perspective view;

FIG. 3 is a left elevation view (right perspective view being a mirror image);

FIG. 4 is a rear elevation view; and

FIG. 5 is a bottom plan view.



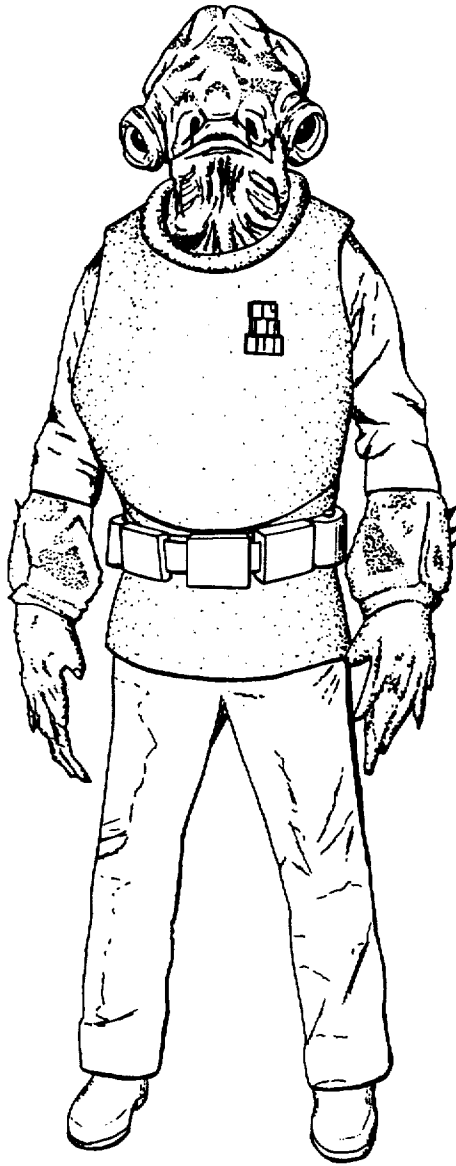


FIG. 2.

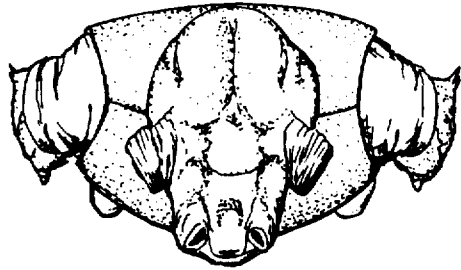


FIG. 1.

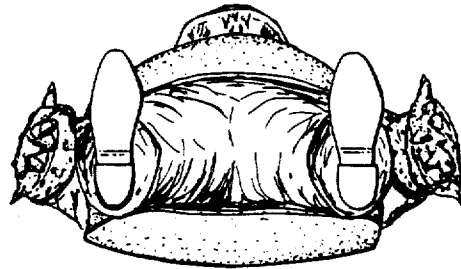


FIG. 5.

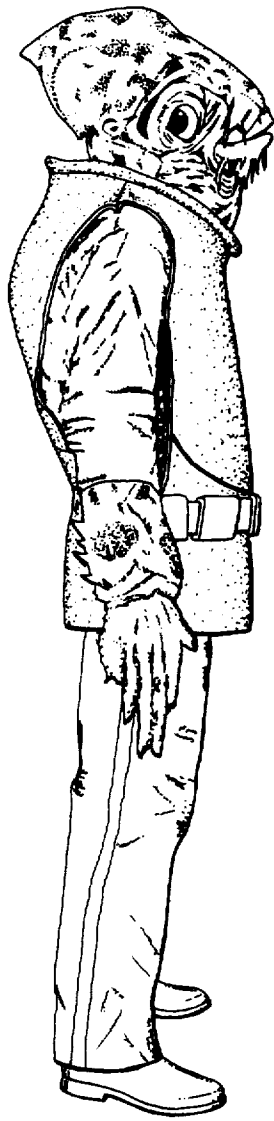


FIG. 3.

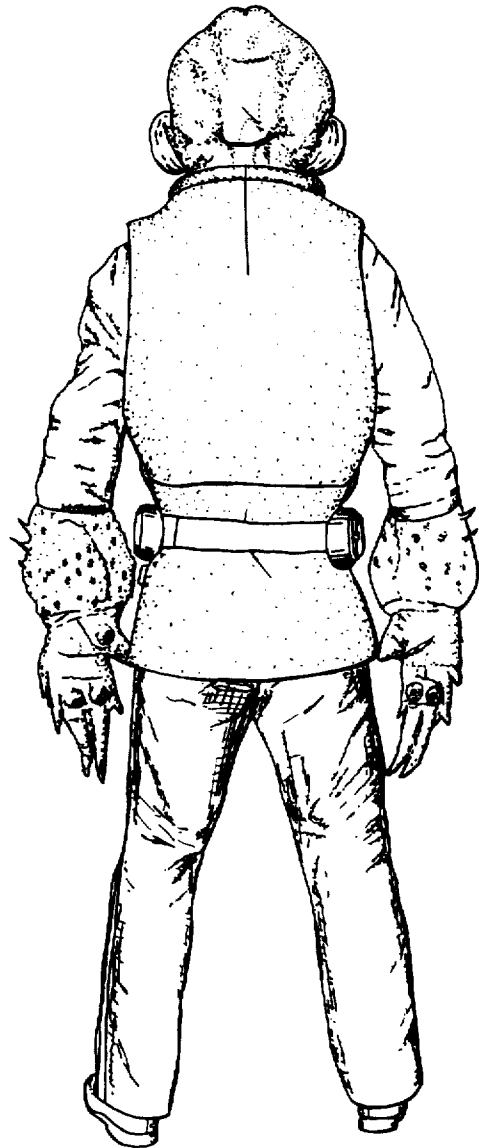


FIG. 4.