



US 20160072878A1

(19) **United States**

(12) **Patent Application Publication**
Papakipos et al.

(10) **Pub. No.: US 2016/0072878 A1**

(43) **Pub. Date: Mar. 10, 2016**

(54) **CALL-TERMINATION-TRIGGERED SOCIAL INTERFACE**

H04L 29/12 (2006.01)

H04W 4/02 (2006.01)

H04W 76/06 (2006.01)

(71) Applicant: **Facebook, Inc.**, Menlo Park, CA (US)

(72) Inventors: **Matthew Nicholas Papakipos**, Portola Valley, CA (US); **David Harry Garcia**, Sunnyvale, CA (US); **Paul Tarjan**, Palo Alto, CA (US)

(52) **U.S. Cl.**

CPC *H04L 67/10* (2013.01); *H04W 4/021* (2013.01); *H04W 76/06* (2013.01); *H04L 61/1594* (2013.01); *H04L 51/32* (2013.01); *H04L 51/046* (2013.01)

(21) Appl. No.: **14/941,974**

(22) Filed: **Nov. 16, 2015**

(57) **ABSTRACT**

Related U.S. Application Data

(63) Continuation of application No. 13/316,209, filed on Dec. 9, 2011, now Pat. No. 9,218,627.

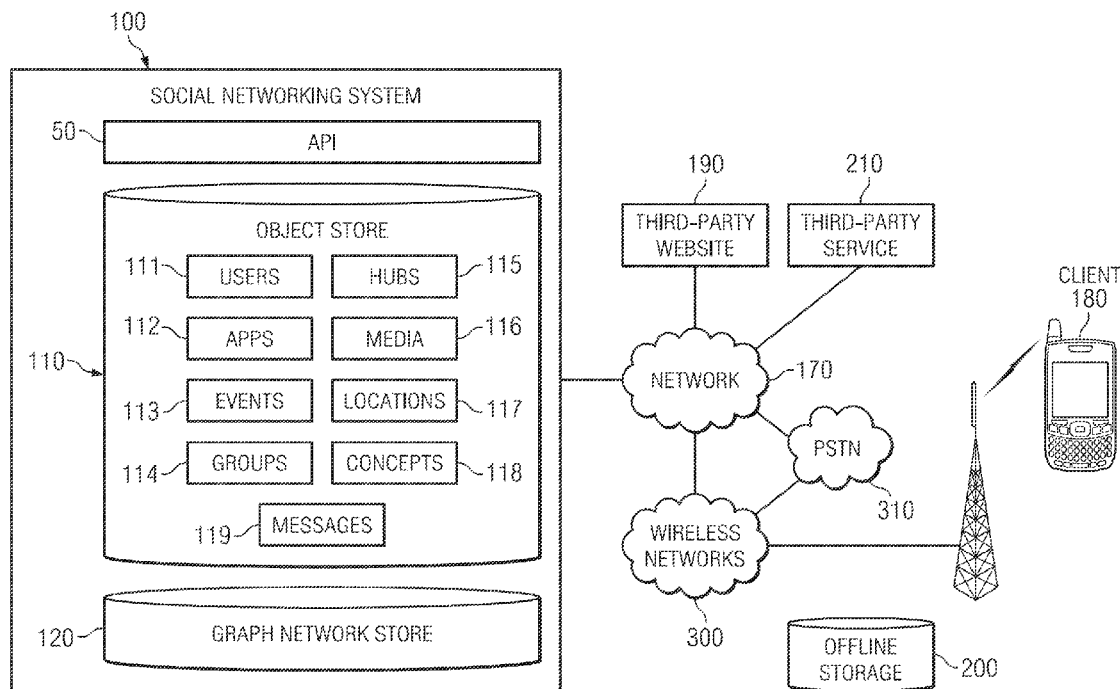
Publication Classification

(51) **Int. Cl.**

H04L 29/08 (2006.01)

H04L 12/58 (2006.01)

Methods and systems directed to a call-termination triggered social interface that leverages information associated with an incoming phone number for display to a user of a mobile device post-call and permits the user to conveniently issue commands to the mobile device or social networking system to take specific actions for the number or entity associated with the number on the social network.



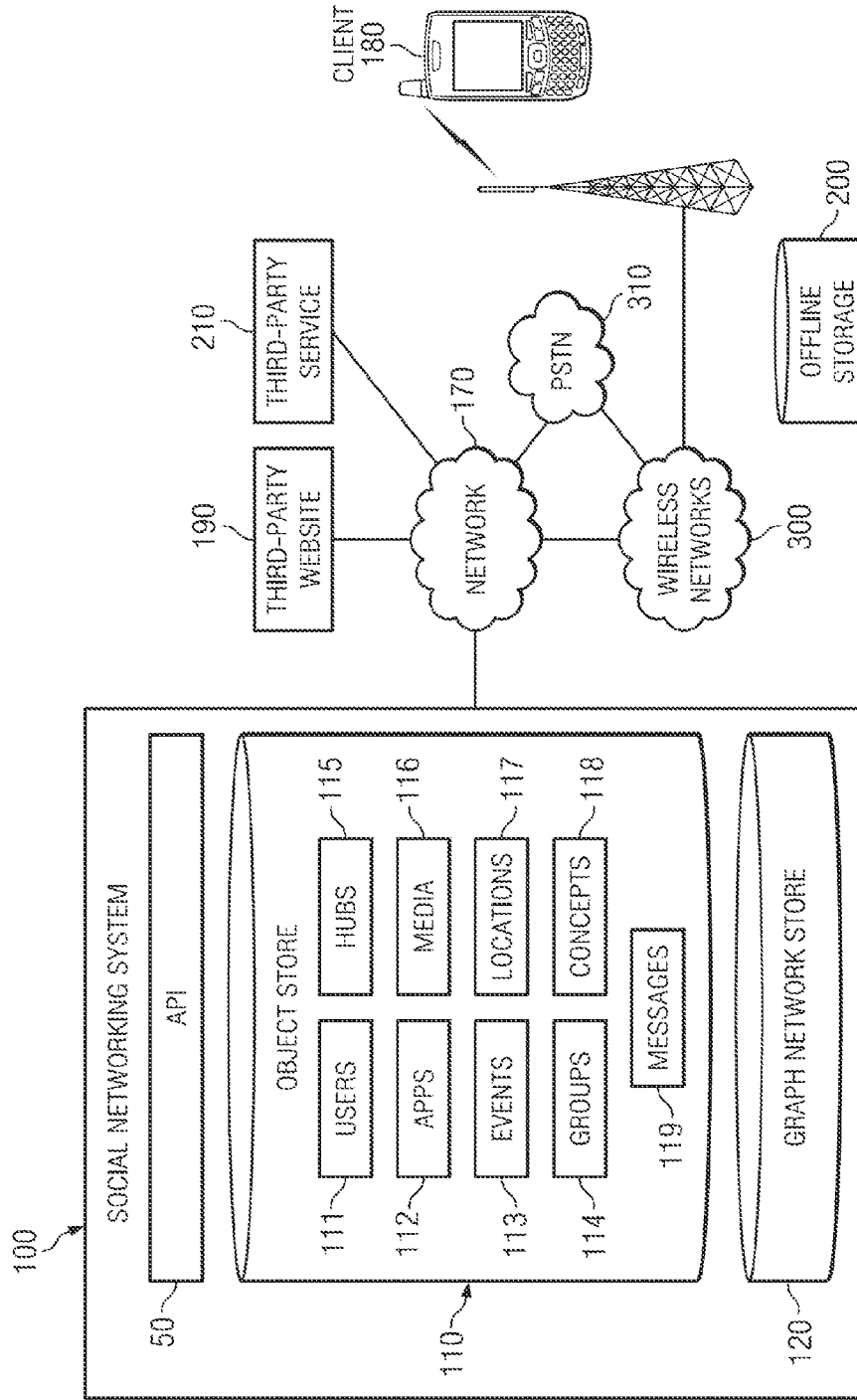


FIG. 1

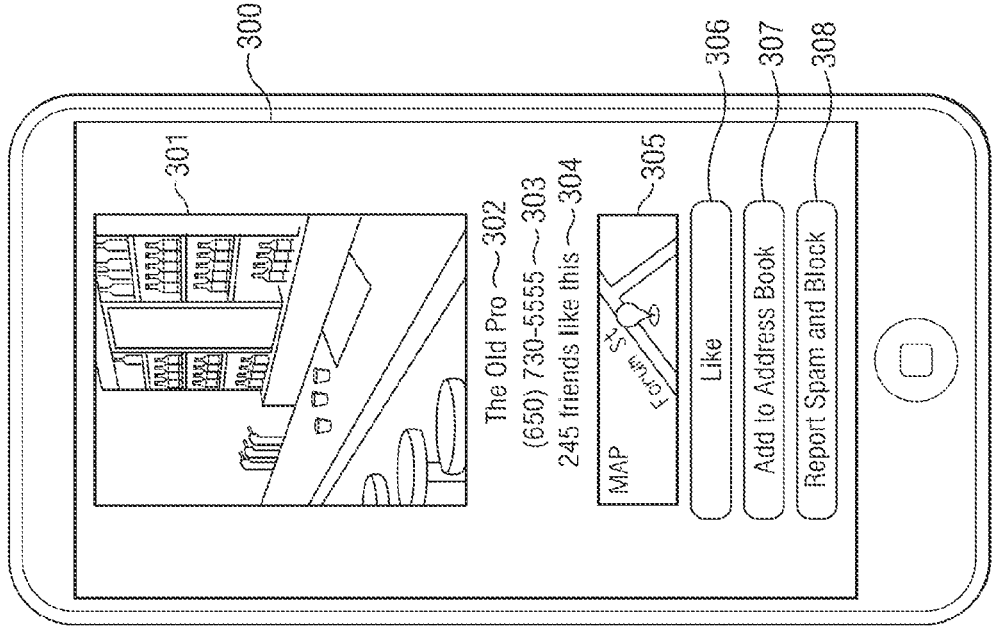


FIG. 2

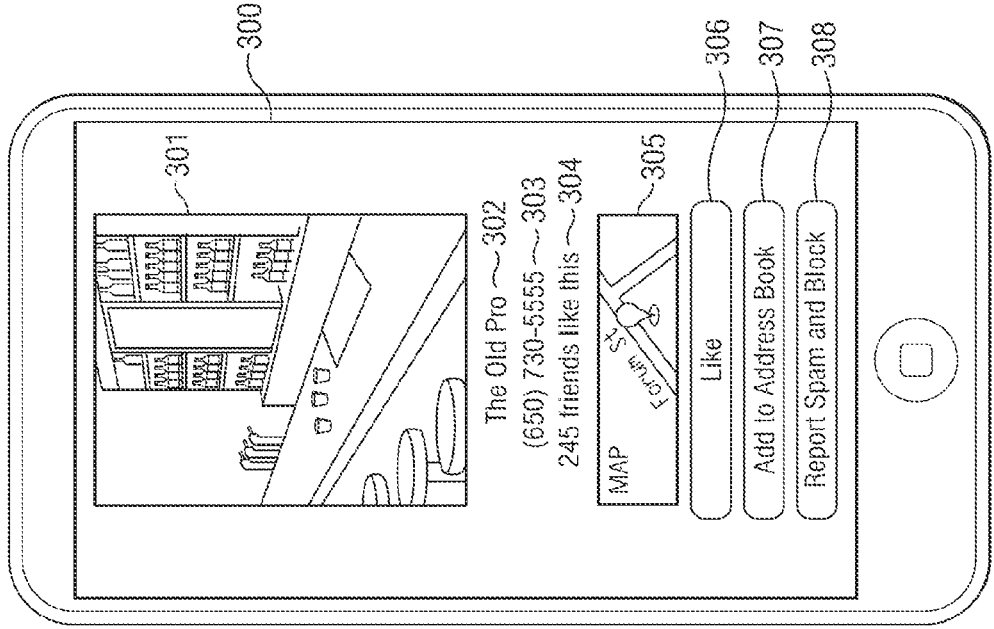


FIG. 3

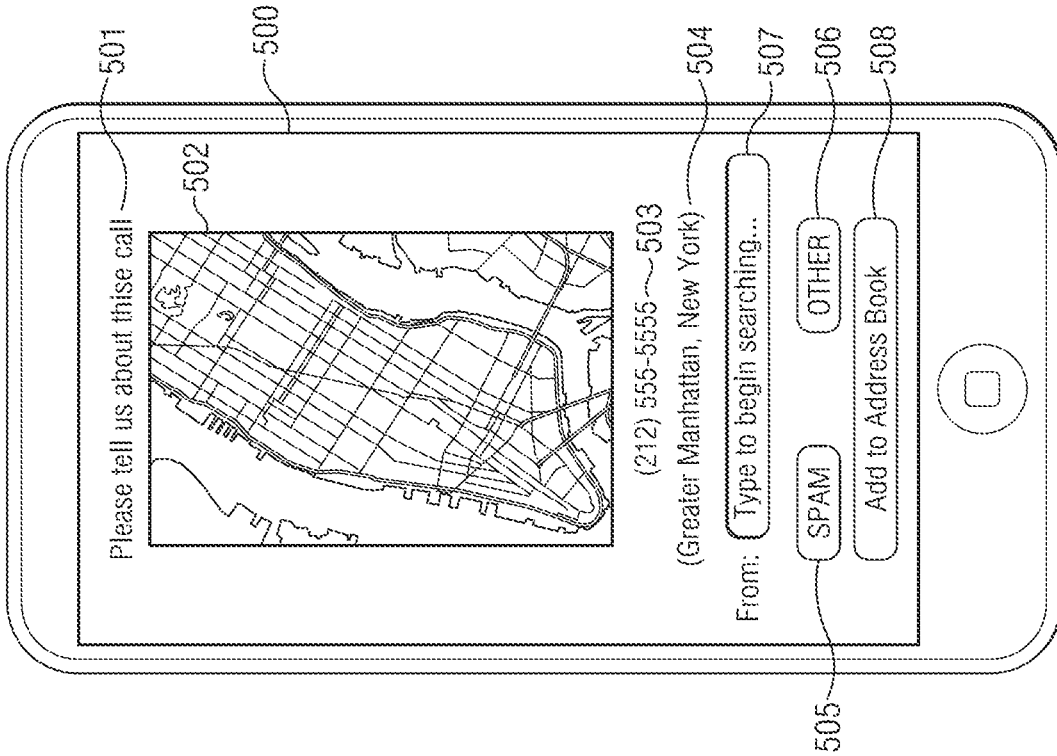


FIG. 4

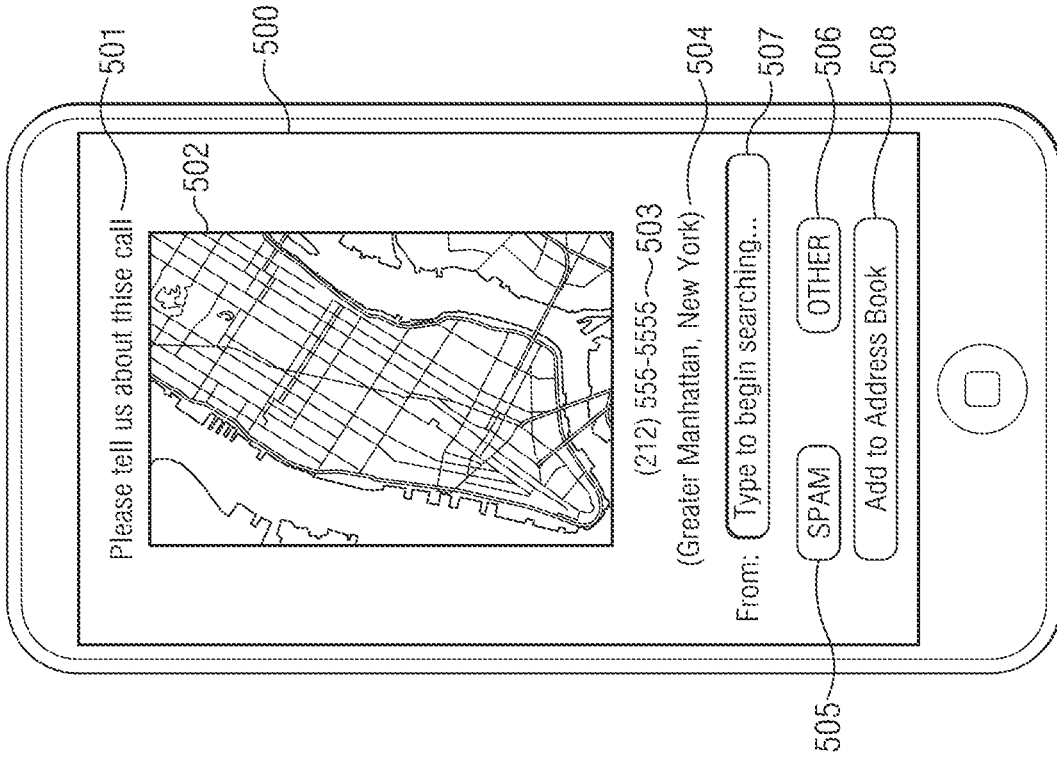


FIG. 5

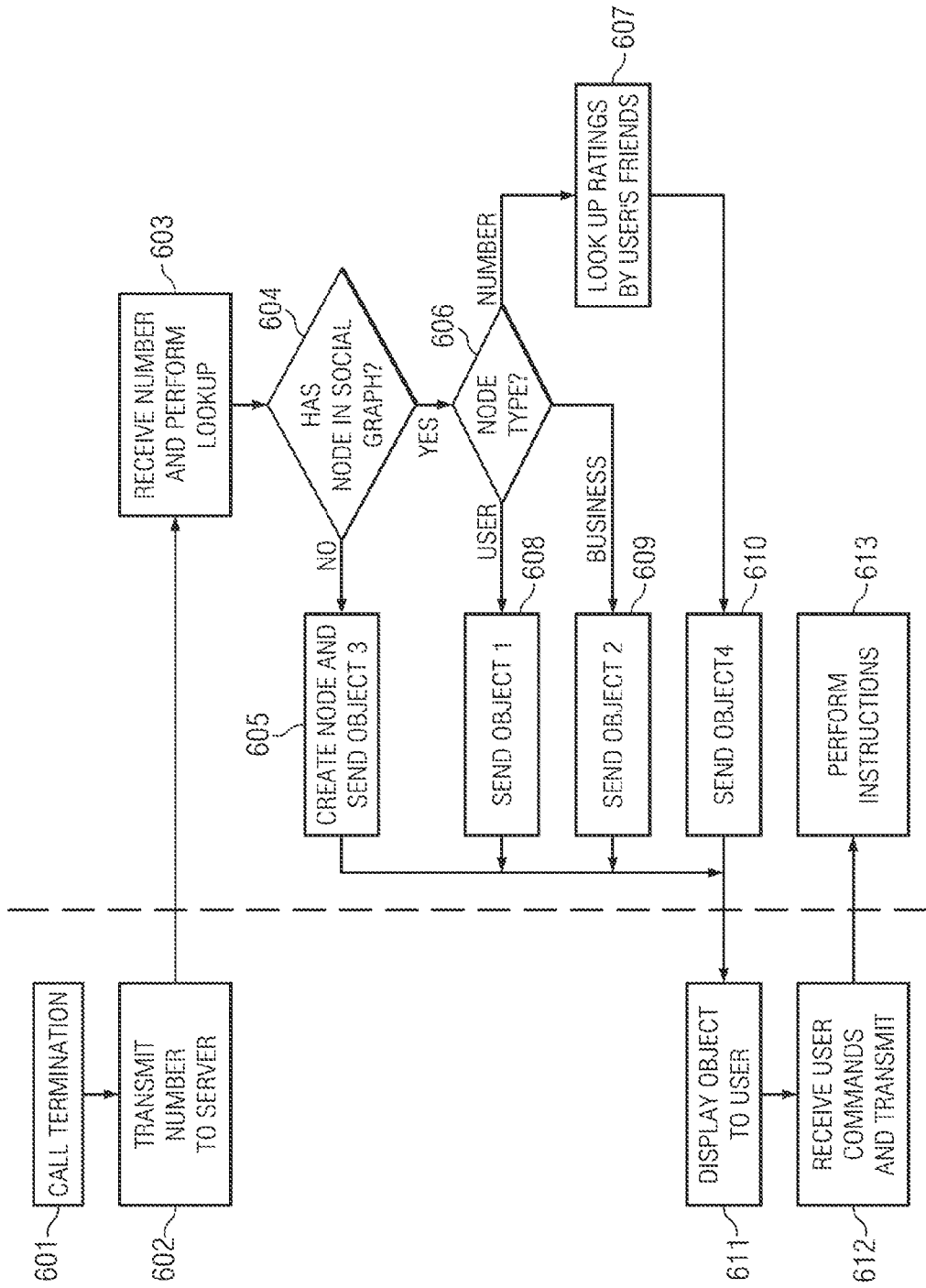


FIG. 6

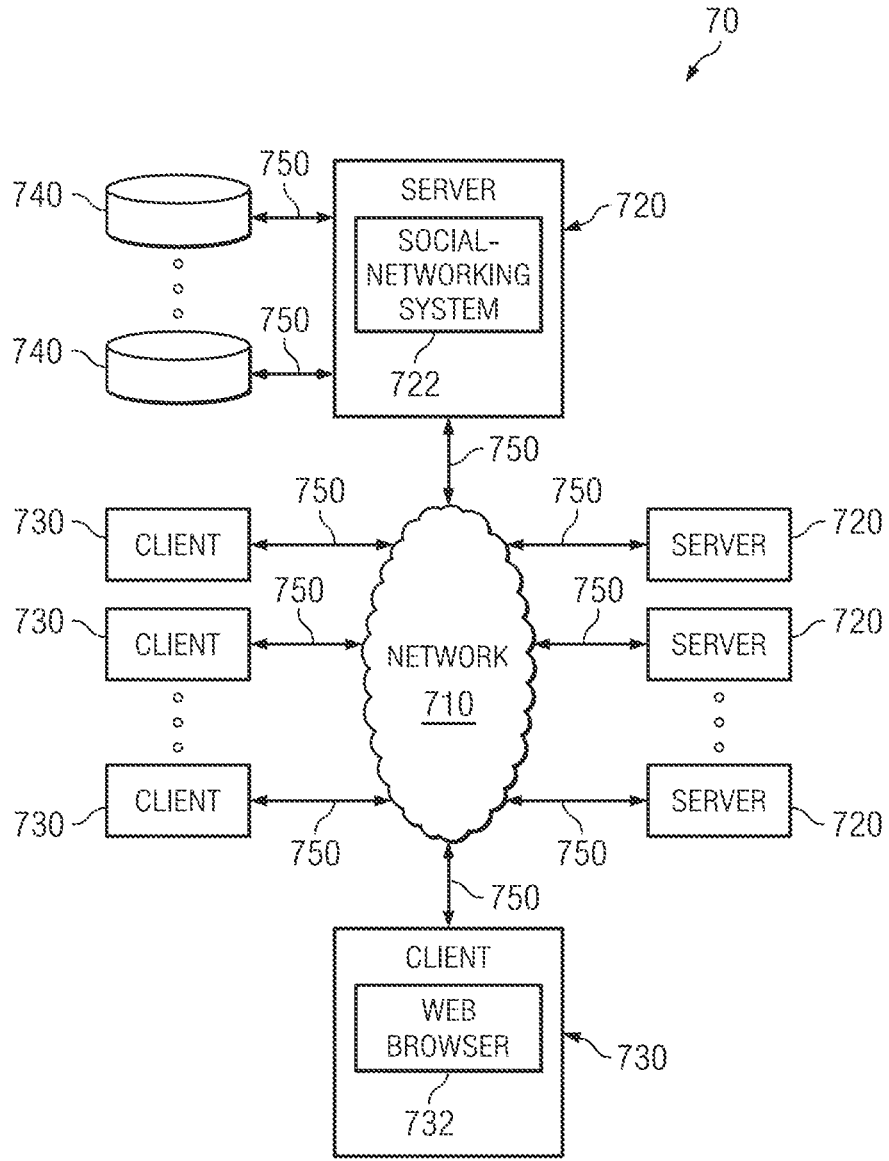


FIG. 7

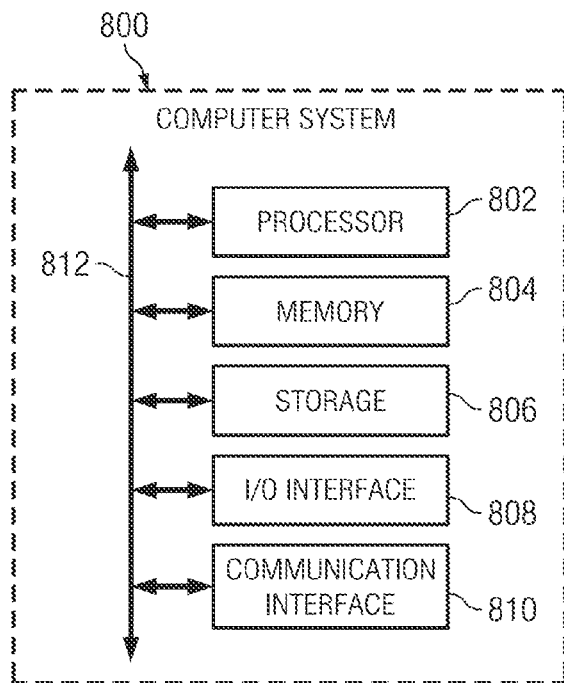


FIG. 8

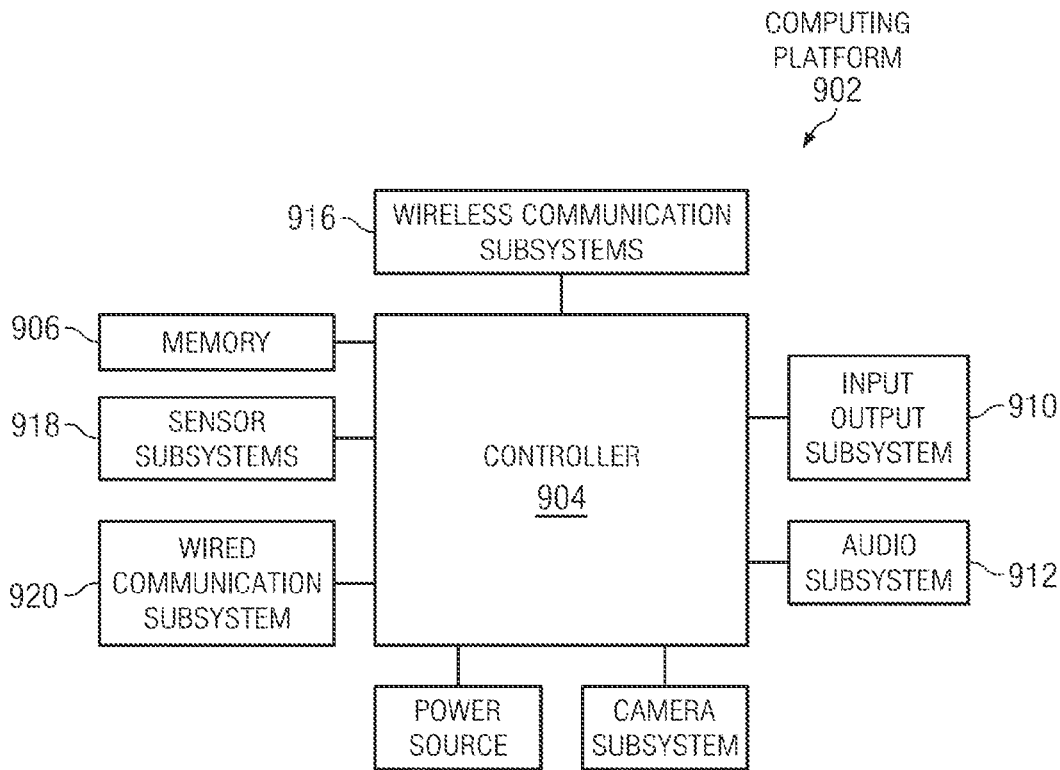


FIG. 9

CALL-TERMINATION-TRIGGERED SOCIAL INTERFACE

PRIORITY

[0001] This application is a continuation under 35 U.S.C. §120 of U.S. patent application Ser. No. 13/316,209, filed 9 Dec. 2011.

TECHNICAL FIELD

[0002] The present disclosure relates generally to a social networking interface triggered by a call-termination event.

BACKGROUND

[0003] The advent of social networking and ubiquitous wireless data networks allows a user of the social network to remotely retrieve an enormous amount of profile data for his or her contacts, or friends, on the social network with little to no latency. Directory service-based caller ID systems may lack access to data that is available on the social networking system, and a user may manually access a dedicated social networking application after a call terminates if he or she wishes to perform on network actions relating to the entity or user associated with the social networking system.

BRIEF DESCRIPTION OF THE DRAWINGS

[0004] FIG. 1 illustrates an example social networking environment.

[0005] FIG. 2 illustrates an example interface implementing a social interface triggered by the termination of a call from a user of the social networking system.

[0006] FIG. 3 illustrates an example interface implementing a social interface triggered by the termination of a call from a business in the social networking system.

[0007] FIG. 4 illustrates an example interface implementing a social interface triggered by the termination of a call with social review information.

[0008] FIG. 5 is an example interface of a call-termination-triggered user interface requesting information about a call.

[0009] FIG. 6 is a flowchart illustrating an example method of transmitting social data to a client device after call termination.

[0010] FIG. 7 illustrates an example network environment

[0011] FIG. 8 illustrates an example computing system.

[0012] FIG. 9 illustrates an example mobile device.

[0013] The figures depict various embodiments of the present invention for purposes of illustration only. One skilled in the art will readily recognize from the following discussion that alternative embodiments of the structures and methods illustrated herein may be employed without departing from the principles of the invention described herein.

DETAILED DESCRIPTION OF EXAMPLE EMBODIMENT(S)

Overview

[0014] Particular embodiments relate to social interface triggered by a call-termination event that pulls profile information from a social networking system and permits the user to quickly perform actions on the social networking system through user-selectable interface elements. In particular embodiments, the social interface may be delivered to the

user as an HTML5 mobile application or web page. In particular embodiments, it may be a separate application.

[0015] Implementations of the present invention extend these concepts by allowing the social networking system may still pull public profile information of incoming callers for display to the user receiving the call. Further, when the incoming number is not associated with any particular user, but a hub page representing a business, the social network may also pull information from the hub page for display to the user. Further, the social networking system may send reviews of the calling entity from the friends of the user on the social networking system, and permit the user to confirm or dispute the review. Finally, where the social networking system has no information about the incoming call, it may request that the user categorize or describe the call for future reference by other members of the social networking system.

[0016] FIG. 1 is a high-level block diagram of an integrated messaging system according to one embodiment. FIG. 1 illustrates a social networking system 100, client device 180, wireless cellular network 300, third-party website 190, third-party communication service 210, and public-switched telephone network 310. It is understood that wireless cellular network 300 represents multiple wireless cellular networks provided by a plurality of carriers. FIG. 1 also includes offline storage 200 that is local to client device 180. Client device 180 is depicted as a mobile phone, but client device 180 may comprise any type of computing device, including mobile phone, laptop, netbook tablet, cable box, television, etc. Client device 180 is any computing device capable of receiving a call, whether it is a VoIP call through a packet-based data network 180, or a voice call from circuit-switched networks such as PSTN 310. Client device 180 has one or more memories capable of storing call, text, and other messaging data, depicted in FIG. 1 as offline storage 200.

[0017] Client device 180 interacts with external websites 190 and other service providers 210 through a web browser residing on the client device, or a dedicated application local to client device 180. For example, client device 180 may interact with third-party instant VoIP service 210, such as Google Voice™ or Skype™, by visiting and logging into their account via a web browser, or by installing and running a dedicated application. The same applies for video calls via third-party service providers 210 such as Apple FaceTime™ or Tango. This disclosure contemplates any type of third-party service provider 210 connected to network 170 or PSTN 300.

[0018] A user of the client device 180 interacts with the social networking system 100 via an application, such as a web browser or a native application, to perform operations such as browsing content, posting and sending messages, retrieving and sorting messages received from other users, and the like. Messages can be in any electronic message format such as electronic mail (“e-mail”) messages, chat messages, comments left on a user’s webpage, and short message service (SMS) text messages. Messages can contain plain text, or they can contain other content such as pictures, videos, and attachments. Each user has a mailbox that includes messages that are both sent and received by the user. Client device 180 may also use an application or browser to pull and view profile information for various user nodes and hubs in social networking system 100.

[0019] Client device 180, connected through wireless network 300, may also interact with other client devices through the circuit-switched, or non-data, portion of wireless network

300. For example, a user at client device **180** may transmit and receive a non-VoIP call to a cellular phone or landline in PSTN **310**, transmit and receive a text or multi-media message through the SMS or MMS channels, or receive push notifications through the SMS control channel.

[0020] Additionally, the third party website **190** can also interact with the social networking system **100** via a system-provided application programming interface (API) **50**. For example, the third party website can perform operations supported by the API, such as delivering messages to the social network system **100**, retrieving messages stored by the social networking system **100**, and obtaining social information about users of the social networking system **100**.

[0021] The social networking system **100** comprises an object store **110**, and a graph information store **120**. The object store **110** stores information on objects, such as users, represented in or by the social networking environment **100**. The graph information store **120** stores information on the relationships of the objects in the object store **110**.

[0022] In particular embodiments, the social graph information includes a first set of user nodes that each correspond to a respective user, and a second set of concept nodes that each correspond to a respective concept. As used herein, a “user” may be an individual (human user), an entity (e.g., an enterprise, business, or third party application), or a group (e.g., of individuals or entities) that interacts or communicates with or over such a social network environment. As used herein, a “concept” may refer to virtually anything that a user may declare or otherwise demonstrate an interest in, a like towards, or a relationship with, such as, by way of example, a sport, a sports team, a genre of music, a musical composer, a hobby, a business (enterprise), an entity, a group, a third party application, a celebrity, a person who is not a registered user, etc. In particular embodiments, each node has, represents, or is represented by, a corresponding web page (“profile page”) hosted or accessible in the social network environment.

[0023] By way of example, a user node may have a corresponding user profile page in which the corresponding user can add content, make declarations, and otherwise express him or herself, while a concept node may have a corresponding concept profile page (“hub”) in which a plurality of users can add content, make declarations, and express themselves, particularly in relation to the concept. In particular embodiments, the social graph information further includes a plurality of edges that each define or represent a connection between a corresponding pair of nodes in the social graph. In particular embodiments, profile information for user nodes is stored in user store **111**, while hub page information for concepts, such as businesses, is stored in hubs store **115**. Nodes directly connected by a friend edge are considered one degree of separation away, and are listed as “friends” on the social network. Users of the social network may specify elements or portions of their profile which may be viewed only by friends, or friends of friends (second degree contacts). In particular embodiments, users may define privacy settings that only allow certain groups or individual members of the social network to view portions of their profile. For further detail on hubs, please see U.S. patent application Ser. No. 12/763,171 titled, “Integrated Social Network Environment,” previously filed on Apr. 19, 2010 and fully incorporated by reference herein.

[0024] FIG. 2 illustrates an example interface displayed to a user when the user’s client (or mobile) device **180** terminates a call from a source associated with one of the user’s

contacts, or friends, on social networking system **100**. Social interface **200** is displayed immediately after call termination. In particular embodiments, social interface **200** is displayed substantially simultaneously with the incoming communication. In particular embodiments, this incoming communication is a voice call, and the communication source is the incoming phone number. In particular embodiments, this communication is a VoIP call, and the communication source is an account (generally a username) for the VoIP service. In particular embodiments, the communication is a video chat, and the communication is an account (usually a username) for the video chat service. In other embodiments, the incoming communication is an e-mail, direct message from a third-party site, instant message, SMS/MMS message, and the like. Although this disclosure primarily pertains to real-time full-duplex communications, all other forms of communication are contemplated.

[0025] Social interface **200** includes a photo **209** of the incoming caller pulled from user store **111**. In particular embodiments, photo **209** is the profile picture for the incoming caller. In particular embodiments, photo **209** is a random photo pulled from the incoming caller’s photos. In particular embodiments, photo **209** is a photo that the incoming caller has been tagged in.

[0026] Social interface **200** also includes the incoming caller’s name **201** and socially relevant data **202-205** that the user may quickly skim when deciding whether perform social actions **206-208**. Socially relevant data **202-205** is anything that may be pertinent to the user that may be pulled from social networking system **100**.

[0027] In particular embodiments, social interface **200** displays the number **202** of the incoming call, as well as the type of number (mobile, home, office etc.). In particular embodiments, social interface **200** displays publicly-posted work information **203**. In particular embodiments, social interface **200** displays publicly-posted current city of residence **204**. In particular embodiments, the social networking system queries a socially graph to determine the number of mutual first-degree connections between the user node associated with the client device and the user node associated with the incoming phone number. In such embodiments, social interface **200** displays the number of mutual friends to the user.

[0028] In particular embodiments, privacy information is respected by the application generating social interface **200**. For example, if the caller has put the user on a limited profile that does not allow the user to see his current city, that setting will be respected and not displayed to the user. The only information that is displayed to the called user is information the calling user has made public.

[0029] Social interface **200** also includes social actions **206-208**. In particular embodiments, social interface **200** includes an “add to friends” button **206**, which, when selected by a user, transmits an instruction to social networking system **100** to transmit a friend request on the social network to the calling user from the called user. Thus the user may quickly add a calling party as a friend on the social network; traditionally, the user would be required to open a separate social networking application or navigate to the social networking web page from their mobile browser, search for the user’s name (if known), and manually send a friend request to the calling user.

[0030] In particular embodiments, social interface **200** includes an “add to address book” button **207**. In particular embodiments, the address book is locally maintained on cli-

ent device **180**, and the relevant information from social interface **200**, such as profile picture **209** and social information **201-204**, may be automatically added into client **180**'s address book stored in local memory. In particular embodiments, social networking system **100** may store an address book or phone book for the user associated with client device **180** on its own servers. In such embodiments, social networking system may add relevant information as well as a link to the calling party's social networking profile page in the called member's server-side address book. In particular embodiments, button **207** may import the calling party data to both a local and server-side address book. In particular embodiments, button **207** may cause client device **180** to export a vcard to Outlook or another contact management application. This disclosure contemplates any suitable manner of adding calling party information to an address book, as well as any suitable storage location for the called member's address book.

[0031] In particular embodiments, social interface **200** includes a "report spam and block" button **208**, which, when actuated, transmits an instruction to social network **100** identifying the calling party as spam or telemarketing. In particular embodiments, social networking system **100** adds the called user's review to database of reviews for the calling number. In particular embodiments, button **208** causes client device **180** to apply a policy so as to no longer ring when receiving a call from the incoming telephone number **202**. This disclosure contemplates any suitable action buttons **206-208**, whether the actions are performed on social networking system **100**, locally on client device **180**, or a mixture of the two.

[0032] FIG. 3 illustrates an example social interface **300** when client device **180** receives a call from a number that is associated with a concept node page, or "hub." As briefly described above, non-user entities may maintain nodes on social networking system **100**, and each non-user entity may also have a profile page, also known as a "hub." In particular embodiments, all the information on hub pages is public, and is entered into the hub page by the administrator of the concept node associated with the hub.

[0033] Social interface **300** includes a picture **301** of the business or node owner. In particular embodiments, picture **301** is the profile picture for the hub. In particular embodiments, social interface **300** includes the name of the business **302** or hub owner (in this case, "The Old Pro") and its phone number **303**. In particular embodiments, social interface **300** also includes socially relevant data, such as, for example, the number of friends of the user who have "liked" the hub **304**, or the number of friends who have or are currently checked-in to the hub. Additionally, in particular embodiments, a map **305** to the business or location associated with the hub may be displayed. In particular embodiments, the address of the business may be displayed in lieu or in addition to a map. In particular embodiments, this map is selectable and can provide a link to navigation instructions or other actions by client device **180**.

[0034] Social interface **300** may include action buttons **306-308** in a similar manner as described with reference to FIG. 2. In particular embodiments, social interface **300** may include a "like" button **306**. In response to a user selecting "like" button **306**, mobile device **180** transmits an instruction to social networking system **100**, which then generates a "like" edge in the social graph between the node associated with mobile device **180** and the node representing the busi-

ness on the social networking system. In particular embodiments, this is reflected on both the user's profile page as well as the business's hub page. In particular embodiments, social networking system **100** utilizes an open graph protocol that permits any business to define actions a user may take. In particular embodiments, social interface **300** may include buttons permitting any action that is permitted on the business's hub page.

[0035] In particular embodiments, social interface **300** includes an "add to address book" button **307**. In particular embodiments, the address book is locally maintained on client device **180**, and the relevant information from social interface **300**, such as profile picture **301** and social information **302-304**, may be automatically added into client **180**'s address book stored in local memory. In particular embodiments, social networking system **100** may store an address book or phone book for the user associated with client device **180** on its own servers. In such embodiments, social networking system may add relevant information as well as a link to the calling party's social networking profile page in the called member's server-side address book. In particular embodiments, button **307** may import the calling party data to both a local and server-side address book. In particular embodiments, button **307** may cause client device **180** to export a vcard to Outlook or another contact management application. This disclosure contemplates any suitable manner of adding calling party information to an address book, as well as any suitable storage location for the called member's address book.

[0036] In particular embodiments, social interface **300** includes a "report spam and block" button **308**, which, when actuated, transmits an instruction to social network **100** identifying the calling party as spam or telemarketing. In particular embodiments, social networking system **100** adds the called user's review to database of reviews for the calling number. In particular embodiments, button **308** causes client device **180** to apply a policy so as to no longer ring when receiving a call from the incoming telephone number **302**. This disclosure contemplates any suitable action buttons **306-308**, whether the actions are performed on social networking system **100**, locally on client device **180**, or a mixture of the two.

[0037] FIG. 4 illustrates an example social interface **400** displayed to a user after the termination of a call originating from a number that has been marked as spam or telemarketing by one or more friends of the called party on the social networking system. Social interface **400** includes a message **402** that states the number of the called user's friends on social networking system **100** that have marked the number as spam or telemarketing. In particular embodiments, message **402** also includes the entity from which the spam or telemarketing originated, in this example, "Comcast." In particular embodiments, social interface **400** includes the profile pictures **401a-401f** of the called user's friends who have flagged the number as spam. In particular embodiments, profile pictures **401a-401f** are arranged chronologically by the most recent flagging user. In particular embodiments, profile pictures **401a-401f** are arranged in order of social coefficient, with the users that social networking system **100** has determined are closer to the called user displayed first. In particular embodiments, social interface **400** includes a "see more" element **401g** that allows a user of mobile device **180** to see more profile photos for users who have flagged the call as spam or telemarketing.

[0038] Social interface **400** includes a confirm button **403** (“yes”) or a dispute button **404** (“no”), that allows the user of mobile device **180** to confirm that the incoming call was telemarketing or spam, or, in particular embodiments, that the telemarketing/spam was attributed to the correct entity. Alternatively, the user of mobile device may select “No” button **404** to inform social networking system **100** that the call was not spam/telemarketing or that it was improperly attributed.

[0039] FIG. 5 illustrates an example social interface **500** requesting more information about the terminated call from the called party. In particular embodiments, social networking system **100** delivers social interface **500** to mobile device **180** after it cannot match the calling party’s number to any node in the social graph. For example, if the calling party’s number is not associated with any user, business, or if the social networking system has not previously received feedback on the number, the number is considered “new” to social networking system **100**, and social networking system **180** displays social interface **500** to the user of mobile device **180**. Alternatively, social interface **500** may be displayed on mobile device **180** when the user seeks to correct information contained in social interface **400**. For example, if a user receives a call, and, upon termination of the call, receives social interface **400** stating that 14 of his or her friends have marked the call as “spam” from Comcast, the user may dispute the ratings of his friends by pressing “no” button, at which mobile device **180** subsequently displays social interface **500**.

[0040] Social interface **500** includes a prompt **501** that requests that the user of mobile device **180** provide information regarding the previously terminated call. In particular embodiments, social networking system performs a reverse-lookup based on the area code of the calling number **503**, and displays a map **502** of the area code in social interface **500**. In particular embodiments, social interface **500** provides a description **504** of the geographic area associated with the area code of incoming number **503**. This disclosure contemplates the inclusion of any other information that may be deduced from publicly available databases based on incoming number **503** in social interface **500**.

[0041] Social interface **500** may, in particular embodiments, include “Spam” button **505** and “other” button **506** that, when actuated, transmit information back to social networking system **100** to flag the incoming number as a spam call or non-spam call, respectively. Upon receiving the flag, social networking system may, for a new number, create a node associated with the number and mark it in accordance with user instruction, or update an existing node in the social graph.

[0042] In particular embodiments, social interface **500** may include a search bar **507** that allows a user to type and search for concept nodes or businesses to attribute the incoming call to. For example, the user may seek to correct an attribution from “Comcast” to “AT&T” by typing “AT&T” in search bar **507**, selecting AT&T from a drop-down menu, and selecting spam button **505**. In particular embodiments, search bar **507** utilizes a typeahead feature that employs real-time search. For example, as the user begins typing, each character is transmitted to social networking system and searched against a database of concept nodes substantially in real time.

[0043] In particular embodiments, social interface **500** includes an “add to address book” button **508**, as previously described with respect to FIGS. 2 and 3.

[0044] FIG. 6 illustrates an example method of providing a call-termination-triggered social interface to a mobile device in accordance with one embodiment of the invention. At Step **601**, an incoming call is terminated, either through user action or through calling party action. In particular embodiments, where mobile device **180** is capable of simultaneous voice and data connection, the triggering event may be the reception of an incoming call, so that social interface is already delivered to the user for nearly instantaneous display at the end of the call. In particular embodiments, social interface works in conjunction with a social caller ID application that pulls data from the social networking system in substantially real-time as incoming calls. For further description of a social caller ID application, please see commonly-owned U.S. patent application Ser. No. 13/214,940, entitled “Social Caller ID with Reverse Lookup”, filed on 22 Aug. 2011 and fully incorporated by reference herein.

[0045] At Step **602**, mobile device **180** transmits the number of the incoming call to the social networking system. In particular embodiments, mobile device **180** may transmit other information, such as a social networking system identifier for the user account associated with mobile device **180**, to social networking system **100**. In particular embodiments, the social networking system recognizes mobile device **180**’s MAC address, phone number, IMEI, IP address, or other identifier to associate mobile device **180** with a social networking user ID. This disclosure contemplates any suitable method of associating mobile device **180** with a social networking ID. Regardless of the method, the social networking system recognizes the incoming transmission as a transmission from a device associated with a particular user node in the social graph.

[0046] At Step **603**, social networking system **100** receives the phone number or other identifier of the incoming call/communication, and performs a reverse lookup for any nodes in the social graph that are associated with the number. In particular embodiments, a node may be associated with a number with or without express permission by the node administrator. For example, if user A adds a number to his or her phone book for user B, the social networking system may, in particular embodiments, associate the phone number entered in user A’s phone book with user B, even if user B has not added the number to his or her profile page. As another example, multiple users may submit that a particular 800 number is associated with the node for Continental Airlines. Social networking system **100** may, in particular embodiments, associate the number with the Continental Airlines node even if Continental does not add the number to its hub page. In particular embodiments, social networking system **100** may crawl third-party telephone directories such as gethuman.com to associate phone numbers with concept nodes in the social graph.

[0047] At Step **605**, if social networking system **100** cannot find an associated node for the incoming number, it creates a node for the incoming number in the social graph. For example, even if the number is entirely new to social networking system **100**, the system will still store a record of the call and phone number, in the hopes that eventually a node will either explicitly claim ownership of the number, or another user will associate the number with a particular user or concept node. After creating a temporary node for the incoming phone number, social networking system **100** transmits an object containing social interface **500** to mobile device **180**. In particular embodiments, an application on client **180** main-

tains the resources necessary to render social interface **500**, and social networking system **100** merely transmits a command to mobile device **180**'s application. In particular embodiments, social networking system transmits an HTML5 web page to mobile device **180**, and mobile device **180** renders social interface **500** via its browser. In particular embodiments, client device transmits a JSON object containing JavaScript code and rendering assets for client device **180** to render and display to the user. This disclosure contemplates any suitable method of generating social interfaces for display on mobile device **180**.

[0048] At Step **606**, if social networking system **100** determines that a node exists in the social graph that is associated with the received incoming phone number, social networking system **100** transmits an object based on the type of node associated with the number. In Step **608**, if the node associated with the number is a user node, social networking system **100** transmits an object containing social interface **200**. Similarly, if the node associated with a phone number is a business or concept node, social networking system **100** transmits an object containing social interface **300**.

[0049] Finally, if the number is associated only with a temporary node, such as for the "new" node generated in Step **605**, social networking system **100** at Step **607** first looks for any ratings attached to the node, such as spam or telemarketing flags made by the first-degree connections of the user. In particular embodiments, social networking system searches for ratings from any user, not just the called user's first-degree connections. In particular embodiments, where there are conflicting ratings, social networking system **100** weights the called user's friend's ratings more heavily. In particular embodiments, social networking system **100** weights the called user's friends based on a social coefficient representing the degree of closeness between the called user and his or her friends. After pulling the required data, social networking system transmits an object containing social interface **400** to mobile device **180**.

[0050] At Step **611**, mobile device **180** displays one of social interfaces **200-500** to the user, and awaits input from the user. In particular embodiments, social interfaces **200-500** provide a selectable option to exit the social interfaces when the user cannot be bothered with filling out call information. In particular embodiments, clicking the exit option still permits the user to return to the social interfaces for later use, for example, from a call log application. In particular embodiments, mobile device **180** transmits call log data to social networking system **100**, and the user may enter information about each call through social interfaces **200-500** on mobile device **180**, or alternatively, at a later point through the social networking system's web site.

[0051] After receiving one or more inputs at Step **612**, mobile device **180** translates user inputs into instructions and transmits them back to social networking system **100**. At Step **613** social networking system **100** performs one or more actions as described above in accordance with the instructions. In particular embodiments, social networking system **100** may transmit additional social interfaces as follow up questions. For example, user receiving social interface **400** at Step **608** may respond that the ratings were not correct by actuating "no" button **404**. In particular embodiments, social networking system **100** may, in response, transmit an object containing social interface **500** to mobile device **180**. The user may then enter a concept node identifier through search bar **507**, and social networking system **100** may associate the

temporary node for the incoming number to the identified concept node in response. As previously discussed, this disclosure contemplates any combination of actions performed on social networking system **100**, whether alone or in conjunction with local actions performed on mobile device **180**.

[0052] While the foregoing embodiments may be implemented in a variety of network configurations, the following illustrates an example network environment for didactic, and not limiting, purposes. FIG. 7 illustrates an example network environment **700**. Network environment **700** includes a network **710** coupling one or more servers **720** and one or more clients **730** to each other. Network environment **700** also includes one or more data storage **740** linked to one or more servers **720**. Particular embodiments may be implemented in network environment **700**. For example, a social networking system frontend may be written in software programs hosted by one or more servers **720**. For example, event database **102** may be stored in one or more storage **740**. In particular embodiments, network **710** is an intranet, an extranet, a virtual private network (VPN), a local area network (LAN), a wireless LAN (WLAN), a wide area network (WAN), a metropolitan area network (MAN), a portion of the Internet, or another network **710** or a combination of two or more such networks **710**. The present disclosure contemplates any suitable network **710**. One or more links **750** couple a server **720** or a client **730** to network **710**. In particular embodiments, one or more links **750** each includes one or more wired, wireless, or optical links **750** or networks.

[0053] In particular embodiments, each server **720** may be a unitary server or may be a distributed server spanning multiple computers or multiple datacenters. Servers **720** may be of various types, such as, for example and without limitation, web server, news server, mail server, message server, advertising server, file server, application server, exchange server, database server, or proxy server. In particular embodiments, each server **720** may include hardware, software, or embedded logic components or a combination of two or more such components for carrying out the appropriate functionalities implemented or supported by server **720**.

[0054] In particular embodiments, one or more data storages **740** may be communicatively linked to one or more servers **720** via one or more links **750**. In particular embodiment, each data storage **740** may be a relational database. Particular embodiments may provide interfaces that enable servers **720** or clients **730** to manage, e.g., retrieve, modify, add, or delete, the information stored in data storage **740**.

[0055] In particular embodiments, each client **730** may be an electronic device including hardware, software, or embedded logic components or a combination of two or more such components and capable of carrying out the appropriate functions implemented or supported by client **730**. For example and without limitation, a client **730** may be a desktop computer system, a notebook computer system, a netbook computer system, a handheld electronic device, or a mobile telephone. The present disclosure contemplates any suitable clients **730**. A client **730** may enable a network user at client **730** to access network **710**. A client **730** may enable its user to communicate with other users at other clients **730**.

[0056] A client **730** may have a web browser **732**, and may have one or more add-ons, plug-ins, or other extensions. A user at client **730** may enter a Uniform Resource Locator (URL) or other address directing the web browser **732** to a server **720**, and the web browser **732** may generate a Hyper Text Transfer Protocol (HTTP) request and communicate the

HTTP request to server 720. Server 720 may accept the HTTP request and communicate to client 730 one or more Hyper Text Markup Language (HTML) files responsive to the HTTP request. Client 730 may render a web page based on the HTML files from server 720 for presentation to the user. The present disclosure contemplates any suitable web page files. Herein, reference to a web page encompasses one or more corresponding web page files (which a browser may use to render the web page) and vice versa, where appropriate.

[0057] FIG. 8 illustrates an example computer system 800, which may be used with some embodiments of the present invention. This disclosure contemplates any suitable number of computer systems 800. This disclosure contemplates computer system 800 taking any suitable physical form. As example and not by way of limitation, computer system 800 may be an embedded computer system, a system-on-chip (SOC), a single-board computer system (SBC) (such as, for example, a computer-on-module (COM) or system-on-module (SOM)), a desktop computer system, a laptop or notebook computer system, an interactive kiosk, a mainframe, a mesh of computer systems, a mobile telephone, a personal digital assistant (PDA), a server, or a combination of two or more of these. Where appropriate, computer system 800 may include one or more computer systems 800; be unitary or distributed; span multiple locations; span multiple machines; or reside in a cloud, which may include one or more cloud components in one or more networks. Where appropriate, one or more computer systems 800 may perform without substantial spatial or temporal limitation one or more steps of one or more methods described or illustrated herein.

[0058] In particular embodiments, computer system 800 includes a processor 802, memory 804, storage 806, an input/output (I/O) interface 808, a communication interface 810, and a bus 812. Although this disclosure describes and illustrates a particular computer system having a particular number of particular components in a particular arrangement, this disclosure contemplates any suitable computer system having any suitable number of any suitable components in any suitable arrangement.

[0059] In particular embodiments, processor 802 includes hardware for executing instructions, such as those making up a computer program. As an example and not by way of limitation, to execute instructions, processor 802 may retrieve (or fetch) the instructions from an internal register, an internal cache, memory 804, or storage 806; decode and execute them; and then write one or more results to an internal register, an internal cache, memory 804, or storage 806. Although this disclosure describes and illustrates a particular processor, this disclosure contemplates any suitable processor.

[0060] In particular embodiments, memory 804 includes main memory for storing instructions for processor 802 to execute or data for processor 802 to operate on. As an example and not by way of limitation, computer system 800 may load instructions from storage 806 or another source (such as, for example, another computer system 800) to memory 804. One or more memory buses (which may each include an address bus and a data bus) may couple processor 802 to memory 804. Bus 812 may include one or more memory buses, as described below. Although this disclosure describes and illustrates particular memory, this disclosure contemplates any suitable memory.

[0061] In particular embodiments, storage 806 includes mass storage for data or instructions. As an example and not by way of limitation, storage 806 may include an HDD, a

flash memory, an optical disc, a magneto-optical disc, magnetic tape, or a Universal Serial Bus (USB) drive or a combination of two or more of these. Storage 806 may include removable or non-removable (or fixed) media, where appropriate. Storage 806 may be internal or external to computer system 800, where appropriate. This disclosure contemplates mass storage 806 taking any suitable physical form. Where appropriate, storage 806 may include one or more storages 806. Although this disclosure describes and illustrates particular storage, this disclosure contemplates any suitable storage.

[0062] In particular embodiments, I/O interface 808 includes hardware, software, or both providing one or more interfaces for communication between computer system 800 and one or more I/O devices. One or more of these I/O devices may enable communication between a person and computer system 800. This disclosure contemplates any suitable I/O devices and any suitable I/O interfaces 808 for them. Although this disclosure describes and illustrates a particular I/O interface, this disclosure contemplates any suitable I/O interface.

[0063] In particular embodiments, communication interface 810 includes hardware, software, or both providing one or more interfaces for communication (such as, for example, packet-based communication) between computer system 800 and one or more other computer systems 800 or one or more networks. This disclosure contemplates any suitable network and any suitable communication interface 810 for it. Although this disclosure describes and illustrates a particular communication interface, this disclosure contemplates any suitable communication interface.

[0064] In particular embodiments, bus 812 includes hardware, software, or both coupling components of computer system 800 to each other. Although this disclosure describes and illustrates a particular bus, this disclosure contemplates any suitable bus or interconnect.

[0065] The client-side functionality described above can be implemented as a series of instructions stored on a computer-readable storage medium that, when executed, cause a programmable processor to implement the operations described above.

[0066] While client device 180 may be implemented in a variety of different hardware and computing systems, FIG. 9 shows a schematic representation of the main components of an example computing platform 902, according to various particular embodiments. Multipoint sensing devices generally include a controller 904 which may comprise a microcontroller or one or more processors configured to execute instructions and to carry out operations associated with a computing platform. Controller 904 may optionally contain a cache memory unit for temporary local storage of instructions, data, or computer addresses. By way of example, using instructions retrieved from memory, controller 904 may control the reception and manipulation of input and output data between components of computing platform 902.

[0067] Controller 904 together with a suitable operating system may operate to execute instructions in the form of computer code and produce and use data. The operating system, other computer code (including control client 908 described below) and/or data may be physically stored within a memory block 906 that is operatively coupled to controller 904.

[0068] Memory block 906 encompasses one or more storage media and generally provides a place to store computer

code (e.g., software and/or firmware) and data that are used by the computing platform 902. Memory block 906 may include one or more fixed storage devices in the form of, by way of example, solid-state hard disk drives (HDDs), among other suitable forms of memory coupled bi-directionally to controller 904. Information may also reside on a removable storage medium loaded into or installed in multipoint sensing devices when needed. By way of example, any of a number of suitable memory cards may be loaded into computing platform 902 on a temporary or permanent basis.

[0069] Controller 904 is also generally coupled to a variety of interfaces such as graphics control, video interface, input interface, output interface, and storage interface, and network interface, and these interfaces in turn are coupled to the appropriate devices. In certain embodiments, Controller 904 may be connected to an input structure 914 and display 916 may be provided together, such as in the case of a touchscreen where a touch sensitive mechanism is provided in conjunction with the display 916.

[0070] Electric signals (e.g., analog) may be produced by microphone 910 and fed to earpiece 912. Controller 904 may receive instruction signals from input structure 914 and control the operation of display 916. Audio signals may be transmitted and received by means of an antenna 918 that may be connected through a radio interface 920 or audio input interface such as microphone 924 to codec 922 configured to process signals under control of controller 904. Additionally, multipoint sensing devices may be powered power source 932.

[0071] Mobile device may also include one or more user input devices 934 (other than input structure 914) that are operatively coupled to the controller 904. Generally, input devices 934 are configured to transfer data, commands and responses from the outside world into multipoint sensing devices.

[0072] Display device 916 is generally configured to display a graphical user interface (GUI) that provides an easy to use visual interface between a user of the computing platform 902 and the operating system or application(s) running on the mobile device.

[0073] Herein, reference to a computer-readable non-transitory storage medium may include a semiconductor-based or other integrated circuit (IC) (such as, for example, a field-programmable gate array (FPGA) or an application-specific IC (ASIC)), a hard disk, an HDD, a hybrid hard drive (HHD), an optical disc, an optical disc drive (ODD), a magneto-optical disc, a magneto-optical drive, a floppy disk, a floppy disk drive (FDD), magnetic tape, a holographic storage medium, a solid-state drive (SSD), a RAM-drive, a SECURE DIGITAL card, a SECURE DIGITAL drive, another suitable computer-readable non-transitory storage medium, or a suitable combination of these, where appropriate. A computer-readable non-transitory storage medium may be volatile, non-volatile, or a combination of volatile and non-volatile, where appropriate.

[0074] The present disclosure encompasses all changes, substitutions, variations, alterations, and modifications to the example embodiments herein that a person having ordinary skill in the art would comprehend. Similarly, where appropriate, the appended claims encompass all changes, substitutions, variations, alterations, and modifications to the example embodiments herein that a person having ordinary skill in the art would comprehend.

[0075] The foregoing description of the embodiments of the invention has been presented for the purpose of illustration; it is not intended to be exhaustive or to limit the invention to the precise forms disclosed. Persons skilled in the relevant art can appreciate that many modifications and variations are possible in light of the above disclosure. For example, although the foregoing embodiments have been described in the context of a social network system, it will appear to one of ordinary skill in the art that the invention may be used with any electronic social network service and, even if it is not provided through a website. The invention is thus not limited to any particular type of communication system, network, protocol, format or application.

[0076] Some portions of this description describe the embodiments of the invention in terms of algorithms and symbolic representations of operations on information. These algorithmic descriptions and representations are commonly used by those skilled in the data processing arts to convey the substance of their work effectively to others skilled in the art. These operations, while described functionally, computationally, or logically, are understood to be implemented by computer programs or equivalent electrical circuits, microcode, or the like. Furthermore, it has also proven convenient at times, to refer to these arrangements of operations as modules, without loss of generality. The described operations and their associated modules may be embodied in software, firmware, hardware, or any combinations thereof.

[0077] Any of the steps, operations, or processes described herein may be performed or implemented with one or more hardware or software modules, alone or in combination with other devices.

[0078] Embodiments of the invention may also relate to an apparatus for performing the operations herein. This apparatus may be specially constructed for the required purposes, and/or it may comprise a general-purpose computing device selectively activated or reconfigured by a computer program stored in the computer. Such a computer program may be stored in a tangible computer readable storage medium or any type of media suitable for storing electronic instructions, and coupled to a computer system bus. Furthermore, any computing systems referred to in the specification may include a single processor or may be architectures employing multiple processor designs for increased computing capability.

[0079] While the foregoing processes and mechanisms can be implemented by a wide variety of physical systems and in a wide variety of network and computing environments, the server or computing systems described below provide example computing system architectures for didactic, rather than limiting, purposes.

[0080] Finally, the language used in the specification has been principally selected for readability and instructional purposes, and it may not have been selected to delineate or circumscribe the inventive subject matter. It is therefore intended that the scope of the invention be limited not by this detailed description, but rather by any claims that issue on an application based hereon. Accordingly, the disclosure of the embodiments of the invention is intended to be illustrative, but not limiting, of the scope of the invention, which is set forth in the following claims.

What is claimed is:

1. A method comprising, by one or more computing devices:
determining whether a source of a communication to a client device is associated with any of a plurality of

existing nodes in a social graph of a social network, the client device being associated with a first user; and in response to determining that the source is not associated with any of the existing nodes:

sending to the client device an object comprising one or more user-selectable elements, wherein one of the user-selectable elements comprises an input field for accepting a user input for attributing the source to an entity;

receiving the user input from the client device; and based at least in part on the user input, creating a new node corresponding to an entity to which the source is attributed.

2. The method of claim 1, wherein the object sent to the client device further comprises a map of a geographic area determined to be associated with the source.

3. The method of claim 1, wherein the object sent to the client device further comprises a description of a geographic area determined to be associated with the source.

4. The method of claim 1, wherein the object sent to the client device further comprises information associated with the source, the information being deduced from publicly available databases.

5. The method of claim 1, wherein the first user is a user of the social network, the first user being associated with a first node of the social network.

6. The method of claim 5, further comprising:
receiving an instruction from the client device in response to an input selecting another one of the user-selectable elements; and
in response to the instruction, adding an entry for the source in an address book associated with the first node.

7. The method of claim 5, further comprising:
receiving an instruction from the client device transmitted in response to an input selecting another one of the first user-selectable elements; and
in response to the instruction, transmitting a friend request from the first node to the new node.

8. The method of claim 5, further comprising:
receiving an instruction from the client device transmitted in response to an input selecting another one of the user-selectable elements; and
in response to the instruction, creating, on the social graph, a "like" edge between the first node and the new node.

9. The method of claim 1, further comprising:
receiving an instruction from the client device transmitted in response to an input selecting another one of the first user-selectable elements; and
in response to the instruction, flagging the new node attributed to the source as a spam source.

10. The method of claim 1, further comprising, if the user input corresponds to an existing node, updating the existing node by attributing the source to the existing node.

11. The method of claim 1, further comprising, if the user input corresponds to an existing node:

receiving an instruction from the client device transmitted in response to a user of the client device selecting another one of the first user-selectable elements; and based at least in part on the instruction, confirming or disputing a rating associated with the existing node.

12. The method of claim 1, wherein the input field comprises a search field that enables the first user to search for entities to which the communication can be attributed.

13. The method of claim 1, wherein the communication is a voice call

14. The method of claim 1, wherein the communication is a video chat.

15. The method of claim 1, wherein the communication is an e-mail, a direct message from a third-party site, an instant message, or an SMS/MMS message.

16. The method of claim 1, wherein the entity is a business.

17. The method of claim 1, wherein the entity is a person.

18. One or more computer-readable non-transitory storage media embodying software that is operable when executed to:
determine whether a source of a communication to a client device is associated with any of a plurality of existing nodes in a social graph of a social network, the client device being associated with a first user; and
in response to determining that the source is not associated with any of the existing nodes:

send to the client device an object comprising one or more user-selectable elements, wherein one of the user-selectable elements comprises an input field for accepting a user input for attributing the source to an entity;

receive the user input from the client device; and based at least in part on the user input, create a new node corresponding to an entity to which the source is attributed.

19. The media of claim 18, wherein the input field comprises a search field that enables the first user to search for entities to which the communication can be attributed.

20. A system comprising: one or more processors; and a memory coupled to the processors comprising instructions executable by the processors, the processors being operable when executing the instructions to:

determine whether a source of a communication to a client device is associated with any of a plurality of existing nodes in a social graph of a social network, the client device being associated with a first user; and

in response to determining that the source is not associated with any of the existing nodes:

send to the client device an object comprising one or more user-selectable elements, wherein one of the user-selectable elements comprises an input field for accepting a user input for attributing the source to an entity;

receive the user input from the client device; and based at least in part on the user input, create a new node corresponding to an entity to which the source is attributed.

* * * * *