

(19) **United States**

(12) **Patent Application Publication**  
**Crawford et al.**

(10) **Pub. No.: US 2016/0161266 A1**

(43) **Pub. Date: Jun. 9, 2016**

(54) **VEHICLE PASSENGER IDENTIFICATION**

**Publication Classification**

(71) Applicant: **FORD GLOBAL TECHNOLOGIES, LLC**, Dearborn, MI (US)

(51) **Int. Cl.**  
**G01C 21/34** (2006.01)  
**G01S 17/89** (2006.01)

(72) Inventors: **Mark Crawford**, Belleville, MI (US);  
**James Robert McBride**, Saline, MI (US);  
**Shane Elwart**, Ypsilanti, MI (US);  
**Schuyler Cohen**, Ann Arbor, MI (US)

(52) **U.S. Cl.**  
 CPC ..... **G01C 21/34** (2013.01); **G01S 17/89** (2013.01)

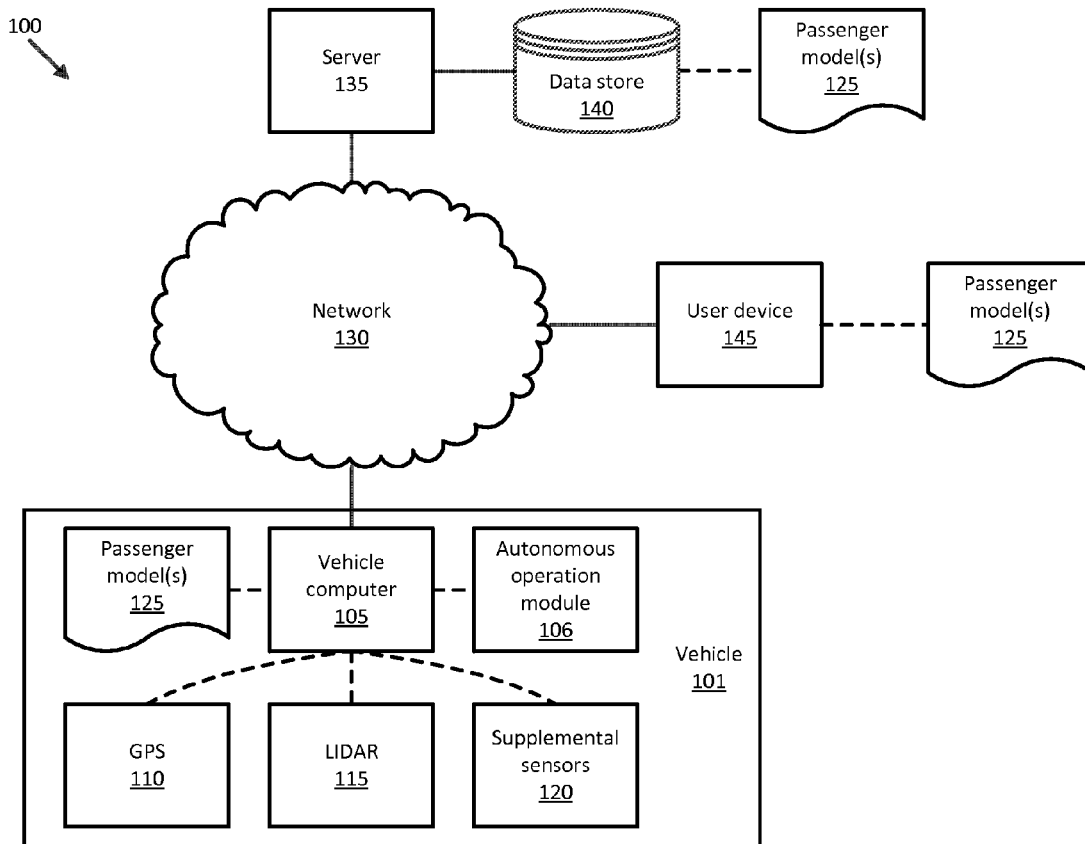
(73) Assignee: **FORD GLOBAL TECHNOLOGIES, LLC**, Dearborn, MI (US)

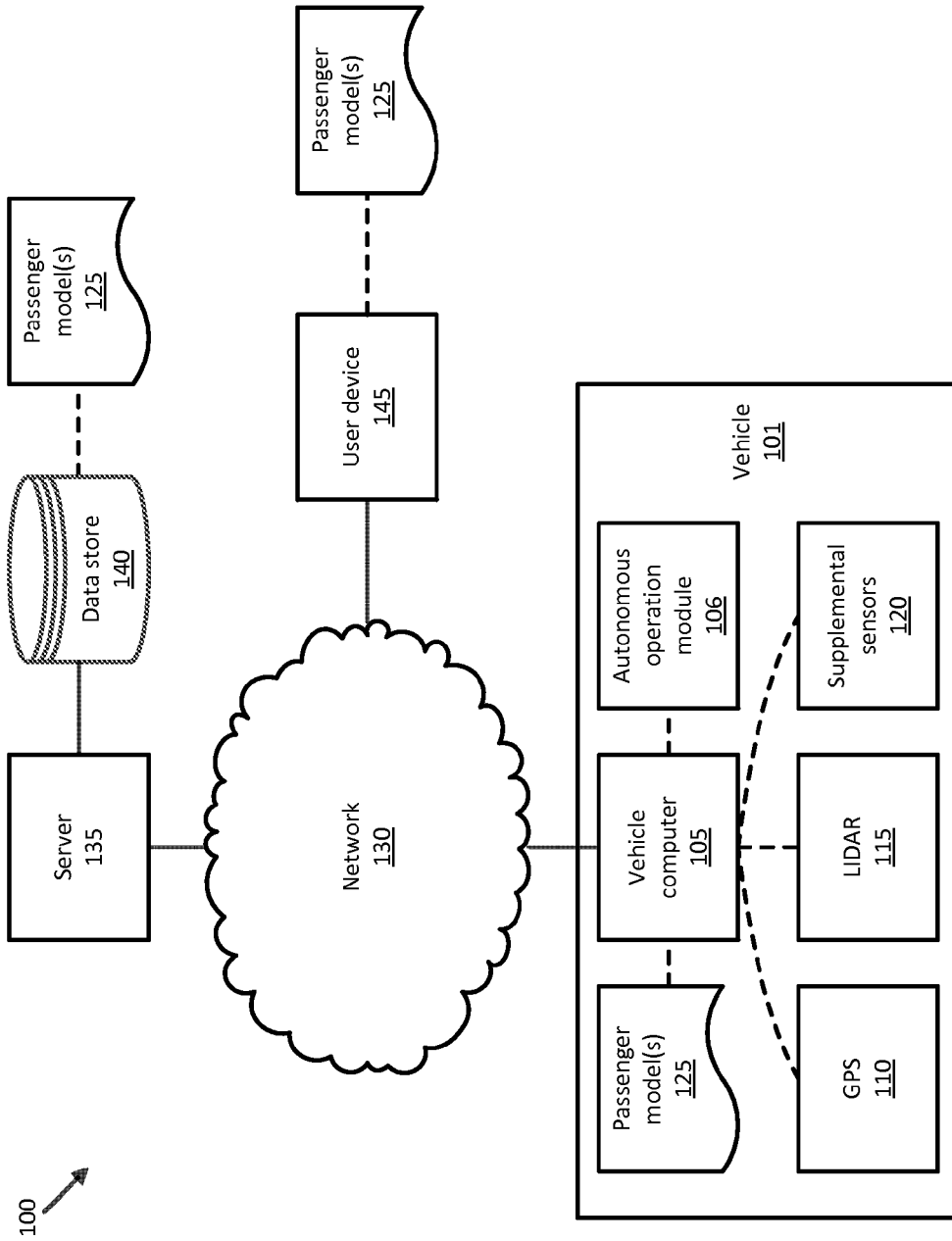
(57) **ABSTRACT**

At least one first model represents a person. A request to pick up a passenger includes a first location and a personal identifier for the passenger. A vehicle is caused to navigate to the first location. The passenger is identified by comparing a second model generated from vehicle sensor data with the first model.

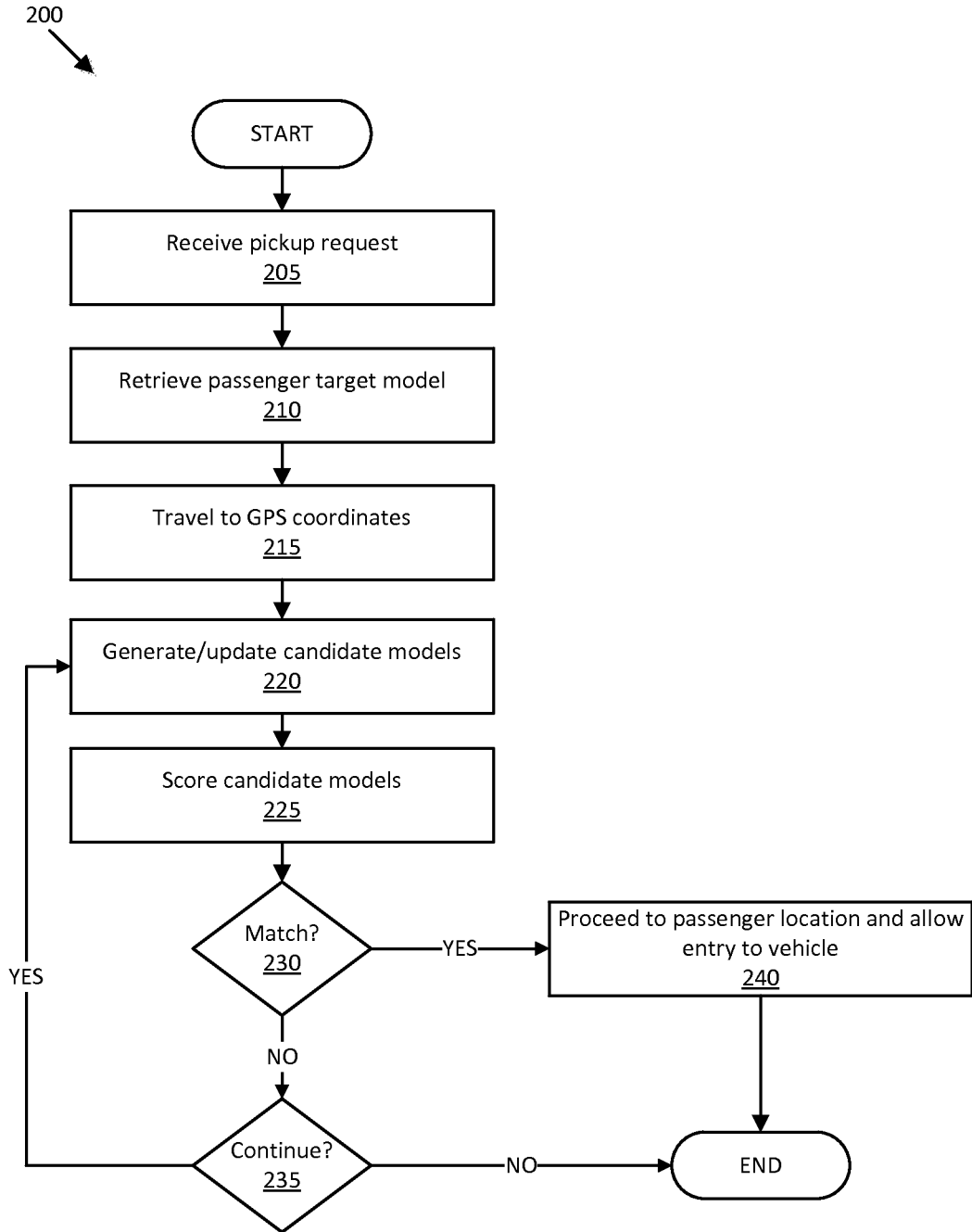
(21) Appl. No.: **14/559,136**

(22) Filed: **Dec. 3, 2014**





**FIG. 1**



**FIG. 2**

## VEHICLE PASSENGER IDENTIFICATION

### BACKGROUND

[0001] A vehicle such as an autonomous vehicle, a taxi or livery vehicle, etc., may be requested to pick up a passenger on demand. For example, a passenger using a communication device (e.g. smartphone) could request pickup at his/her current location by sending GPS (global positioning system) coordinates to the vehicle or a driver of the vehicle. The vehicle could then navigate to the GPS coordinates. A problem arises, however, in that, upon arrival at specified GPS coordinates, it may be difficult to identify a location of the target passenger with sufficient precision to actually pick the passenger up due to inaccuracies and/or imprecision provided GPS coordinates. Errors resulting from using GPS data can cause a vehicle to stop at a location separated from an actual location of a target passenger by as much as several meters, on a wrong side of a street or in a wrong driveway, etc.

### DRAWINGS

[0002] FIG. 1 is a block diagram of an example system for vehicle passenger identification and/or location.

[0003] FIG. 2 is a diagram of an example process for identifying and/or locating a vehicle passenger.

### DETAILED DESCRIPTION

#### System Overview

[0004] FIG. 1 is a block diagram of an example system for vehicle passenger identification and/or location. A vehicle 101 computer 105 is programmed to receive inputs, e.g., from a remote user device 140, indicating global positioning system (GPS) coordinates of a passenger to be picked up by the vehicle. A vehicle 101 GPS 110 that is included in or communicatively coupled to the computer 105 generates a route to the provided GPS coordinates. Upon arriving at the specified GPS coordinates, the computer 105 receives data from one or more lidar sensors 115, and possibly also from one or more cameras or other supplemental sensors 120. The computer 105 then compares the sensor data with one or more personal models 125 representing respective potential passengers for the vehicle 101. The personal models 125 may be stored in a memory of the computer 105 and/or provides from a data store 140 associated with a remote server 135 and/or the user device 145. In any event, when a potential passenger is identified within a predetermined confidence range, e.g., from 90-100%, the vehicle 101 navigates to a location of the passenger 101 with a degree of precision that may be an order of magnitude higher than a degree of precision possible using GPS data alone.

#### System Elements

[0005] A vehicle 101 computer 105 generally includes a processor and a memory, the memory including one or more forms of computer-readable media, and storing instructions executable by the processor for performing various operations, including as disclosed herein. The memory of the computer 105 may further store one or more personal models 125, which may be generated in a manner described herein below. The memory of the computer 105 also generally receives and stores data from sensors such as lidar 115 and possibly also supplemental sensors 120. In addition, the memory of the computer 105 may store various data, including data relating

to a vehicle 101 location provided by the GPS 110, and other data collected from vehicle 101 controllers, sensors, etc.

[0006] Accordingly, the computer 105 is generally configured for communications on a bus such as an Ethernet bus, a controller area network (CAN) bus or the like, and/or may use other wired or wireless protocols, e.g., Bluetooth, etc. That is, the computer 105 can communicate via various mechanisms that may be provided in the vehicle 101 and/or other devices such as a user device 145. The computer 105 may also have a connection to an onboard diagnostics connector (OBD-II) port, e.g., according to the J1962 standard. Via the Ethernet bus, CAN bus, OBD-II connector port, and/or other wired or wireless mechanisms, the computer 105 may transmit messages to various devices in a vehicle and/or receive messages from the various devices, e.g., controllers, actuators, sensors, etc. In addition, the computer 105 may be configured for communicating, e.g., with one or more remote servers 135, e.g., via a network 130, which, as described below, may include various wired and/or wireless networking technologies, e.g., cellular, Bluetooth, wired and/or wireless packet networks, etc.

[0007] Generally included in instructions stored in and executed by the computer 105 is an autonomous driving module 106. Using data received in the computer 105, e.g., from various sensors, from a vehicle 101 communications bus, from the server 135, etc., the module 106 may control various vehicle 101 components and/or operations without a driver to operate the vehicle 101 autonomously or semi-autonomously (i.e., control some but not all vehicle 101 operations). For example, the module 106 may be used to regulate vehicle 101 speed, acceleration, deceleration, steering, gear shifts, operation of components such as lights, windshield wipers, etc.

[0008] A variety of sensors and other sources may provide data for autonomous or semi-autonomous operation of the vehicle 101, as just mentioned. For example, various controllers in a 101 vehicle may provide data via a controller area network (CAN) bus, e.g., data relating to vehicle speed, acceleration, etc. Further, sensors or the like, GPS 110, etc., could be included in a vehicle to provide data to the computer 105, e.g., via a wired or wireless connection. Sensors could include mechanisms such as RADAR, lidar 115, cameras or the like, sonar, motion detectors, etc. In addition, sensors could be included in the vehicle 101 to detect a position, change in position, rate of change in position, etc., of vehicle 101 components such as a steering wheel, brake pedal, accelerator, gearshift lever, etc.

[0009] The navigation system, e.g., global positioning system (GPS), 110, is generally known for a variety of operations. These include using GPS satellites to determine geo-coordinates, i.e., latitude and longitude, of a vehicle 101. The GPS 110 may also receive input, e.g., geo-coordinates, a street address or the like, etc. of a location of a target passenger. Such input may alternatively or additionally be provided to the computer 105 from a user device 145, e.g., via the network 130. Further, the autonomous module 106 could use information from the GPS 110 and/or a user device 145 to generate a route to be followed to an intended destination.

[0010] Lidar 115 includes one or more lidar sensors. As is known, lidar 115 can be used to generate three-dimensional data concerning a shape and/or position of an object. As is also known, lidar sensors 115 are also capable of providing surface reflectivity measurements. Such reflectivity information could be used in a model 125, and for comparison to a model 125.

[0011] Supplemental sensors **120** include one or more image sensors, e.g. cameras. The supplemental sensors **120** may be used in conjunction with lidar **115** to provide data to be compared to a personal model **125**. Supplemental sensors **120** could include other kinds of sensors, e.g., ultrasonic sensors or the like, used to locate an object.

[0012] Personal model **125** includes a representation of a person, e.g., a potential vehicle passenger, using various data, such as lidar and/or image data. The model **125** and thus provides a set of data for comparison to data from lidar **115** and possibly also sensors **120** such as image sensors in a vehicle **101**. That is, lidar **115** and possibly also image sensor **120** data relating to a person standing at or near a vehicle pickup location could be provided to the computer **105**, and compared to a personal model **125** stored in a memory of the computer **105**. If the comparison indicates a match within a predetermined degree of confidence, e.g., 90 percent confidence or higher, then, as described further below, the vehicle **101** may navigate to a location very near, e.g., within one meter, three meters, etc., e.g., as close as possible permitted by safety considerations, road and/or sidewalk configurations, etc.

[0013] A personal model **125** may be created according to a data gathering process in which a person sits and/or stands at a one or more specified locations with respect to, lidar **115** and possibly also sensors **120**, e.g., a specified distance from a vehicle **101**, and then is scanned by lidar **115** and possibly also sensors **120**. Further, in addition to being scanned at more than one location, e.g., distance, relative to the vehicle **101** and its sensors **115**, **120**, a person may also be scanned at various orientations, e.g., sitting, standing, in profile, frontally, rearwardly, etc. Thus, a model **125** may include representations of a particular person at one or more distances from a vehicle **101** and in one or more orientations and/or at one or more angles.

[0014] Note that a personal model **125** may be stored in a memory of the vehicle computer **105**. For example, a scanning process such as described above may be used to generate a personal model **125** in the computer **105**, whereupon it is stored in the memory of the computer **105**. Alternatively or additionally, a personal model **125** could be created using sensors **115**, **120**, etc. not located in the vehicle **101**, e.g., located in a lab or testing center, etc. The personal model **125** could then be stored in a user device **145** and/or in a data store **140** associated with the remote server **135**. Then, when a pickup request, discussed below with respect to the process **200**, was made from a user device **145** for a particular passenger, a personal model **125** could be provided to the computer **105** from the user device **145** and/or the data store **140**.

[0015] The network **130** represents one or more mechanisms by which a vehicle **101** computer **105** may communicate with a remote server **135**. Accordingly, the network **130** may be one or more of various wired or wireless communication mechanisms, including any desired combination of wired (e.g., cable and fiber) and/or wireless (e.g., cellular, wireless, satellite, microwave, and radio frequency) communication mechanisms and any desired network topology (or topologies when multiple communication mechanisms are utilized). Exemplary communication networks include wireless communication networks (e.g., using Bluetooth, IEEE 802.11, etc.), local area networks (LAN) and/or wide area networks (WAN), including the Internet, providing data communication services.

[0016] The server **135** may be one or more computer servers, each generally including at least one processor and at least one memory, the memory storing instructions executable by the processor, including instructions for carrying out various of the steps and processes described herein. The server **135** includes or is communicatively coupled to a data store **140** for storing data including one or more personal models **125**.

[0017] A user device **145** may be any one of a variety of computing devices including a processor and a memory, as well as communication capabilities. For example, the user device **145** may be a portable computer, tablet computer, a smart phone, etc. that includes capabilities for wireless communications using IEEE 802.11, Bluetooth, and/or cellular communications protocols. Further, the user device **145** may use such communications capabilities to communicate via the network **130** and also directly with a vehicle computer **105**, e.g., using an in-vehicle communications mechanism, e.g., Bluetooth.

#### Process

[0018] FIG. 2 is a diagram of an example process **200** for identifying and/or locating a vehicle passenger. The process **200** begins in a block **205**, in which the vehicle computer **105** receives a passenger pickup request. For example, a user device **145** could be used to send a pickup request to the vehicle computer **105** via the network **130**. The user device **145**, as part of such request, could specify GPS coordinates to the vehicle computer **105**. Further, the request generally includes an identifier for a passenger to be picked up, that is, a personal identifier associated with a particular person, and may also include personal model **125** data, e.g., from the memory of a device **145** used to make the request. In any case, the model retrieved and/or stored as described in this block **210** is sometimes referred to as the “target model **125**.” That is, the target model **125** provides a model of lidar and possibly also other data, e.g., image data, of a passenger to be picked up.

[0019] Next, in a block **210**, the computer **105** retrieves a personal model **125** associated with the pickup request. That is, the identifier for the passenger to be picked up provided in the pickup request could be used to retrieve a model **125** from the memory of the computer **105** and/or from the server **135** and data store **140**. Moreover, as mentioned above, a model **125** may alternatively or additionally be provided from a memory of the device **145**.

[0020] In the next block, a block **215**, the autonomous module **106** navigates the vehicle **101** to the GPS coordinates specified in the request of the block **205**. For example, the autonomous module **106** may use a route generation algorithm or the like such as is known to determine a route to the specified GPS coordinates, and may then navigate the vehicle **101** to such coordinates.

[0021] Next, in a block **220**, having arrived at GPS coordinates specified in a pickup request, the computer **105** obtains data from lidar **115** and possibly also sensors **120** such as cameras or the like. From this data, the computer **105** generates candidate models to be compared to the target model **125**. For example, the computer **105** may gather lidar and/or image data of objects surrounding the vehicle **101**. From this data, the computer **105** may generate object models. The computer **105** may be programmed to identify objects that could be associated with humans, i.e., potential passengers for pickup.

[0022] Next, in a block 225, having identified candidate models as described with respect to the block 220, the computer 105 scores each of the models, i.e., compares each of the candidate models to the target model 125. For example, a score for each of the models could indicate a degree of confidence that the candidate model matches the target model 125.

[0023] Next, in a block 230, the computer 105 determines whether any of the candidate models matches the target model 125, e.g., whether a degree of confidence of a match exceeds a predetermined threshold such as 90 percent. If one of the candidate models matches the target model 125, then the computer 105 stores the matching candidate model, and the process 200 proceeds to a block 240. If more than one of the candidate models matches the target model 125, then the computer 105, in some implementations, proceeds to a block 235, but in other implementations may select the highest-matching candidate model, e.g., the candidate model matching with a highest degree of confidence, and proceed to the block 240 having stored the highest-matching candidate model as a matching candidate model.

[0024] In the block 235, which may follow the block 230, the computer 105 determines whether the process 200 should continue. For example, the vehicle 101 could be powered off, the pickup request could be canceled, etc. Further, the computer 105 could be programmed to end the process 200 after a predetermined period of time without finding a matching candidate model, e.g., one minute, two minutes, etc. If the process 200 is determined not to continue, then the process 200 ends. Otherwise, the process 200 returns to the block 220.

[0025] In the block 240, which may follow the block 230, the vehicle 101 proceeds to a location of the matched candidate model, and allows a passenger entry to the vehicle 101, e.g., unlock stores, etc. The vehicle 101 proceeds to the location of the matched candidate model according to execution of instructions in the autonomous module 106, e.g., data from sensors 115, 120 may indicate a location of an object, i.e., a passenger to be picked up, based on a matched candidate model. The computer 105 may be programmed, e.g., via the autonomous module 106, to navigate the vehicle 101 to within a predetermined distance, e.g., one meter, three meters, etc., or some other distance as dictated by safety considerations and/or road, sidewalk, etc. configuration, of a passenger to be picked up.

### Conclusion

[0026] Computing devices such as those discussed herein generally each include instructions executable by one or more computing devices such as those identified above, and for carrying out blocks or steps of processes described above. For example, process blocks discussed above may be embodied as computer-executable instructions.

[0027] Computer-executable instructions may be compiled or interpreted from computer programs created using a variety of programming languages and/or technologies, including, without limitation, and either alone or in combination, Java™, C, C++, Visual Basic, Java Script, Perl, HTML, etc. In general, a processor (e.g., a microprocessor) receives instructions, e.g., from a memory, a computer-readable medium, etc., and executes these instructions, thereby performing one or more processes, including one or more of the processes described herein. Such instructions and other data may be stored and transmitted using a variety of computer-readable media. A file in a computing device is generally a collection of

data stored on a computer readable medium, such as a storage medium, a random access memory, etc.

[0028] A computer-readable medium includes any medium that participates in providing data (e.g., instructions), which may be read by a computer. Such a medium may take many forms, including, but not limited to, non-volatile media, volatile media, etc. Non-volatile media include, for example, optical or magnetic disks and other persistent memory. Volatile media include dynamic random access memory (DRAM), which typically constitutes a main memory. Common forms of computer-readable media include, for example, a floppy disk, a flexible disk, hard disk, magnetic tape, any other magnetic medium, a CD-ROM, DVD, any other optical medium, punch cards, paper tape, any other physical medium with patterns of holes, a RAM, a PROM, an EPROM, a FLASH-EEPROM, any other memory chip or cartridge, or any other medium from which a computer can read.

[0029] In the drawings, the same reference numbers indicate the same elements. Further, some or all of these elements could be changed. With regard to the media, processes, systems, methods, etc. described herein, it should be understood that, although the steps of such processes, etc. have been described as occurring according to a certain ordered sequence, such processes could be practiced with the described steps performed in an order other than the order described herein. It further should be understood that certain steps could be performed simultaneously, that other steps could be added, or that certain steps described herein could be omitted. In other words, the descriptions of processes herein are provided for the purpose of illustrating certain embodiments, and should in no way be construed so as to limit the claimed invention.

[0030] Accordingly, it is to be understood that the above description is intended to be illustrative and not restrictive. Many embodiments and applications other than the examples provided would be apparent to those of skill in the art upon reading the above description. The scope of the invention should be determined, not with reference to the above description, but should instead be determined with reference to the appended claims, along with the full scope of equivalents to which such claims are entitled. It is anticipated and intended that future developments will occur in the arts discussed herein, and that the disclosed systems and methods will be incorporated into such future embodiments. In sum, it should be understood that the invention is capable of modification and variation and is limited only by the following claims.

[0031] All terms used in the claims are intended to be given their plain and ordinary meanings as understood by those skilled in the art unless an explicit indication to the contrary is made herein. In particular, use of the singular articles such as “a,” “the,” “said,” etc. should be read to recite one or more of the indicated elements unless a claim recites an explicit limitation to the contrary.

1. A system, comprising a computer for installation in a vehicle, the computer comprising a processor and a memory, wherein the computer is programmed to:

- store at least one first model representing a person;
- receive a request to pick up a passenger, the request including a first location and a personal identifier for the passenger;
- cause the vehicle to navigate to the first location; and
- identify the passenger by comparing a second model generated from vehicle sensor data with the first model.

2. The system of claim 1, wherein the computer is further programmed to cause the vehicle to navigate from the first location to a second location that is determined according to the second model.

3. The system of claim 1, wherein the computer is further programmed to cause the vehicle to provide the passenger with access to the vehicle upon identifying the passenger.

4. The system of claim 1, wherein the vehicle sensor data includes lidar data.

5. The system of claim 4, wherein the vehicle sensor data includes image data.

6. The system of claim 1, wherein the at least one first model is a plurality of first models.

7. The system of claim 6, wherein the computer is further programmed to score each of the first models based on the comparison to the second model, and to identify the passenger according to a highest scoring first model.

8. The system of claim 7, wherein the computer is further programmed to identify the passenger only if the highest scoring first model matches the second model within a predetermined degree of confidence.

9. The system of claim 1, wherein the computer is further programmed to retrieve at least one first model from a remote device.

10. The system of claim 1, wherein at least one first model is provided with the request.

11. A method, comprising:

storing at least one first model representing a person;  
receiving a request to pick up a passenger, the request including a first location and a personal identifier for the passenger;

causing the vehicle to navigate to the first location; and  
identifying the passenger by comparing a second model generated from vehicle sensor data with the first model.

12. The method of claim 11, further comprising navigating from the first location to a second location that is determined according to the second model.

13. The method of claim 11, further comprising providing the passenger with access to the vehicle upon identifying the passenger.

14. The method of claim 11, wherein the vehicle sensor data includes lidar data.

15. The method of claim 14, wherein the vehicle sensor data includes image data.

16. The method of claim 11, wherein the at least one first model is a plurality of first models.

17. The method of claim 16, further comprising scoring each of the first models based on the comparison to the second model, and identifying the passenger according to a highest scoring first model.

18. The method of claim 17, further comprising identifying the passenger only if the highest scoring first model matches the second model within a predetermined degree of confidence.

19. The method of claim 11, further comprising retrieving at least one first model from a remote device.

20. The method of claim 11, wherein at least one first model is provided with the request.

\* \* \* \* \*