



US005927730A

United States Patent [19] Sattler

[11] Patent Number: **5,927,730**
[45] Date of Patent: **Jul. 27, 1999**

- [54] **SCOOTER CART**
- [75] Inventor: **James L. Sattler**, Fairfield Glade, Tenn.
- [73] Assignee: **James F. Sattler**, Chattanooga, Tenn.
- [21] Appl. No.: **09/164,760**
- [22] Filed: **Oct. 1, 1998**

4,989,351 2/1991 Shear .
5,333,702 8/1994 Gaffney et al. .
5,463,853 11/1995 Santoli et al. .

Primary Examiner—Richard M. Camby
Attorney, Agent, or Firm—Rader, Fishman, Grauer & McGarry

Related U.S. Application Data

- [63] Continuation-in-part of application No. 09/014,014, Jan. 27, 1998.
- [51] **Int. Cl.⁶** **B62B 1/00**
- [52] **U.S. Cl.** **280/47.131**; 280/652; 280/656
- [58] **Field of Search** 280/32.7, 402, 280/652, 656, 657, 47.131

[57] ABSTRACT

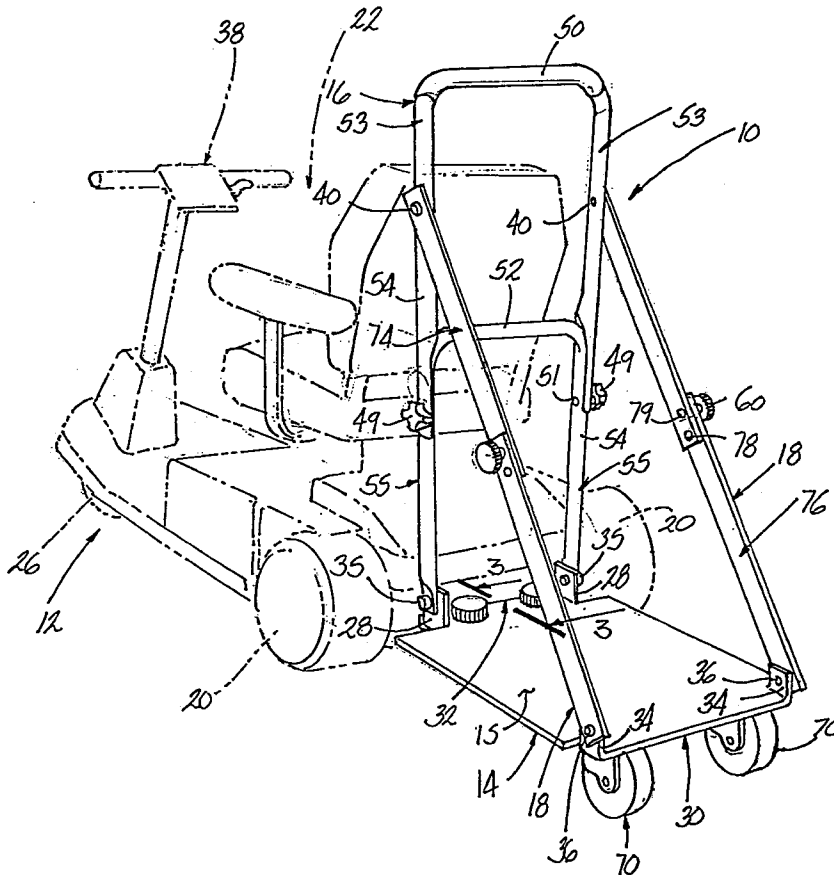
A cart having a platform base adapted to support a user and further including a connector assembly mounted to the front end of the base for rigidly connecting the base to a personal mobility vehicle and including a pair of swivel casters mounted to the underside of the platform base rearwardly of the connector for aiding the maneuverability of the cart when it is connected to the personal mobility vehicle. The connector assembly comprises a clamping mechanism to clamp onto a rear lifting handle in one embodiment and comprises two pair of vertically slidable plates one set of which is pivotally mounted to the front end of the platform and the other set of which are rigidly mounted to the rear portion of the cart in another embodiment. The cart further includes a support rail extending upwardly from the front end of the platform base and adapted to supply support to the user. The support rail is secured by a pair of side braces extending from the rear end of the platform base to the support rail.

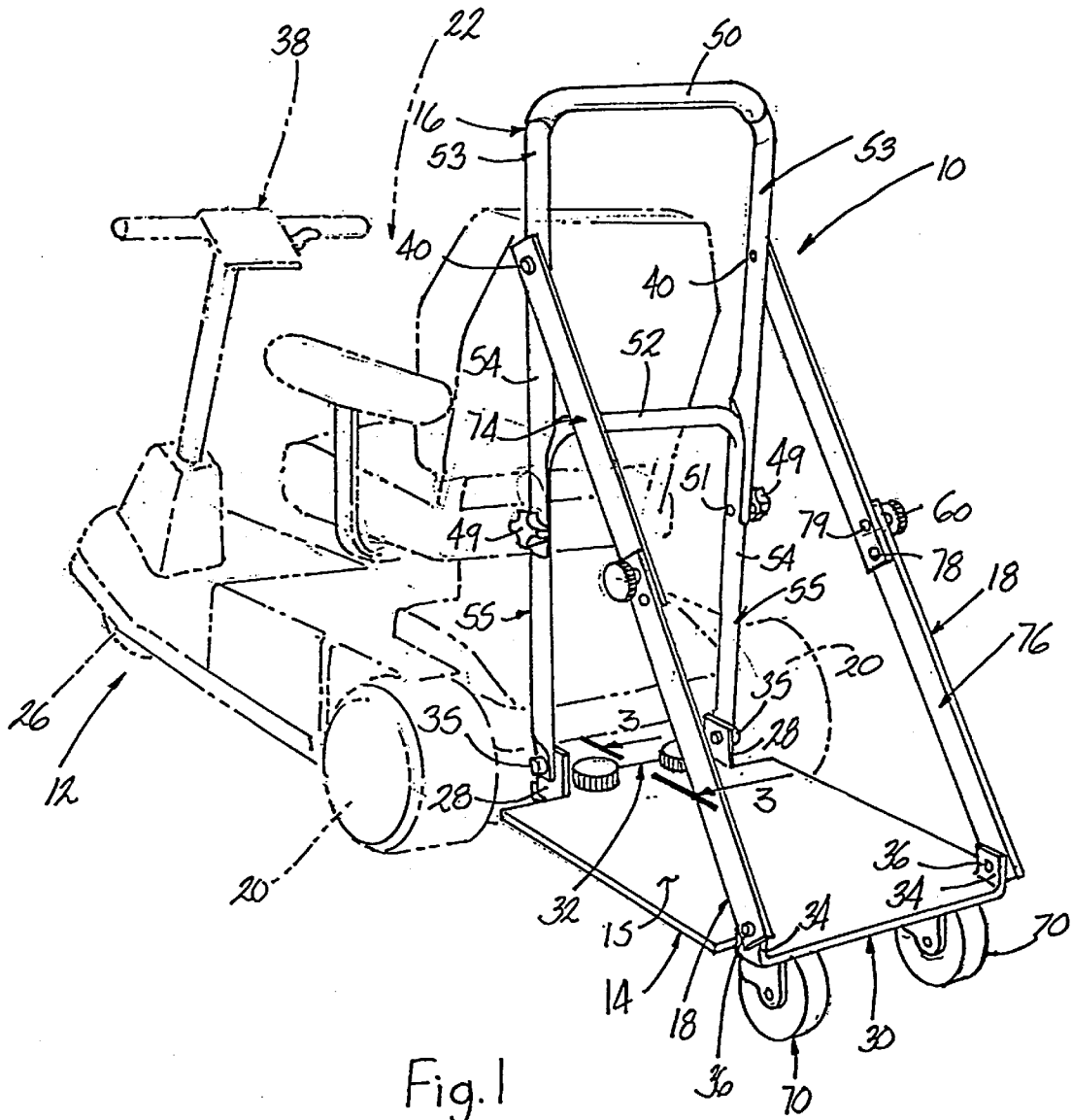
[56] References Cited

U.S. PATENT DOCUMENTS

- 800,317 9/1905 McLaughlin et al. .
- 3,100,547 8/1963 Rosenthal .
- 3,485,314 12/1969 Herr .
- 4,119,331 10/1978 Jackson .
- 4,666,008 5/1987 Shepard et al. .
- 4,750,578 6/1988 Brandenfels .
- 4,828,282 5/1989 Pinto .

39 Claims, 5 Drawing Sheets





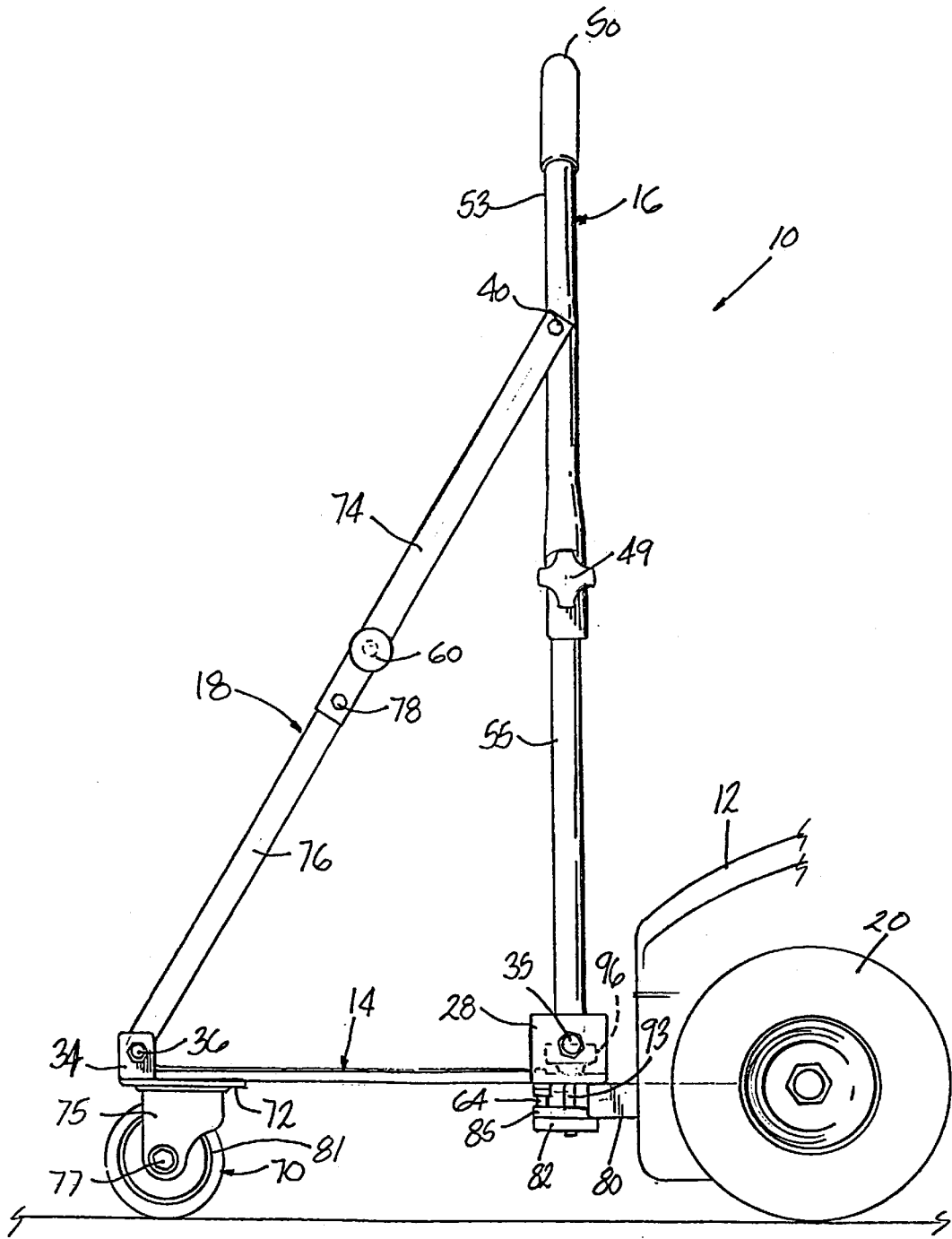


Fig. 2

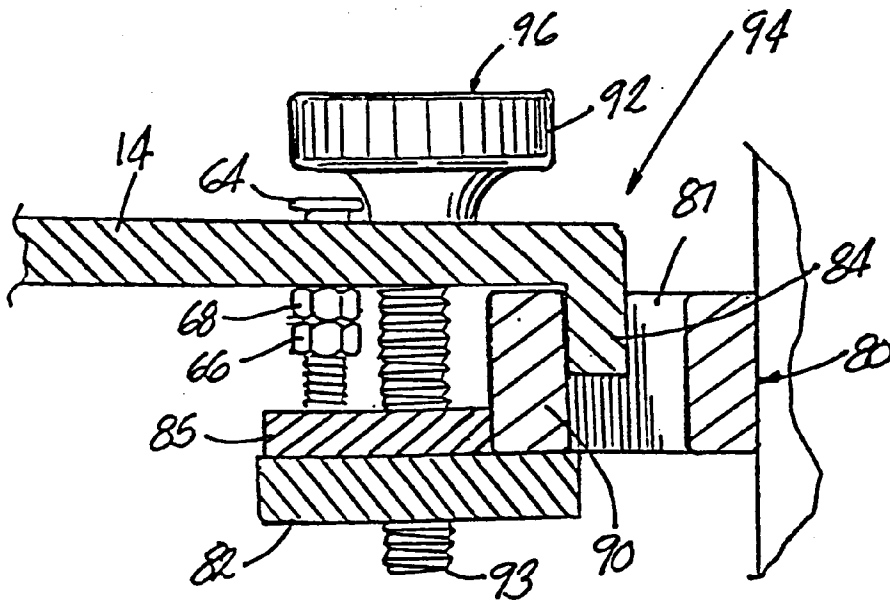


Fig. 3

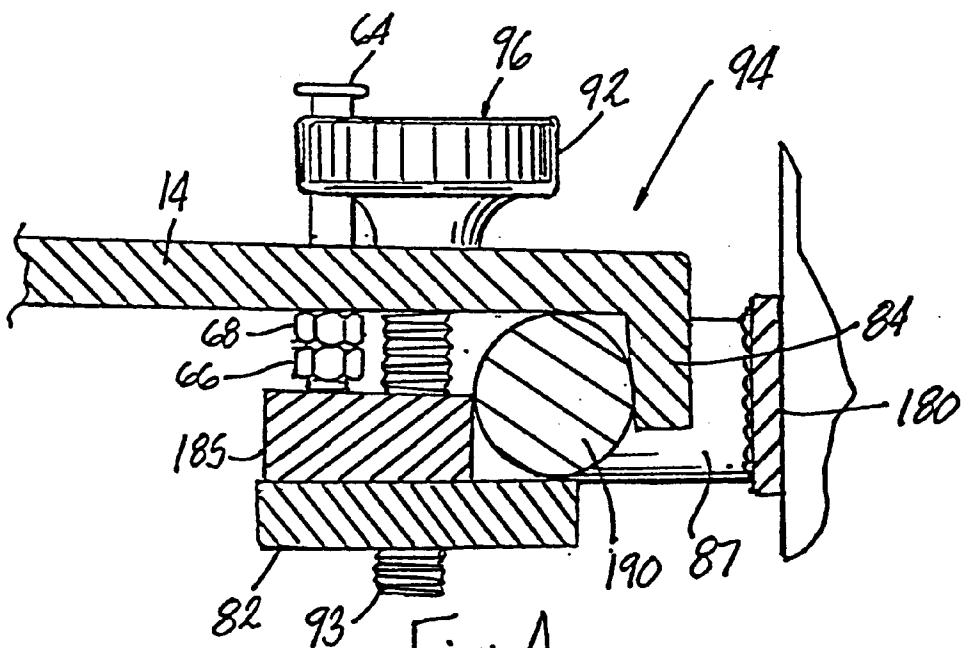


Fig. 4

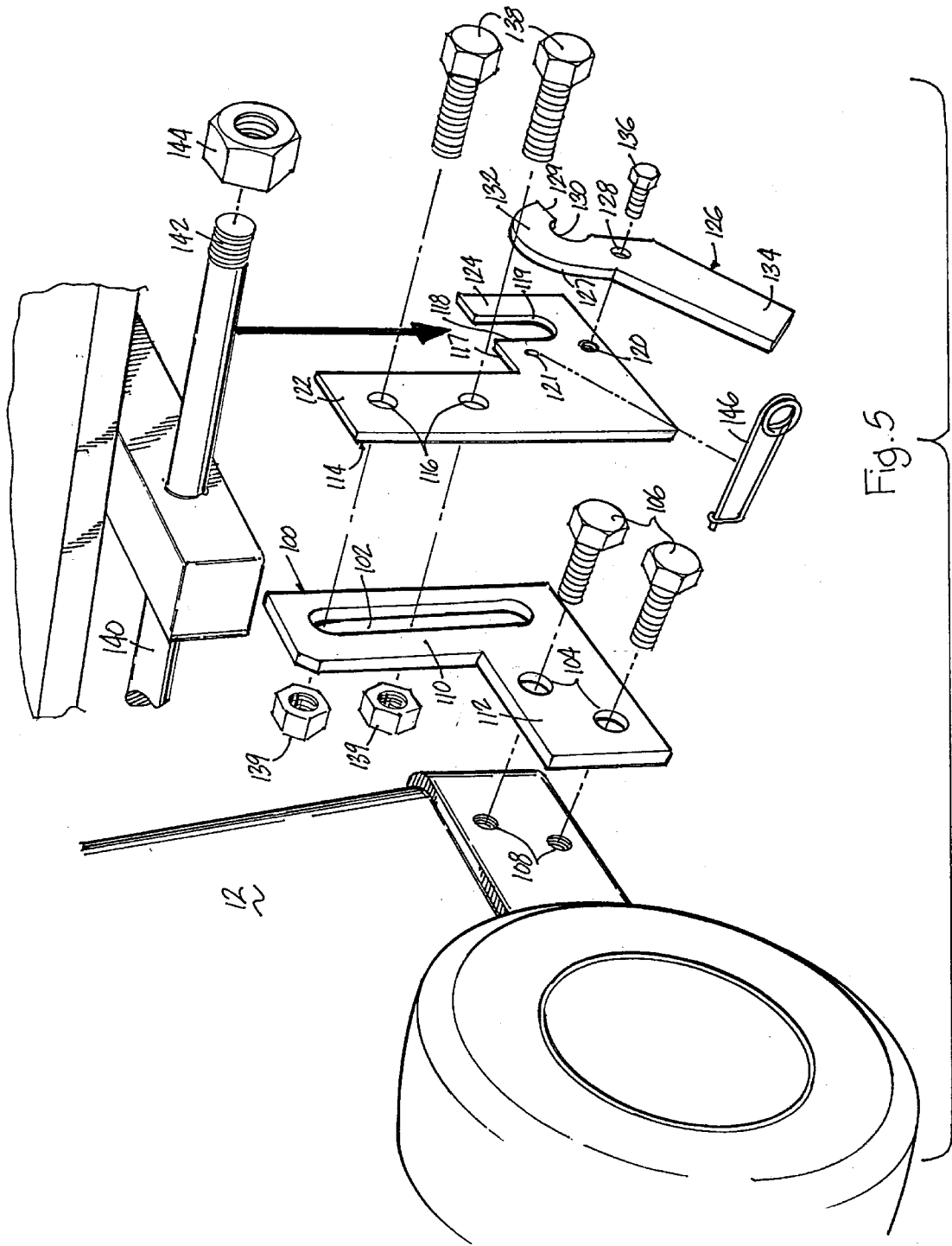


Fig. 5

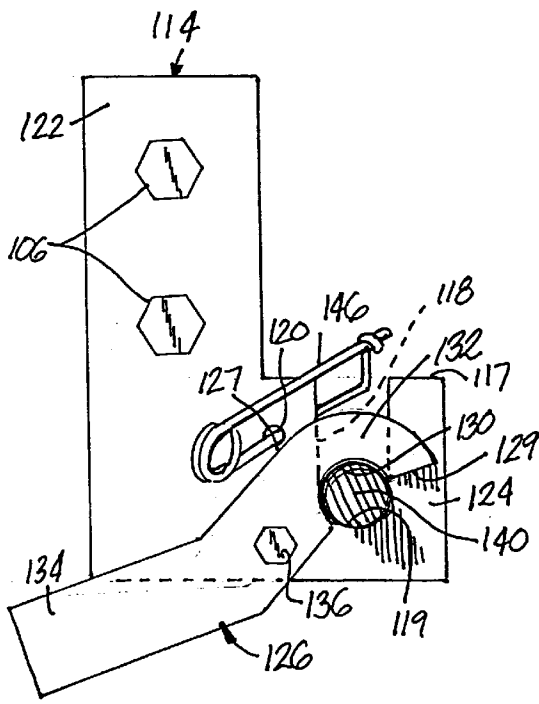


Fig. 6

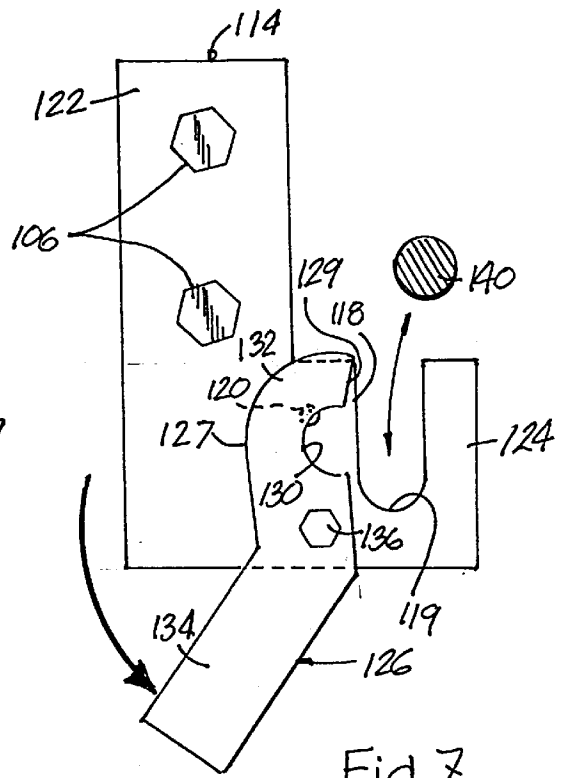


Fig. 7

SCOOTER CART

CROSS REFERENCE TO RELATED APPLICATIONS

This application is a continuation in part of U.S. patent application Ser. No. 09/014,014, filed Jan. 27, 1998.

BACKGROUND OF THE INVENTION

1. Field of the Invention

This invention relates to detachable and collapsible carts and, more particularly, to detachable and collapsible carts for a personal mobility vehicle.

2. Description of the Related Art

Various companies including Burke, Orthokinetics, and Everest and Jennings manufacture personal mobility vehicles. Such carts are typically used by handicapped or disabled people to improve their mobility. It is very difficult, however, for any person accompanying the rider of the personal mobility vehicle to be able to keep up with the rider or travel the distances that the rider is able to travel.

In order to accommodate the person accompanying the rider, a cart can be attached to the personal mobility vehicle. The prior art includes examples of carts attached to motorized vehicles, but none are particularly adapted to accommodate the person accompanying the rider of the personal mobility vehicle. For example, U.S. Pat. No. 3,485,314 discloses a tractor having attached thereto a platform cart on which a person can stand while operating the motorized tractor. Also, U.S. Pat. No. 3,100,547 discloses a wheel chair having a monowheel trailer for carrying a storage battery. U.S. Pat. No. 4,828,282 discloses a powered mower having a cart on which the mower operator can stand while riding under the power of the mower. Finally, U.S. Pat. No. 4,989,351 discloses a snow thrower having a platform on which a person can stand while driving the self-propelled snow thrower.

SUMMARY OF THE INVENTION

According to the invention a detachable and collapsible cart includes a platform base having adapted to support a user and swivel casters mounted to an underside of the platform base. A connector assembly is mounted to the platform base and has brackets for mounting the platform base to a rear portion of a personal mobility vehicle so that the platform base is rigidly connected to the personal mobility vehicle at least with respect to a vertical axis. In one embodiment, the connector assembly brackets are adapted to mount to a horizontal lifting handle bar at the rear of the personal mobility vehicle. In another embodiment, the connector assembly brackets are adapted to mount to a rear frame portion at the rear of the personal mobility vehicle and include a set of height adjustable brackets which are adjustably connected to each other to mount the front end of the platform base to the rear of the personal mobility vehicle so that the cart is adapted to mount to many different types of personal mobility vehicles. The rigid mounting of the forward portion of the platform base to the personal mobility vehicle with respect to a vertical axis and the swivel casters at the rear portion of the platform base tie the cart to the personal mobility vehicle so that they move as one in both forward and reverse directions.

BRIEF DESCRIPTION OF THE DRAWINGS

FIG. 1 is a perspective view of a cart according to the invention with a personal mobility vehicle shown in phantom lines;

FIG. 2 is a partial side view of the cart and a partial side of the vehicle shown in FIG. 1;

FIG. 3 is a partial sectional view cart shown in FIG. 1 and illustrating the hitch connection for connecting the cart to the vehicle;

FIG. 4 is a partial sectional view, like FIG. 3, illustrating a second embodiment of a hitch connection for connecting the cart to the vehicle;

FIG. 5 is a perspective exploded partial view of a third embodiment of the hitch connection for connecting the cart to the vehicle illustrated in FIG. 1;

FIG. 6 is a side elevational view of the third embodiment of the hitch connection of FIG. 5 shown in a locked position; and

FIG. 7 is a side elevational view, like FIG. 6, of the third embodiment of the hitch connection of FIG. 5 shown in an unlocked position.

DETAILED DESCRIPTION OF THE PREFERRED EMBODIMENTS

As shown generally in FIG. 1, a collapsible and detachable cart 10 is attached to a personal mobility vehicle 12, such as a three-wheel scooter as shown. The cart 10 includes a platform base 14, an upright support rail 16 supported by side braces 18, and further having a pair of swivel casters 70.

The platform base 14 includes an upper surface means 15, a rear end 30, and a front end 32. A first and a second embodiment of a hitch connection for securing the cart 10 to the vehicle 12 is best illustrated in FIGS. 3 and 4, where a transverse lip 84 extends downwardly from the front end 32 of the cart 10, and further includes a connector 94 for attaching the cart 10 to the vehicle 12 and mounting tabs 28 disposed at opposite ends and each having an aperture therethrough for pivotally mounting the support rail 16 via pins 35. The support rail 16 includes a pair of parallel arms 54 joined by a hand grip 50 at their uppermost end and by a cross-bar 52 roughly equidistant from the platform base 14 and the hand grip 50. The parallel arms 54 consist of upper and lower U-shaped portions 53, 55 joined at each side by a threaded screw 51 inserted through aligned apertures of each portion and secured in a threaded aperture of a knob 49.

The rear end 30 of the platform base 14 also includes mounting tabs 34 having apertures therein for pivotally mounting the side braces 18 via pins 36. Each side brace 18 includes an upper portion 74 and a lower portion 76, which are pivotally joined by a pin 78, and held rigid by an adjacent screw 79 that is threaded through a pair of aligned apertures in the joining ends of the upper and lower portions 74, 76, respectively. The screw 79 is held secure by a hand-turned knob 60 having a threaded aperture centrally disposed therein, thereby preventing rotation about the pin 78. The side braces 18 are a pair of arms extending from the mounting tabs 34 at the rear end 30 of the platform base 14 to removable pins 40, which releasably secure the upper portions 74 of the side braces 18 and are disposed approximately intermediately between the cross-bar 52 and the hand grip 50 on each side brace 18. In an alternative embodiment, the upper portions of the side braces can be attached to the U-shaped portion 55 rather than the U-shaped portion 53, and the relative size of the U-shaped portion 55 can be larger. This alternative embodiment may make it easier to collapse the braces.

As best shown in FIGS. 1 and 2, the underside of the rear end 30 of the platform base 14 includes a pair of swivel casters 70 mounted adjacent to the sides thereof. The swivel

casters **70** are typical swivel casters including a base **72** with parallel arms **75** supporting an axle **77** on which wheels **81** rotate. The parallel arms **75** are mounted for axial rotation about the base **72** in a direction transverse the plane of the platform **14**, whereby the wheels **81** accommodate the turning motion of the vehicle **12** with the rigidly secured cart **10**.

As best shown in FIGS. 2–4, the personal mobility vehicle **12** optionally includes a lifting handle **80,180** mounted to a lower rear section of the vehicle **12** body for lifting the rear wheels of the vehicle. In the first and the second embodiment, the lifting handle **80,180** is used as the hitch for the cart **10**. More specifically, the lifting handle **80,180** includes a pair of parallel support arms **87** spaced near opposite sides of the lower rear end of the vehicle **12** body. Between these arms **87** is disposed a hand grip **90,190**, thereby forming a substantially C-shaped lifting handle **80,180** on the cart **10** body. FIG. 4 shows the second embodiment in which the lifting handle **180** having the cylindrical hand grip **190** is joined by parallel arms **87** to the vehicle **12** body.

In the first and the second embodiment of the hitch connection shown in FIGS. 3 and 4, the connector **94** includes a pair of spaced-apart threaded fasteners **96**, a block **85,185**, and a hitch plate **82**. The fasteners **96** are threaded through pairs of slots **24** in the platform base **14** and aligned pairs of respective apertures in the block **85,185** and the hitch plate **82**. The block **85,185** is positioned between the hitch plate **82** and platform base **14** and held in position by the fasteners **96**. The lifting handle **80,180** is blocked against horizontal movement by the lip **84** of the platform base **14** and the block **85,185**.

The lifting handle **80,180** of the first and second embodiments, respectively, is adapted to be the hitch for the cart **10** by hanging the lip **84**, which extends downwardly from the front-most end of the front end **32**, over the hand grip **90,190** so that it is disposed between the cart **10** body and the hand grip **90,190**, but resting against an inside surface of the hand grip **90,190**. A hitch plate **82**, disposed in a plane parallel and subjacent to the platform base **14** rests against a lower surface of the hand grip **90,190** and extends rearwardly toward the center of the platform base **14**.

The hitch plate **82** includes a pair of threaded apertures that receive the pair of threaded fasteners **96** each having a coaxial knob **92** and thread **93**, which are inserted through a pair of respectively aligned apertures in the front end **32** of the platform base **14**. The hitch plate **82** extends from below the grip portion **90,190** rearwardly to support the block **85,185**, which, when secured in place, provides support against rearward movement of the grip portion **90,190** away from the lip **84**. As shown in FIG. 4, if the tubular hand grip portion **190** is included on the vehicle **12**, a block **185** that is taller relative to the handle **190** should be used. The apertures of the hitch plate **82**, the platform **14**, and the block **85,185** are aligned so that the threaded fasteners **96** actuated by the knobs **92** clamp together the hitch plate **82** and the platform **14** with the hand grip **90,190** pressed therebetween.

The front end **32** of the platform base **14** further includes another aperture slightly rearward and intermediate of the pair of slots **24** receiving the threaded fasteners **96**. A support screw **64** is threaded through this third aperture until a tip of the screw strikes the block **85,185**. The support screw **64** is held in this position by threading a first nut **68** until it is tight against an underside of the platform base **14**. The first nut **68** is secured against inadvertent loosening by tightly threading a lock nut **66** against and subjacent the first nut **68**.

To detach the cart **10** from the vehicle **12**, turn the knobs **92** to unthread the fasteners **96** and thereby release the hitch plate **82**. Once the fasteners **96** are loosened, they travel in the slots **24** so that the platform base **14** can be shifted forward and then lifted to remove the lip **84** from its inside engagement with the hand grip **90,190** of the handle **80,180**.

Referring now to FIG. 5, an exploded partial view of the third embodiment of the invention is shown. The connector assembly for the cart comprises a first L-shaped bracket **100**, a second L-shaped bracket **114**, and a latch **126**. The first L-shaped bracket **100** comprises a vertical leg **110** having a vertically extending slot **102** and a horizontal leg **112** having horizontally and vertically spaced apertures **104**. The second L-shaped bracket **114** comprises a vertical leg **122** having two vertically spaced and horizontally aligned circular apertures **116** and a horizontal leg **124** having an upper face **117** and a U-shaped recess **118** extending downwardly therefrom. The bracket **114** further comprises a circular aperture **120** located near the bottom of and spaced intermediate the ends of the horizontal leg **124** and a smaller circular aperture **121** located proximate the U-shaped recess **118** and intermediate the recess **118** and the vertical leg **122**.

The latch **126** comprises a straight portion **134** and a curved portion **132**, which has a lower face **129** and an U-shaped recess **130** extending upwardly therefrom. The latch **126** further comprises a circular aperture **128** located approximately at the junction between the straight portion **134** and the curved portion **132**. The connector assembly further comprises a rod **140** having a threaded end **142**, which mates with a threaded nut **144**. The rod **140** is rigidly connected to the front end **32** of the platform **14** of the cart **10** so that the rod **140** is maintained at approximately the same height as the platform **14** when in a level position.

To assemble the connector assembly of FIGS. 5–7, the first bracket **100**, the second bracket **114**, the latch **126**, and the pin **146** are each placed on both sides of the lower rear portion of the vehicle **12**. First, the first bracket **100** is secured to the vehicle **12** such that the vertical leg **110** of the bracket **100** extends upwardly and is located rearward of the vehicle **12**, as shown in FIG. 5, by aligning the apertures **104** of the bracket **100** with corresponding threaded apertures **108** on the vehicle **12** and inserting equally threaded fasteners **106** through apertures **104** and into apertures **108**.

Next, the vertically spaced apertures **116** of the bracket **114** are aligned with the vertically extending slot **102** of the bracket **100** such that the vertical leg **122** thereof extends upwardly and such that the horizontal leg **124** thereof extends toward the cart **10**, as shown in FIG. 5. Next, threaded fasteners **138** are inserted through the apertures **116** and through the slot **102** of the bracket **100** and secured to the fasteners **138** with equally threaded nuts **139**. The bracket **114** is free to slide vertically with respect to the bracket **100** as the fasteners **138** slide in the vertical slot **102** of the bracket **100**.

Next, the circular aperture **128** of the latch **126** is aligned with the circular aperture **120** of the second bracket **114** such that the latch **126** is further to the outside of the vehicle **12** and such that the straight portion **134** of the latch **126** extends towards the vehicle **12** and the curved portion **132** of the latch **126** extends toward the cart **10**. Next, a pin **136** is inserted through the aperture **128** of the latch **126** and, subsequently, through the aperture **120** of the second bracket **114** such that the latch **126** is free to rotate about the pin **136**.

To secure the cart **10** to the vehicle **12**, the rod **140** of the cart **10** is lowered into the U-shaped recess **118** of the second bracket **114** until it rests in a lower portion **119** of the recess

118. Next, the latch **126** is rotated about the pin **136** until the U-shaped recess **130** of the latch **126** engages the rod **140** on an upper surface thereof. Next, the pin **146** is inserted into the aperture **121** of the second bracket **114**. The aperture **121** is located such that, when the latch **126** engages the rod **140** to secure the cart **10**, the pin **146** in the aperture **121** rests rigidly against an upper surface **127** of the latch **126**. This locked position is shown in FIG. **6**. Corresponding actions are then taken on both sides of the vehicle **12** to attach the cart **10** to the vehicle **12**.

To detach the cart **10** from the vehicle **12**, the pin **146** is removed from the aperture **121** of the second bracket **114** and the latch **126** is rotated such that the curved portion **132** thereof moves out of locking engagement with the rod **140**. Next, the front portion **32** of the platform **14** of the cart **10** is moved upwardly so as to remove the rod **140** from the U-shaped recess **118** of the second bracket **114**. A final stage of the detachment of the cart **10** from the vehicle **12** is shown in FIG. **7**. Corresponding actions need to be taken on both sides of the vehicle **12** to detach the cart **10** from the vehicle **12**.

Once the cart **10** is removed from the vehicle **12**, the support rail **16** and side braces **18** can be collapsed to facilitate efficient storage of the cart **10**. First, the pins **40** are removed and the knobs **60** joining the upper and lower portions **74**, **76** of the side braces **18** are loosened and the screws **79** are removed so that the upper and lower portions **74**, **76** can pivot toward one another about pins **78**. More particularly, the joints connecting the upper and lower portions **74**, **76** of the braces **18** are collapsed inwardly at the pins **78** so that the threaded knob **60** is moved toward the junction of the support rail **16** and the platform **14**.

Once the side braces **18** are detached and collapsed, the same can be done to the support rail **16**. First, the threaded knobs **49** securing the upper portion **53** to the lower portion **55** of the support rail **16** at approximately the intersection of the cross-bar **52** and each tubular arm **54** is loosened so that the upper portion **53** can pivot relative to the lower portion **55**. The lower portion **55** is then pivoted about the mounting tabs **28** so that the lower portion **55** lies substantially planar with the platform base **14**. Then, the upper portion **53** is pivoted toward the front end **32** of the platform base **14** so that the lower portion **55** substantially nests in the upper portion **53**. Once the cart **12** has been collapsed and detached in this manner, it is easily stored, for example, in a trunk or passenger compartment of an automobile. When it is needed for use, the cart can be quickly assembled by reversing the above description for collapsing and detaching the cart.

It should be evident to one of skill in the art that the collapsible support rail **16** and side braces **18** can be used on other cart types, such as those having an articulated connection to the vehicle **12** or wheels rotationally mounted on fixed supports.

In all embodiments of the invention, the cart **10** has a horizontally rigid connection to the personal mobility vehicle **12** so that the vehicle **12** and cart **10** will move along a horizontal course as one unit. The swivel casters **70** enable the cart to turn with the vehicle **12** to which it is rigidly connected. Thus, the cart **10** and vehicle **12** can turn and back up in a small area, as there is no trailer-type cart to maneuver and steer when doing so. Although the cart is pivotally mounted to the vehicle about a transverse horizontal axis in the third embodiment (FIGS. **5-7**), the connection is still rigid with respect to a vertical axis so that the connection assembly functions in use as the first two embodiments, i.e., the cart **10** and vehicle **12** can turn and

back up in a small area, as there is no trailer-type cart to maneuver and steer when doing so.

The platform base **14** can be any length, depending on the proposed function. The upper surface means **15** of platform base **14** shown is suitable for standing, but can be made longer and can accommodate a chair for seated transport.

Reasonable variation and modification are possible within the spirit of the foregoing specification and drawings without departing from the scope of the invention.

What is claimed is:

1. For use with a personal mobility vehicle having a rear portion, a cart comprising:

a platform base having an upper surface means for supporting a user, an underside, a front end, and a rear portion;

a connector assembly mounted to the front end of the platform base and adapted to rigidly connect the platform base to the rear portion of the personal mobility vehicle at least in a horizontal plane, the connector assembly including a hitch plate and a pair of threaded fasteners that are threaded into the hitch plate to clamp an elongated bar handle on the rear portion of the cart between the platform base and the hitch plate;

a pair of swivel casters mounted to the rear portion of the platform base.

2. A cart according to claim **1** wherein the swivel casters are mounted adjacent the rear end of the underside of the platform base.

3. A cart according to claim **1** wherein the connector assembly further comprises a support screw threaded into the platform base or the hitch plate and positioned rearwardly of the threaded fastener for counterbalancing the clamping force of the handle on the hitch plate.

4. A cart according to claim **3** wherein the connector assembly further comprises a block that is adapted to rearwardly abut the handle and is positioned between the support screw and either the hitch plate or the platform base for preventing rearward movement of the handle with respect to the platform base.

5. A cart according to claim **4** wherein the platform base includes a transversely extending lip projecting downwardly at the front end thereof and adapted to prevent forward movement of the handle with respect to the platform base.

6. A cart according to claim **1** wherein the connector further comprises a block that is adapted to rearwardly abut the handle and is positioned between the support screw and either the hitch plate or the platform base and is adapted to prevent rearward movement of the handle with respect to the platform base.

7. A cart according to claim **6** wherein the platform base includes a transversely extending lip projecting downwardly at the front end thereof and is adapted to prevent forward movement of the handle with respect to the platform base.

8. For use with a personal mobility vehicle having a rear portion, a cart comprising:

a platform base having an upper surface means for supporting a user, an underside, a front end, and a rear portion;

a connector assembly mounted to the front end of the platform base and adapted to rigidly connect the platform base to the rear portion of the personal mobility vehicle at least in a horizontal plane;

a pair of swivel casters mounted to the rear portion of the platform base; and a support rail extending upwardly from the front end of the platform base and adapted to provide support to the user.

9. A cart according to claim 8 and further comprising a pair of side braces extending from the rear portion of the platform base to the support rail for bracing the support rail.

10. A cart according to claim 9 wherein the support rail is pivotably mounted to the platform base so that the support rail can be collapsed for storage.

11. A cart according to claim 10 wherein the side braces are pivotably mounted to the platform base so that the side braces can be collapsed for storage.

12. A cart according to claim 11 wherein the support rail has an upper portion and a lower portion and the upper portion is pivotably connected to the lower portion so that the support rail can be collapsed for storage by pivoting the upper portion toward the lower portion.

13. A cart according to claim 12 wherein each side brace has an upper portion and a lower portion and the upper portion is pivotably connected to the lower portion so that the side braces can be collapsed for storage by pivoting the upper portion toward the lower portion.

14. A cart according to claim 13 wherein a removable pin releasably connects the upper portion of each side brace to the upper portion of the support rail.

15. A cart according to claim 13 wherein the connector assembly comprises a hitch plate and a pair of threaded fasteners that are threaded into the hitch plate to clamp an elongated bar handle on the rear portion of the cart between the platform base and the hitch plate.

16. A cart according claim 15 wherein the connector further comprises a block that is adapted to rearwardly abut the handle and is positioned between the hitch plate and the platform base and is adapted to prevent rearward movement of the handle with respect to the platform base.

17. A cart according to claim 16 wherein the platform base includes a transversely extending lip projecting downwardly at the front end and is adapted to prevent forward movement of the handle with respect to the platform base.

18. A cart according to claim 17 wherein the connector further comprises a support screw threaded into the platform base or the hitch plate and positioned rearwardly of the threaded fastener for counterbalancing the clamping force of the handle on the hitch plate.

19. A cart according to claim 13 wherein the connector assembly comprises a pair of first plates adapted to be rigidly attached to the rear portion of the personal mobility vehicle, a pair of second plates attached to the front end of the platform base, and a vertical slidable coupling between each pair of first and second plates whereby the front end of the platform base is adapted to be vertically adjustable with respect to the rear portion of the personal mobility vehicle.

20. A cart according to claim 19 wherein the slidable coupling includes a vertical slot in one of the first and second plate, apertures in the other of the first and second plates and pin connectors extending through the apertures and the vertical slot.

21. A cart according to claim 20 wherein the second plates are pivotally connected to the front end of the platform.

22. A cart according to claim 21 wherein the pivotal connection between the second plates and the front end of the platform comprises a rod mounted horizontally and across the front end of the platform, a U-shaped recess in the second plates and a latch pivotally mounted to each of the second plates and adapted to releasably retain the rod in the U-shaped recess in the second plates when the rod is positioned in the U-shaped recesses in the second plates.

23. For use with a personal mobility vehicle having a rear portion, a cart comprising:

a platform base having an upper surface means for supporting a user, an underside, a front end, and a rear portion;

a connector assembly to the front end of the platform base and adapted to rigidly connect the platform base to the rear portion of the personal mobility vehicle at least in a horizontal plane, the connector assembly including a pair of first plates adapted to be rigidly attached to the rear portion of the personal mobility vehicle, a pair of second plates attached to the front end of the platform base, and a vertical slidable coupling between each pair of first and second plates whereby the front end of the platform base is adapted to be vertically adjustable with respect to the rear portion of the personal mobility vehicle; and

a pair of swivel casters mounted to the rear portion of the platform base.

24. A cart according to claim 23 wherein the slidable coupling includes a vertical slot in one of the first and second plate, apertures in the other of the first and second plates and pin connectors extending through the apertures and the vertical slot.

25. A cart according to claim 24 wherein the second plates are pivotally connected to the front end of the platform.

26. A cart according to claim 25 wherein the pivotal connection between the second plates and the front end of the platform comprises a rod mounted horizontally and across the front end of the platform, a U-shaped recess in the second plates and a latch pivotally mounted to each of the second plates and adapted to releasably retain the rod in the U-shaped recess in the second plates when the rod is positioned in the U-shaped recesses in the second plates.

27. In combination with a personal mobility vehicle having front and rear portions, front and rear wheels adapted to roll on a supporting surface, a seat for supporting an occupant and a steering and control column at the front portion, a cart comprising:

a platform base having an upper surface means for supporting a user, an underside, a front end, and a rear portion;

a connector assembly mounted to the front end of the platform base and rigidly connecting the platform base to the rear portion of the personal mobility vehicle;

a pair of wheels mounted to the underside of the platform base at a rear portion thereof and in substantially supporting relationship with the supporting surface for supporting the rear portion of the platform.

28. A cart according to claim 27 wherein the pair of wheels are swivel caster wheels.

29. A cart according to claim 27 wherein the cart further includes a support rail extending upwardly from the front end of the platform base and adapted to provide support to the user.

30. A cart according to claim 29 and further comprising a pair of side braces extending from the rear end of the platform base to the support rail for bracing the support rail.

31. A cart according to claim 30 wherein the support rail is pivotably mounted to the platform base so that the support rail can be collapsed for storage.

32. A cart according to claim 31 wherein the side braces are pivotably mounted to the platform base so that the side braces can be collapsed for storage.

33. A cart according to claim 32 wherein the support rail has an upper portion and a lower portion and the upper portion is pivotably connected to the lower portion so that the support rail can be collapsed for storage by pivoting the upper portion toward the lower portion.

34. A cart according to claim 33 wherein each side brace has an upper portion and a lower portion and the lower portion is pivotably connected to the lower portion so that

the side braces can be collapsed for storage by pivoting the upper portion toward the lower portion.

35. A cart according to claim **34** wherein a removable pin releasably connects the upper portion of each side brace to the upper portion of the support rail.

36. A cart according to claim **27** wherein the connector assembly comprises a pair of first plates adapted to be rigidly attached to the rear portion of the personal mobility vehicle, a pair of second plates attached to the front end of the platform base, and a vertical slidable coupling between each pair of first and second plates whereby the front end of the platform base is adapted to be vertically adjustable with respect to the rear portion of the personal mobility vehicle.

37. A cart according to claim **36** wherein the slidable coupling includes a vertical slot in one of the first and second

plate, apertures in the other of the first and second plates and pin connectors extending through the apertures and the vertical slot.

38. A cart according to claim **37** wherein the second plates are pivotally connected to the front end of the platform.

39. A cart according to claim **38** wherein the pivotal connection between the second plates and the front end of the platform comprises a rod mounted horizontally and across the front end of the platform, a U-shaped recess in the second plates and a latch pivotally mounted to each of the second plates and adapted to releasably retain the rod in the U-shaped recess in the second plates when the rod is positioned in the U-shaped recesses in the second plates.

* * * * *