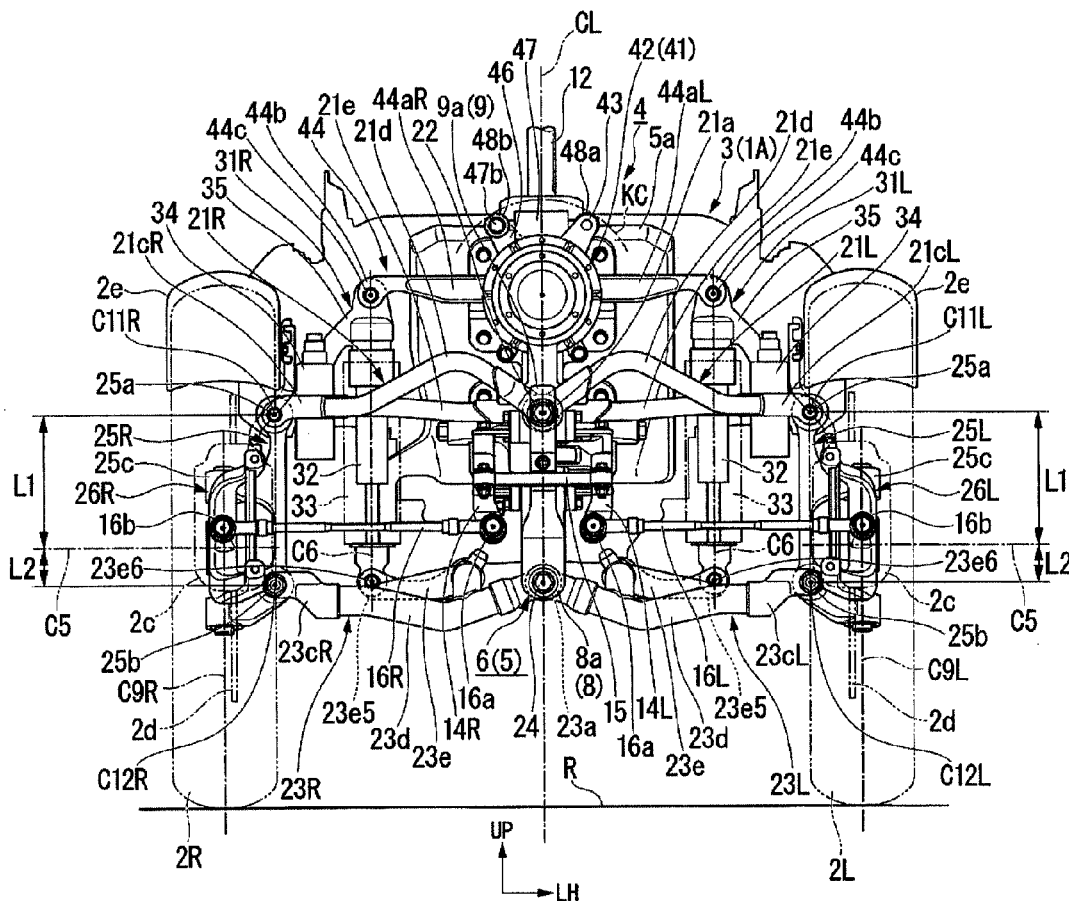


(43) **Pub. Date:** **Aug. 11, 2016**



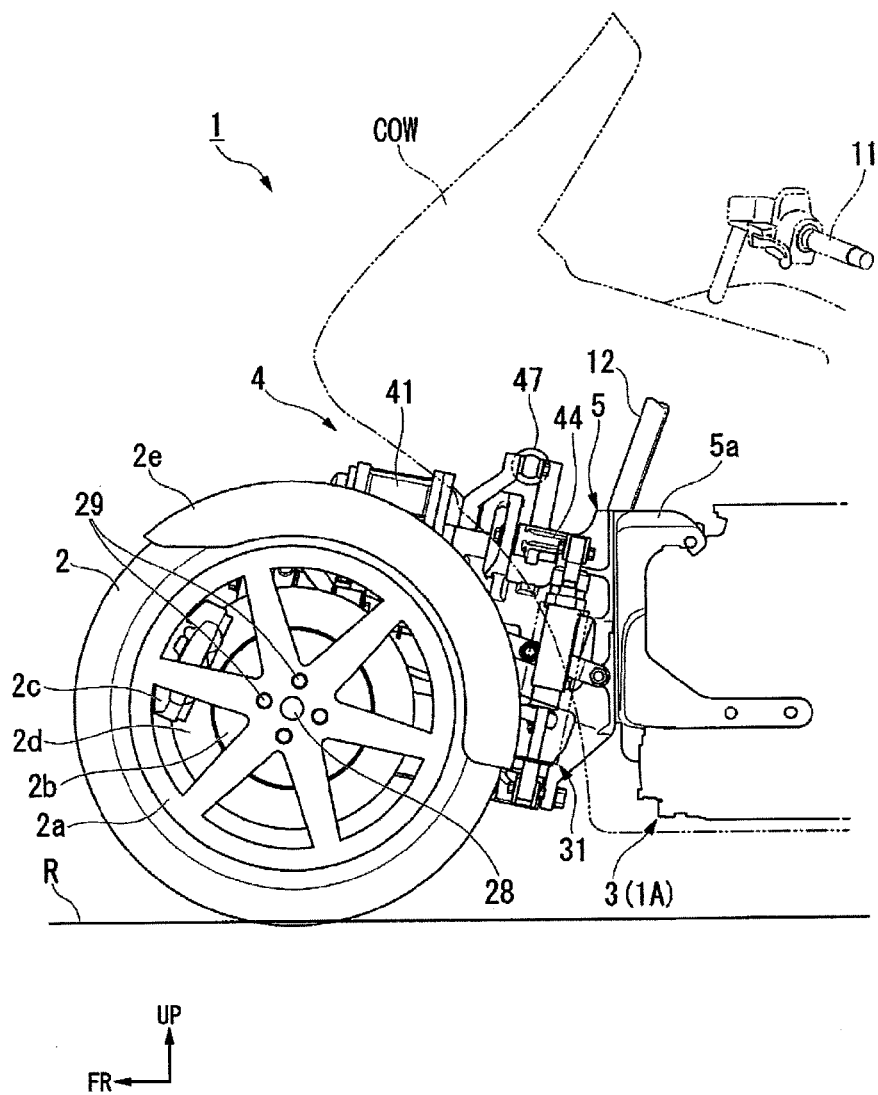


FIG. 1

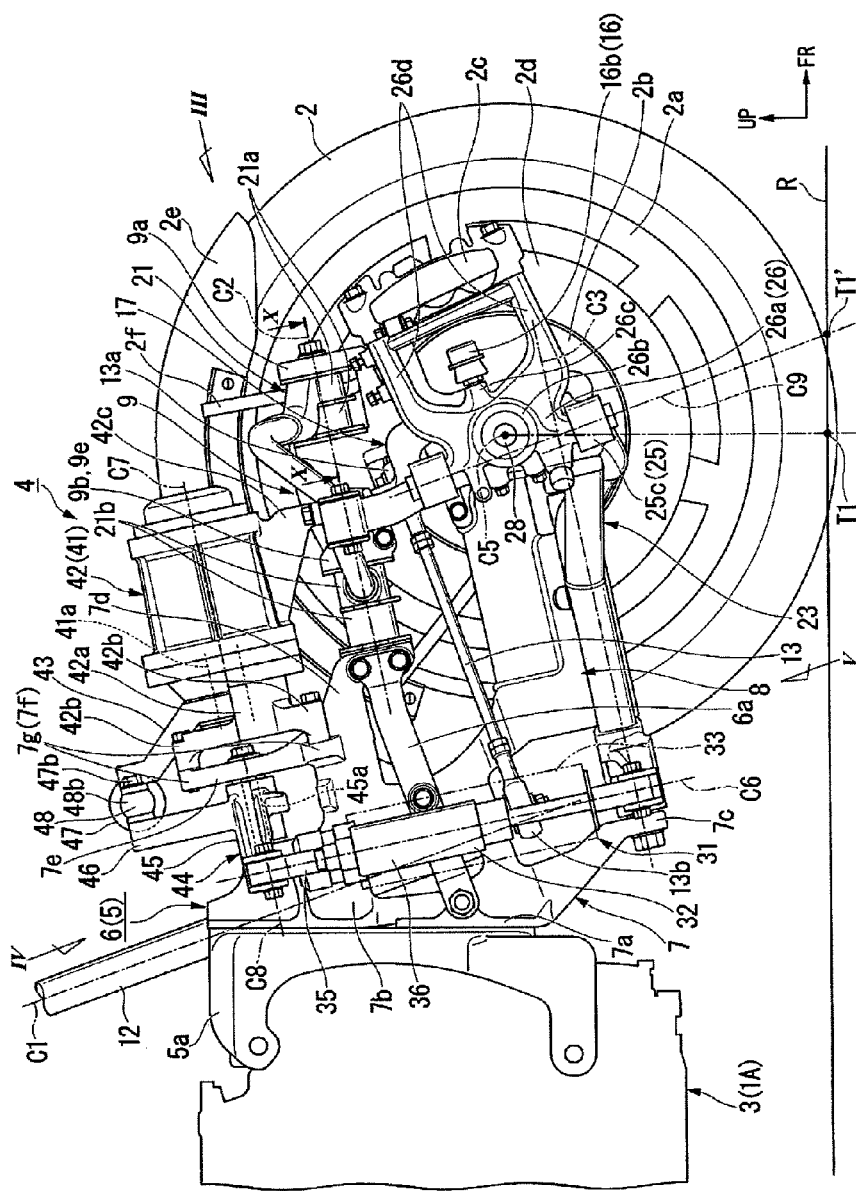


FIG. 2

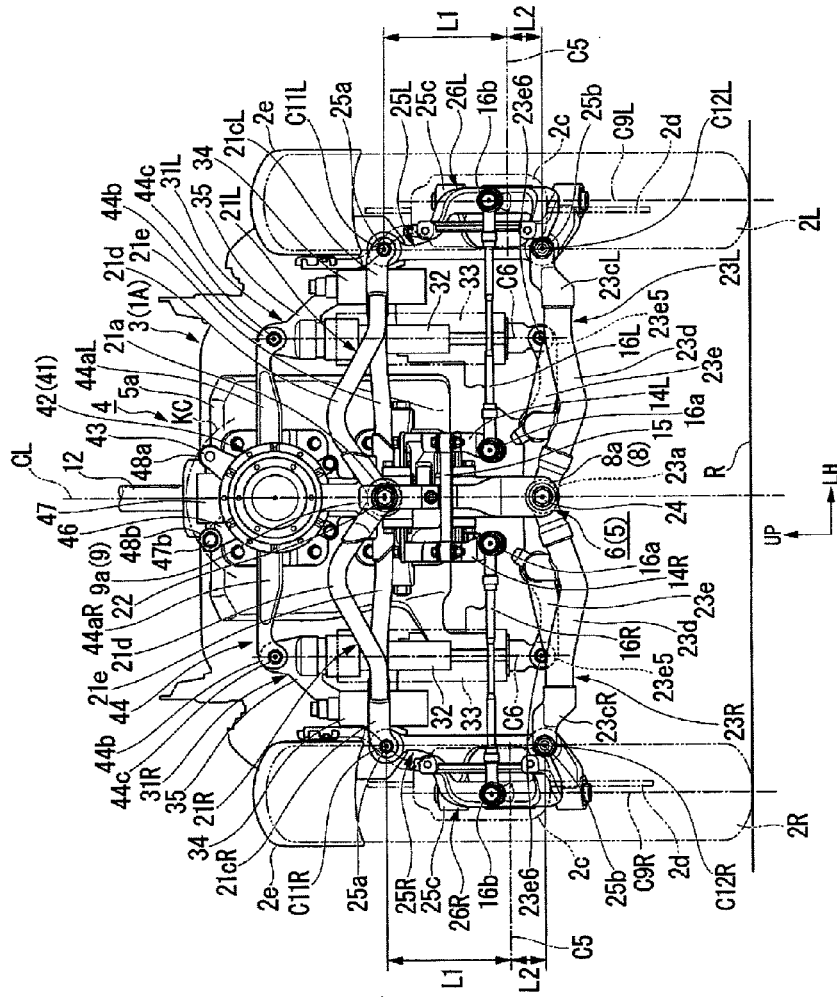


FIG. 3

FIG. 4

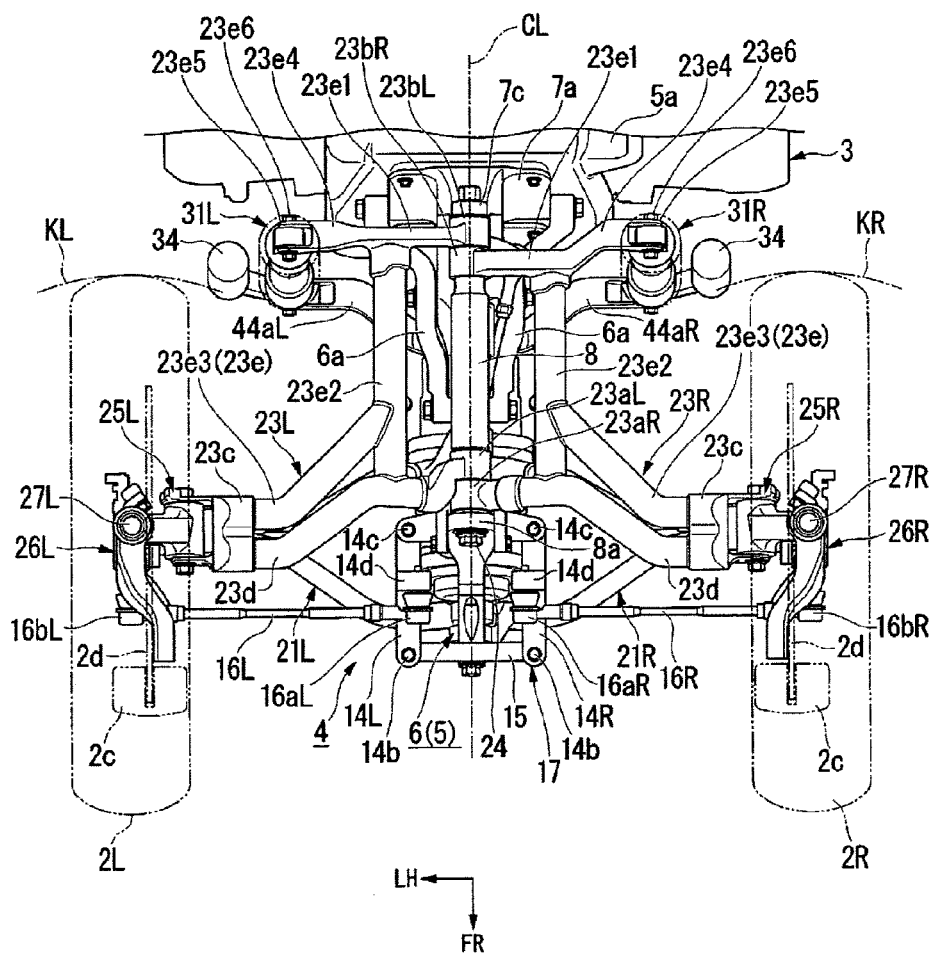


FIG. 5

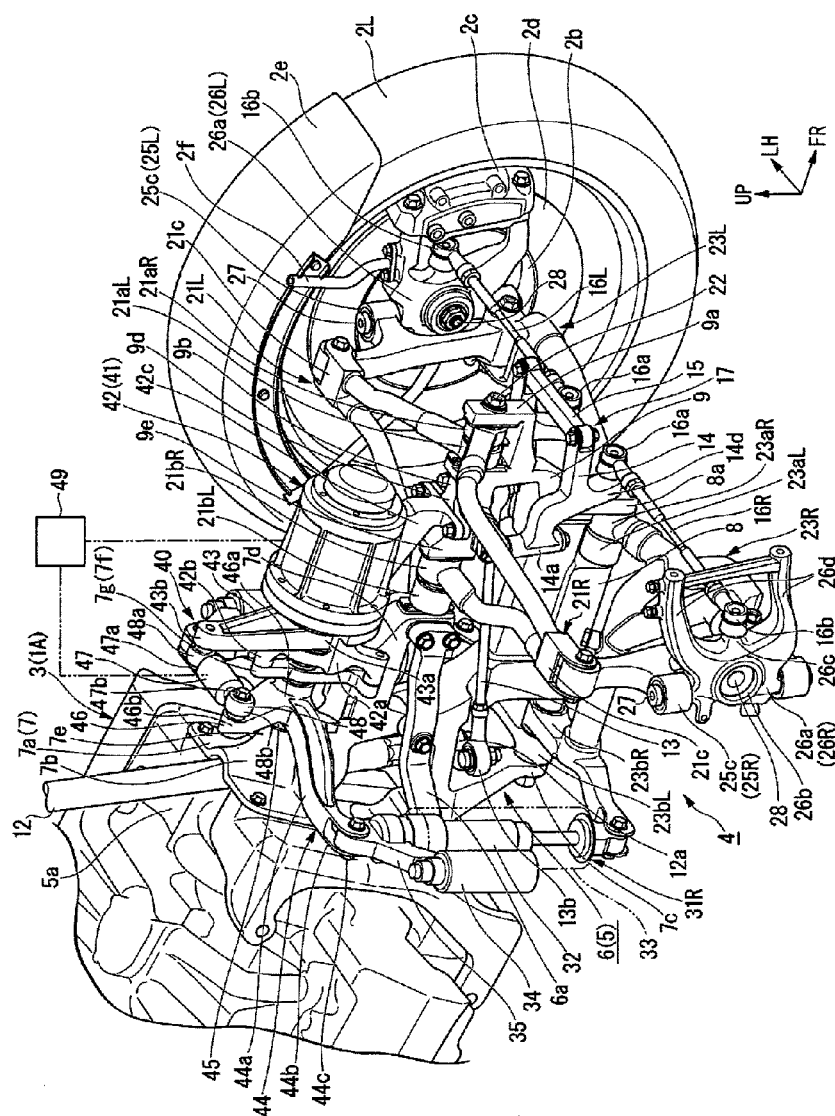
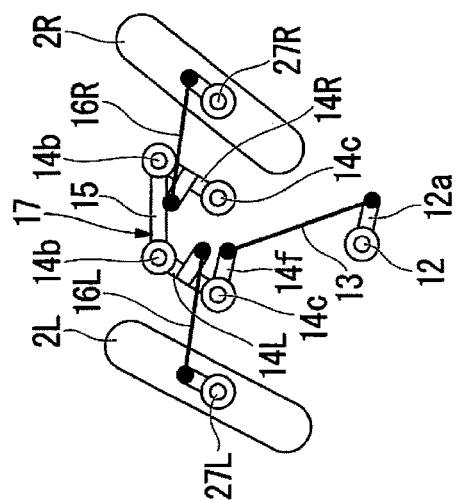
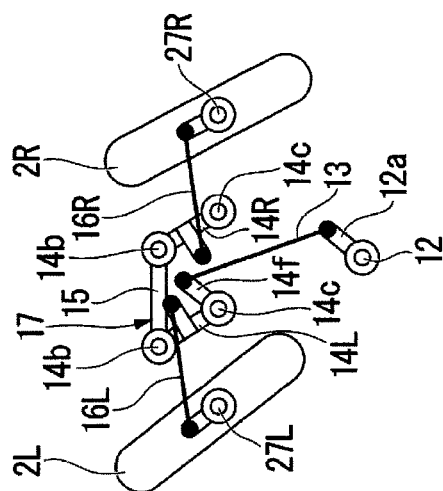
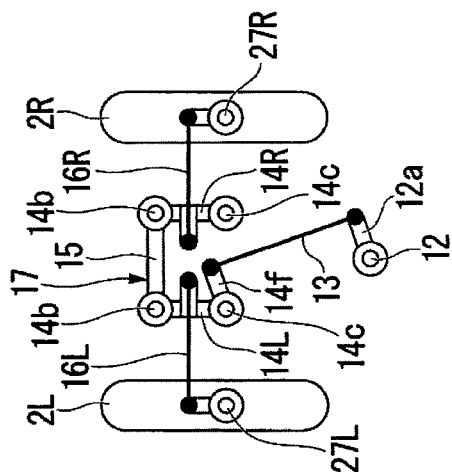


FIG. 6



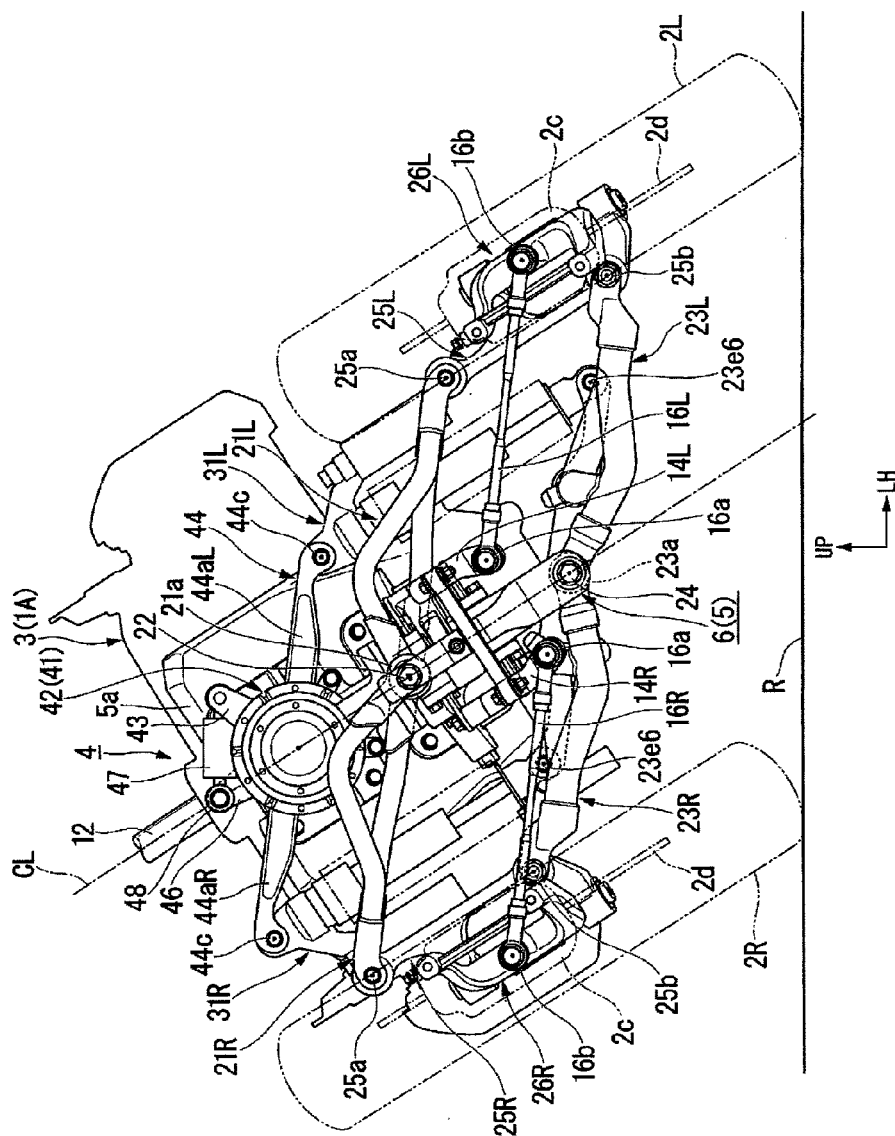


FIG. 8

FIG. 9

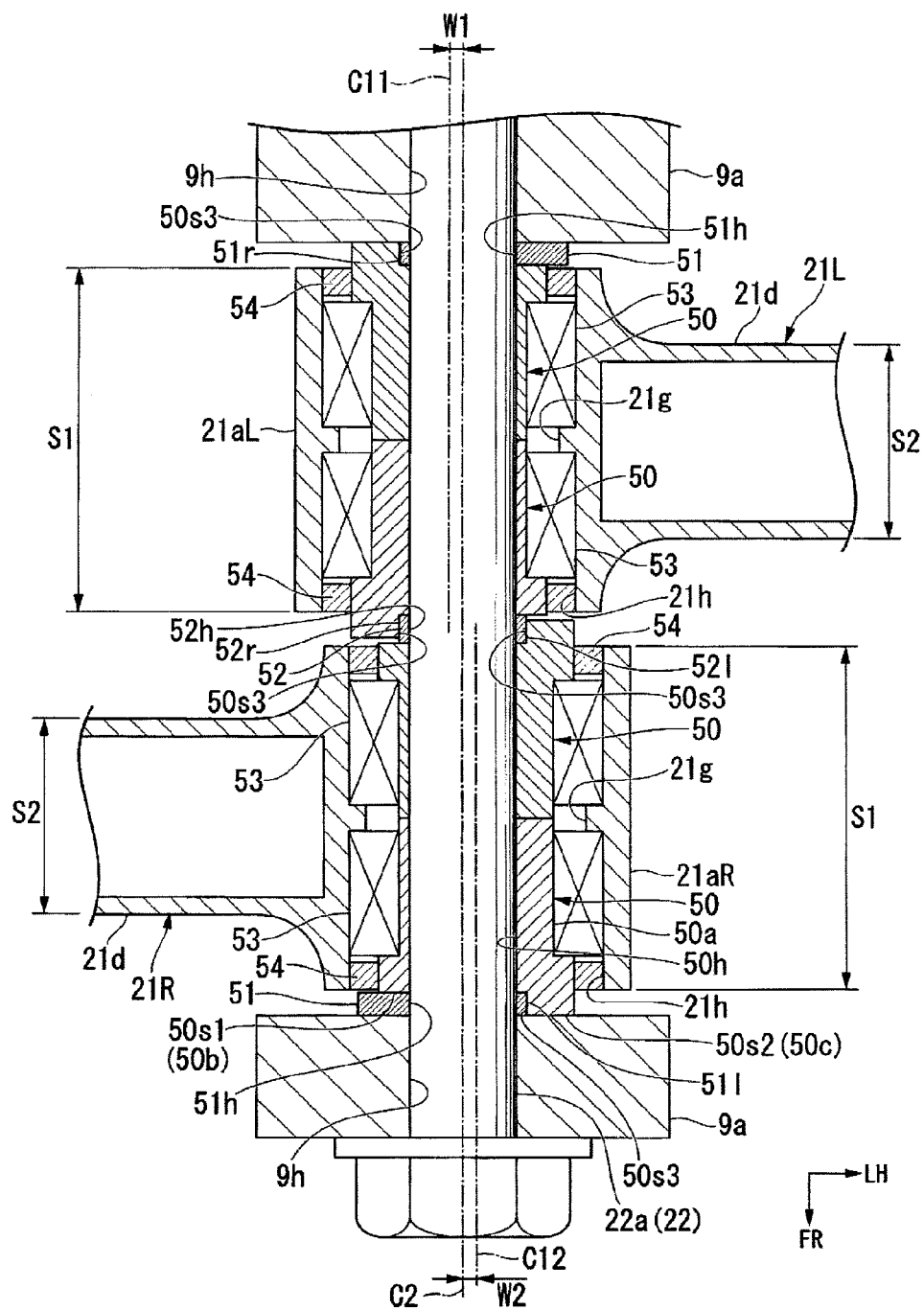


FIG. 10

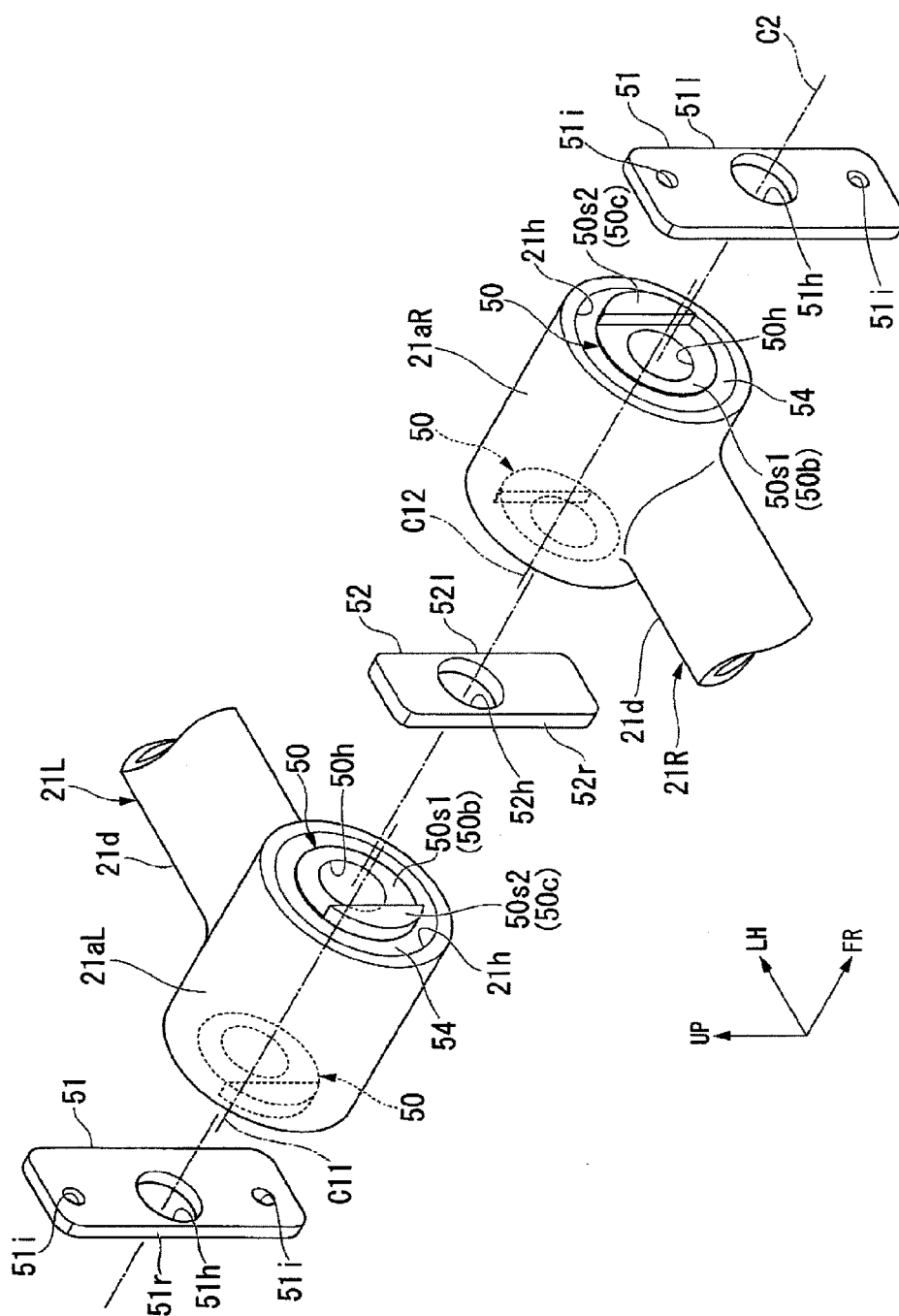


FIG. 11

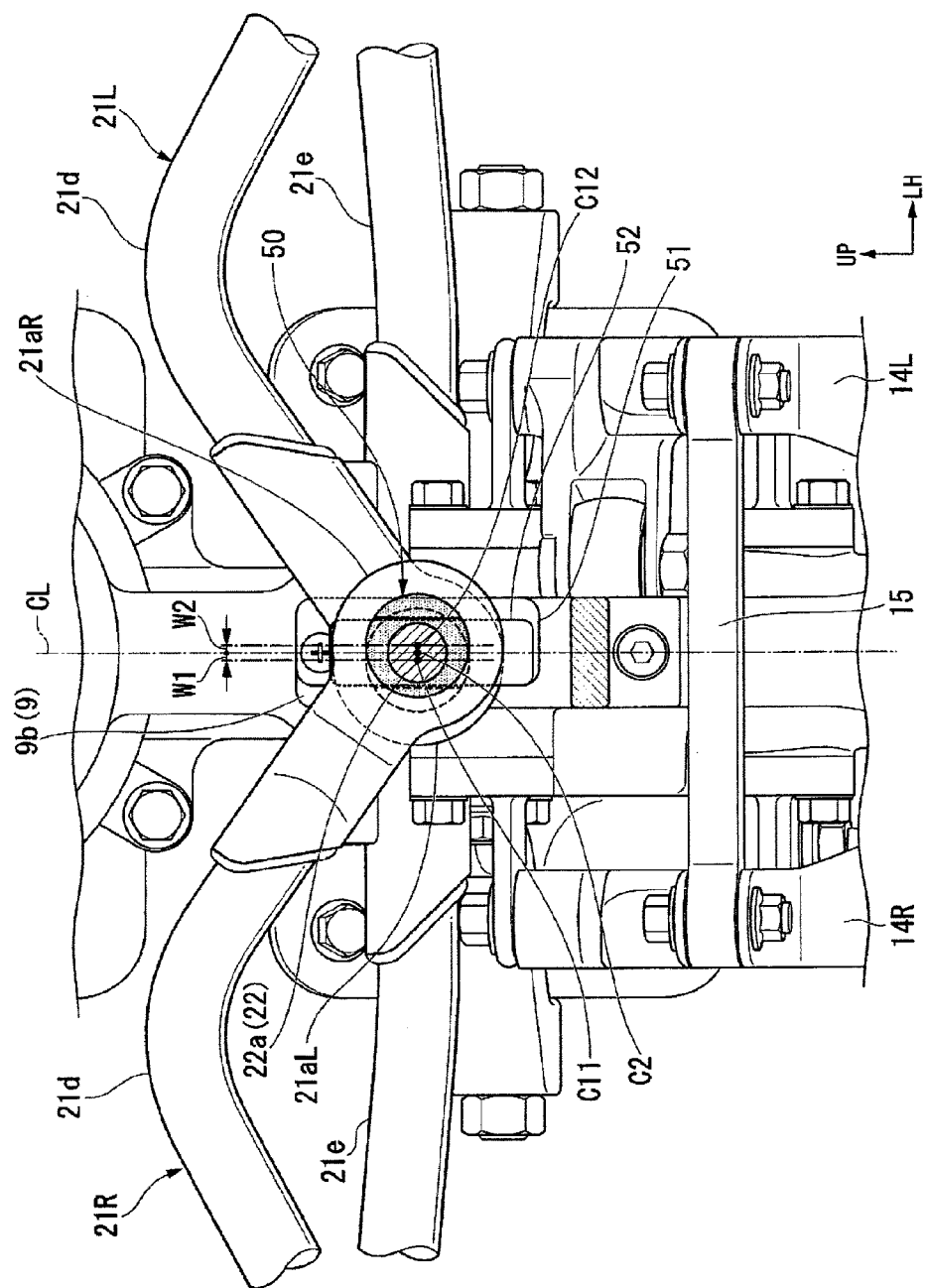


FIG. 12

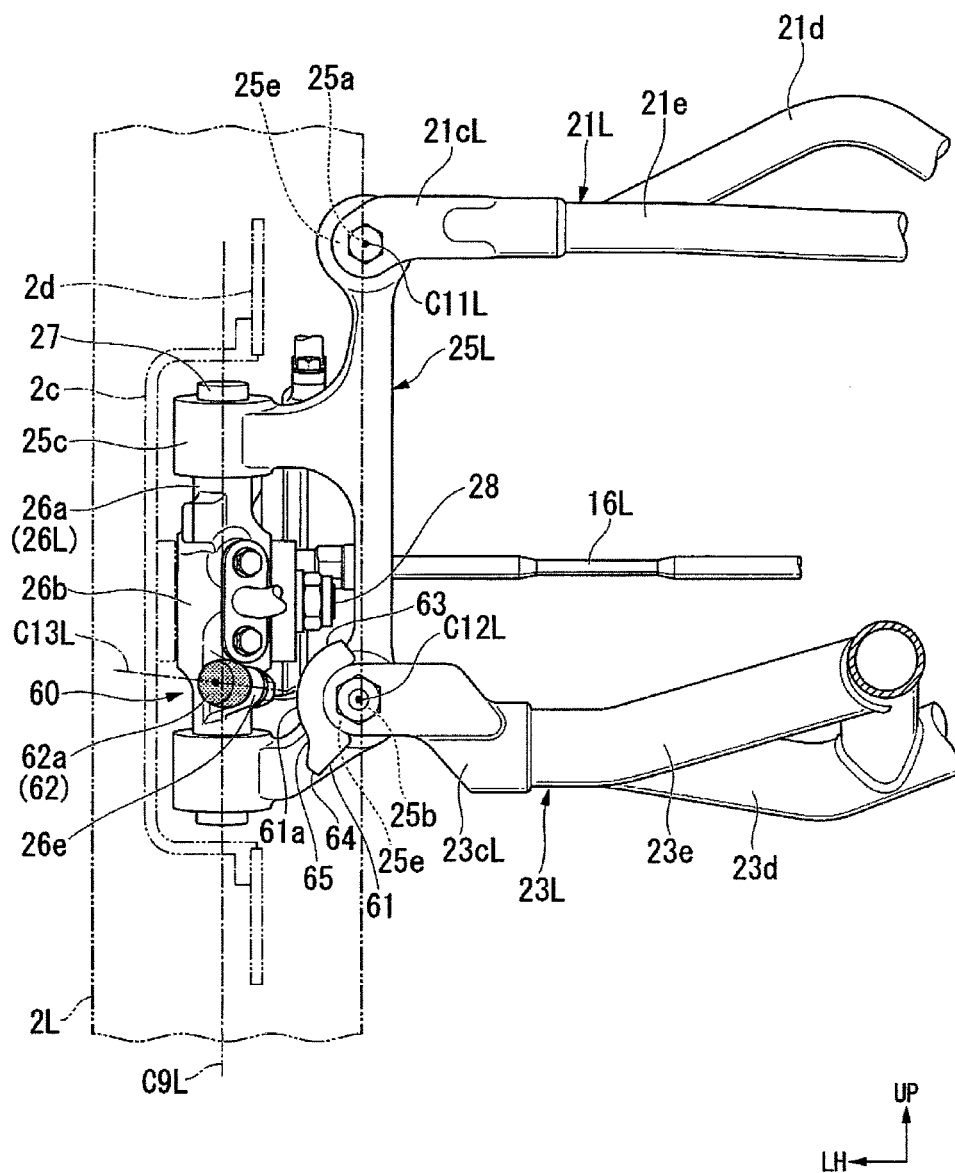


FIG. 13

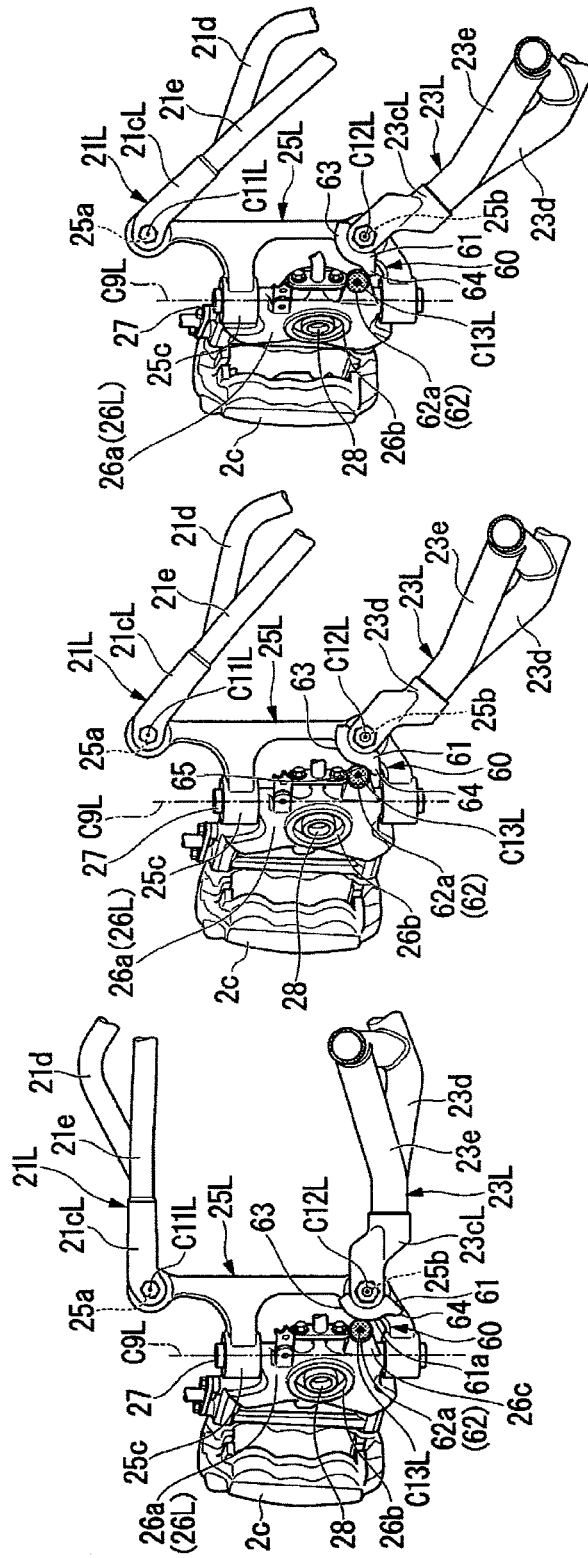


FIG. 14(a)

FIG. 14(b)

FIG. 14(c)

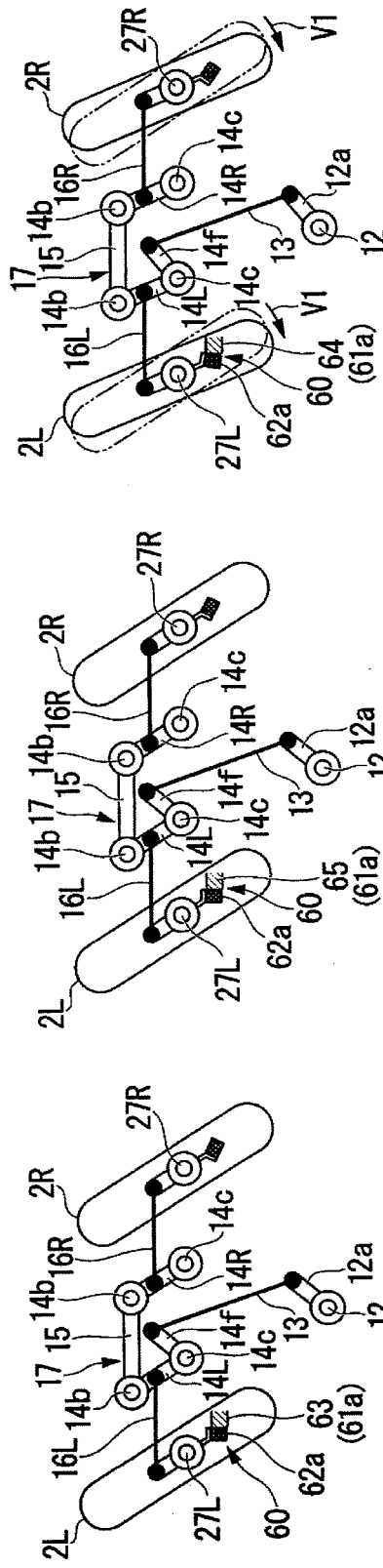


FIG. 15(a)

FIG. 15(b)

FIG. 15(c)

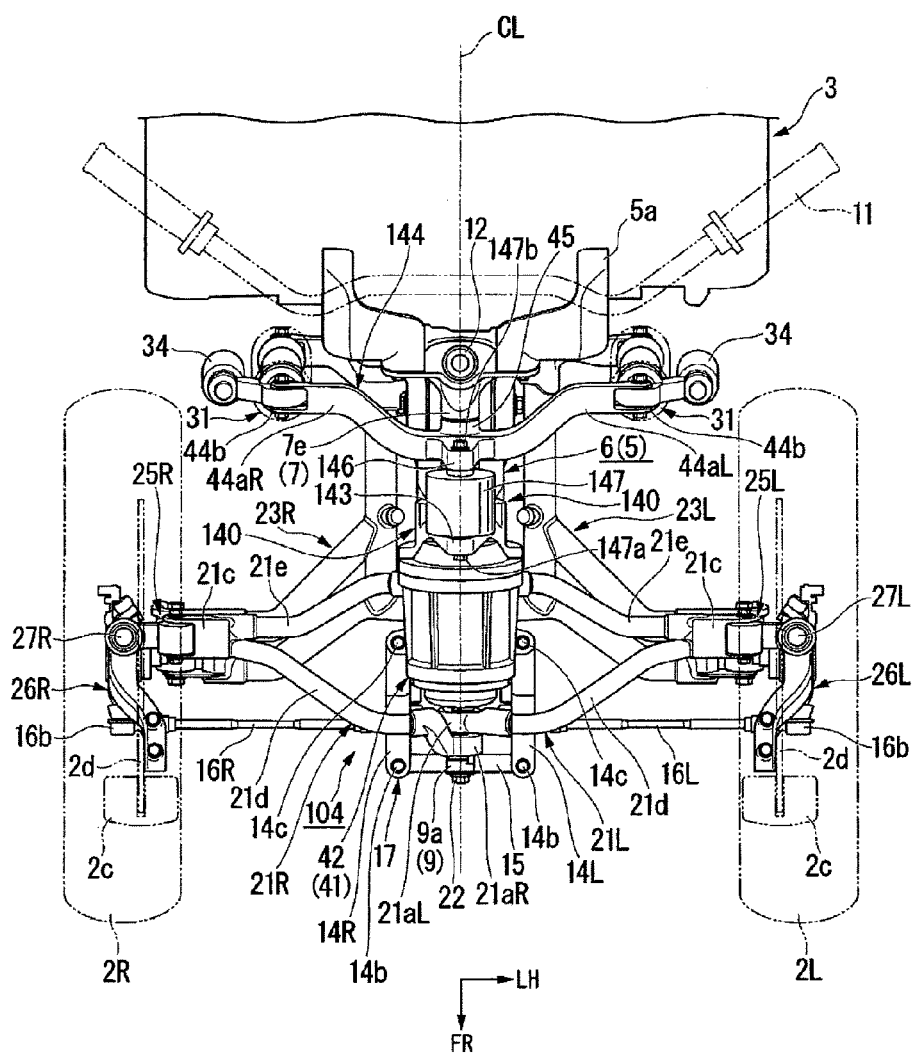


FIG. 16

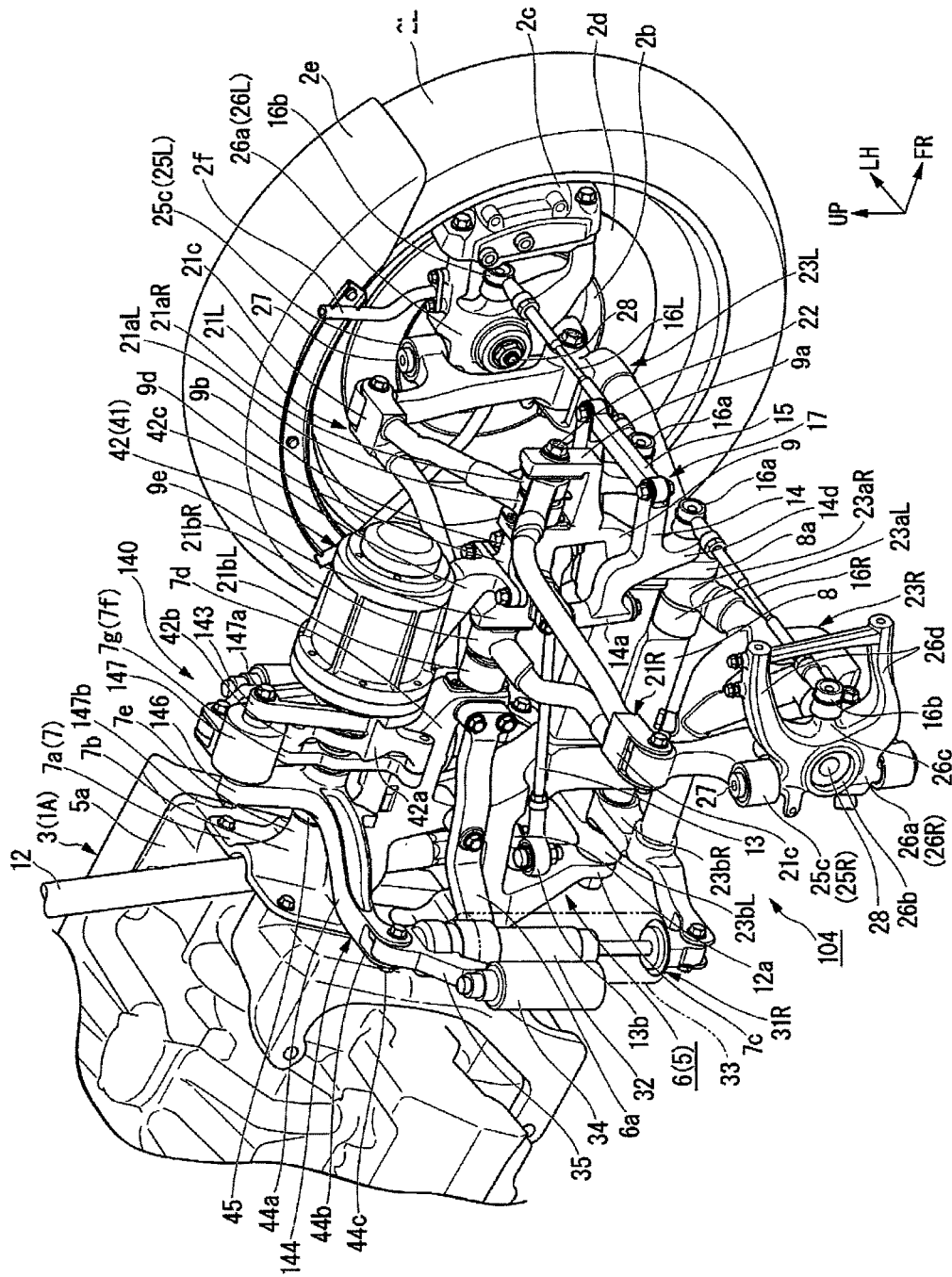


FIG. 17

ROLLING TYPE VEHICLE

CROSS-REFERENCE TO RELATED APPLICATIONS

[0001] The present application claims priority under 35 USC 119 to Japanese Patent Application No. 2015-024458 filed Feb. 10, 2015 the entire contents of which are hereby incorporated by reference.

BACKGROUND OF THE INVENTION

[0002] 1. Field of the Invention

[0003] The present invention relates to a rolling type vehicle.

[0004] 2. Description of Background Art

[0005] A rolling type vehicle is known that includes a pair of left and right front wheels wherein a vehicle body is capable of lateral swinging, or rolling. One rolling type vehicle is known that has an actuator for controlling the inclination angle (lean angle) of a vehicle body. See, for example, U.S. Pat. No. 8,123,240.

[0006] In the rolling type vehicle mentioned above, the actuator should be laid out in such a position so as not to interfere with arm members which support left and right front wheels, a suspension frame which supports the arm members, or the like. This point constitutes one of the causes which make it difficult to reduce the spacing between the left and right front wheels (vehicle width) of the rolling type vehicle.

SUMMARY AND OBJECTS OF THE INVENTION

[0007] Accordingly, it is an object of an embodiment of the present invention to make or keep small the spacing between left and right front wheels while providing an actuator for controlling the inclination angle of a vehicle body, in a rolling type vehicle which has a pair of left and right front wheels and in which a vehicle body is capable of rolling.

[0008] As a solution to the above problem, according to an embodiment of the present invention, there is provided a rolling type vehicle (1) having a pair of left and right front wheels (2L, 2R) and having a vehicle body (1A) capable of rolling. The rolling type vehicle (1) includes a pair of left and right arm members (21, 23) which are supported in a swingable manner by the vehicle body (1A) on inner sides in a transverse direction and which respectively support the pair of left and right front wheels (2L, 2R) on outer sides in the transverse direction, respectively. A shock absorber support arm (44) is supported by the vehicle body (1A) at a transversely central portion thereof and is connected to the pair of left and right arm members (21, 23) through shock absorber units (31) on outer sides in the transverse direction, respectively. An actuator (41) is capable of controlling the swinging of the shock absorber support arm (44). In the rolling type vehicle (1), the actuator (41) constitutes a front suspension frame body (5) of a closed structure together with a vehicle body side frame (6) which supports the left and right arm members (21, 23) and the shock absorber support arm (44) of the vehicle body (1A).

[0009] According to an embodiment of the present invention, the actuator (41) is disposed upwardly of the left and right arm members (21, 23) in a central area in the transverse direction.

[0010] According to an embodiment of the present invention, the pair of left and right arms (21, 23) each include an

upper arm (21) and a lower arm (23); the vehicle body side frame (6) includes an opening portion (6b) opening to an upper side; the actuator (41) is connected to the vehicle body side frame (6) so as to straddle and close the opening portion (6b) upwardly of the opening portion (6b); and the upper arms (21) are supported in the opening portion (6b).

[0011] According to an embodiment of the present invention, the upper arm (21) has an end portion supported by the vehicle body side frame (6), the end portion branched into a front base portion (21a) and a rear base portion (21b); and the rear base portions (21b) of the upper arms (21) are supported in the opening portion (6b).

[0012] According to an embodiment of the present invention, the actuator (41) has an output portion (41a) coaxial with a shaft support portion (45) of the shock absorber support arm (44).

[0013] According to an embodiment of the present invention, the actuator is configured as part of the front suspension frame body of a closed structure and is brought into lateral swinging, or rolling, together with the vehicle body. By this it is ensured that the actuator and the front suspension frame body do not interfere with each other at the time of rolling of the vehicle body. In addition, a swinging space for the front suspension frame body can be utilized as a swinging space for the actuator, so that interference thereof with the surrounding component parts can be inhibited. In addition, since the front suspension frame body is divided into the vehicle body side frame and the actuator, productivity and processability of the individual configurations can be enhanced. Further, by configuring the front suspension frame body in a closed loop form, a reduction in weight and enhancement of rigidity can be realized, and the spacing between the left and right front wheels (vehicle width) can be made or kept small by, for example, rendering the front suspension frame body compact.

[0014] According to an embodiment of the present invention, the actuator can be disposed at such a position as not to interfere with the left and right arm members. In addition, it is possible to enhance the degree of freedom in laying out the left and right arm members, thereby realizing a smaller vehicle width.

[0015] According to an embodiment of the present invention, the upper arms are supported in the upper opening portion which opens to the upper side. Therefore, the upper arms can be easily mounted or assembled onto the vehicle body side frame, so that workability is enhanced. In addition, since the actuator constitutes an upper part of the front suspension frame body of a closed loop form, the actuator can be disposed apart from and be restrained from interfering with the vehicle body side frame and the surrounding component parts. In addition, the actuator is disposed so as to straddle and close the opening portion upwardly of the opening portion and is connected to the vehicle body side frame. Therefore, both end portions of the actuator which are located on opposite sides of the opening portion can be connected to and firmly supported by the vehicle body side frame. Consequently, the actuator can be restrained from shaking and vibration.

[0016] According to an embodiment of the present invention, the actuator is supported on the vehicle body side frame at a position similar to those of the rear base portions of the upper arms. Owing to this configuration, the actuator is restrained from protruding forward. Thus, a compact front suspension frame body can be realized. In addition, the actua-

tor being heavy can be disposed closer to the center of the vehicle body, whereby mass concentration can be achieved.

[0017] According to an embodiment of the present invention, an output portion of the actuator and a shaft support portion of the shock absorber support arm can be connected coaxially with each other. Consequently, swinging of the shock absorber support arm can be controlled by the actuator while adopting a simple and compact mechanism.

[0018] Further scope of applicability of the present invention will become apparent from the detailed description given hereinafter. However, it should be understood that the detailed description and specific examples, while indicating preferred embodiments of the invention, are given by way of illustration only, since various changes and modifications within the spirit and scope of the invention will become apparent to those skilled in the art from this detailed description.

BRIEF DESCRIPTION OF THE DRAWINGS

[0019] The present invention will become more fully understood from the detailed description given hereinbelow and the accompanying drawings which are given by way of illustration only, and thus are not limitative of the present invention, and wherein:

[0020] FIG. 1 is a left side view of a vehicle body front portion of a two-front-wheeled saddle type vehicle in one embodiment of the present invention;

[0021] FIG. 2 is a right side view of a two-front-wheel suspension system of the saddle type vehicle in a state where a right front wheel has been removed;

[0022] FIG. 3 is a view along arrow III of FIG. 2 (a front view as viewed from an axial direction of upper and lower roll shafts);

[0023] FIG. 4 is a view along arrow IV of FIG. 2 (a top plan view as viewed from an axial direction of a steering shaft);

[0024] FIG. 5 is a view along arrow V of FIG. 2 (a bottom view as viewed from the axial direction of the steering shaft);

[0025] FIG. 6 is a perspective view of the two-front-wheel suspension system;

[0026] FIGS. 7(a), 7(b) and 7(c) illustrates a steering link mechanism of the two-front-wheel suspension system, wherein 7(a) depicts a state when a turning angle is 0 degrees, 7(b) depicts a state at the time of steering to the left, and 7(c) depicts a state at the time of steering to the right;

[0027] FIG. 8 is a view along an arrow corresponding to FIG. 3, showing a state where a vehicle body rolls to the right side;

[0028] FIG. 9 is a right side view of a front suspension frame body;

[0029] FIG. 10 is a view including a sectional view taken along line X-X of FIG. 2;

[0030] FIG. 11 is an exploded perspective view of left and right upper arms of the two-front-wheel suspension system;

[0031] FIG. 12 is an enlarged view of FIG. 3;

[0032] FIG. 13 is a view including a section along line XIII-XIII of FIG. 4 (a rear view as viewed from the axial direction of the upper and lower roll shafts);

[0033] FIGS. 14(a), 14(b) and 14(c) shows rear views of the two-front-wheel suspension system along the upper and lower roll shafts at the time of steering to the left, wherein 14(a) depicts a state when the vehicle body is upright, 14(b) depicts a state when the vehicle body rolls to the left (a state at the time of banking at a bank angle slightly shallower than

a full-bank state), and 14(c) depicts a state when the vehicle body rolls to the left (a substantially full-bank state);

[0034] FIGS. 15(a), 15(b) and 15(c) illustrates the steering link mechanism of the two-front-wheel suspension system at the time of steering to the left, wherein 15(a) depicts a state when the vehicle body is upright, 15(b) depicts a state when the vehicle body rolls to the left (a state at the time of banking at a bank angle slightly shallower than a full-bank state), and 15(c) depicts a state when the vehicle body rolls to the left (a substantially full-bank state);

[0035] FIG. 16 is a top plan view corresponding to FIG. 4, showing a two-front-wheel suspension system according to a modification of the embodiment as viewed from an axial direction of a steering shaft; and

[0036] FIG. 17 is a perspective view, corresponding to FIG. 6, of the two-front-wheel suspension system according to the modification.

DETAILED DESCRIPTION OF THE PREFERRED EMBODIMENTS

[0037] An embodiment of the present invention will be described below, referring to the drawings. It is to be noted that the directions such as forward, rearward, leftward and rightward directions in the following description are the same as those directions with reference to a vehicle described hereinbelow, unless otherwise specified. In addition, at appropriate locations in the drawings used in the following description, there are shown an arrow FR indicative of the front side of the vehicle, an arrow LH indicative of the left-hand side of the vehicle, and an arrow UP indicative of the upper side of the vehicle. In addition, line CL in the drawings is a longitudinally extending vehicle body center line.

[0038] FIG. 1 shows a vehicle body front portion of a saddle type vehicle 1 in the present embodiment. The saddle type vehicle 1 is a two-front-wheeled three-wheel rolling type vehicle which includes a pair of left and right front wheels (steered wheels) 2 in left-right symmetry at vehicle body front portions, and a rear wheel (not shown) as a single driving wheel at a vehicle body rear portion, and which is capable of lateral swinging (rolling) of the vehicle body with the left and right front wheels 2 in a set state. Symbol COW in the drawing indicates a cowling which covers a vehicle body front portion of the saddle type vehicle 1.

[0039] In the following, unless otherwise specified, description will be made of a configuration in a condition where the left and right front wheels 2 are grounded on a horizontal road surface R, the vehicle body is in a 1G condition in which a load corresponding to the vehicle weight is exerted on a two-front-wheel suspension system 4 (described later), the vehicle body is in an upright state with a roll angle of 0 degrees, and the left and right front wheels 2 are in a straight ahead state with a steering angle of 0 degrees. The configuration described below is in left-right symmetry about the center in the transverse direction, unless specified otherwise. In the present embodiment, the left-hand component of a configuration composed of a pair of left and right components may be denoted by a symbol attended by "L," and the right-hand component may be denoted by a symbol attended by "R" for distinguishing the components, and they may be denoted by only the symbol not attended by "L" or "R."

[0040] Referring to FIGS. 2, 3 and 6 in combination, the saddle type vehicle 1 has a configuration in which a front suspension frame body 5 supporting the two-front-wheel suspension system 4 is fixed to a front portion of, for example, a

horizontal opposed engine 3 mounted in a center of the vehicle body. On the front suspension frame body 5, a lower portion of a steering shaft 12 extending vertically in a center in the transverse direction (in a center in the vehicle width direction) is rotatably supported. A bar-type steering handle, or steering handlebar, 11 is mounted to an upper end portion of the steering shaft 12.

[0041] The steering shaft 12 has its center axis (steering axis) C1 disposed on a longitudinally extending vehicle body center line CL. The steering axis C1 is inclined so that its upper-side portion is located on the rear side with reference to the vertical direction in side view. To a lower end portion of the steering shaft 12, a base end portion of a bottom bracket 12a is fixed. To a tip portion of the bottom bracket 12a, a rear end portion of a link rod 13 extending in the longitudinal vehicle direction is connected. To a front end portion of the link rod 13, a steering link mechanism 17 is connected. To the steering link mechanism 17, left and right knuckle members 26L and 26R are connected through left and right tie rods 16L and 16R, respectively. On the left and right knuckle members 26L and 26R, the left and right front wheels 2L and 2R are rotatably supported, respectively. Rotation of the steering handlebar 11 and steering of the left and right front wheels 2L and 2R are interlocked with each other through the steering shaft 12, the link rod 13, the steering link mechanism 17, the left and right tie rods 16L and 16R and the left and right knuckle members 26L and 26R.

[0042] Referring to FIGS. 2, 3 and 6, the two-front-wheel suspension system 4 enables the vehicle body 1A inclusive of the front suspension frame body 5 and the engine 3 and the like to roll with the left and right front wheels 2L and 2R kept grounded, and enables the left and right front wheels 2L and 2R to similarly roll in accordance with the rolling of the vehicle body 1A. By contrast, the two-front-wheel suspension system 4 enables the left and right front wheels 2L and 2R to alternately move up and down with reference to the vehicle body 1A.

[0043] The two-front-wheel suspension system 4 is in a double wishbone form in which the left and right front wheels 2L and 2R are independently suspended, and in which outer link members 25 are supported through upper arms 21 and lower arms 23 on left and right sides of the front suspension frame body 5 extending forwardly of the steering shaft 12 in the center of the vehicle width direction. On the left and right outer link members 25L and 25R, the left and right knuckle members 26L and 26R and the front wheels 2L and 2R are supported in a steerable manner, respectively.

[0044] Those inner end portions of the left and right upper arms 21L and 21R which are located at the center in the vehicle width direction are supported on an upper portion of the front suspension frame body 5 in a vertically swingable manner through an upper roll shaft 22 extending substantially in the longitudinal direction of the vehicle. Those inner end portions of the left and right lower arms 23L and 23R which are located at the center in the vehicle width direction are supported on a lower portion of the front suspension frame body 5 in a vertically swingable manner through a lower roll shaft 24 parallel to the upper roll shaft 22. Axes C2 and C3 of the upper and lower roll shafts 22 and 24 are disposed in a forwardly upwardly inclined posture with a smaller inclination angle with reference to the horizontal direction as compared with a direction which is orthogonal to the axis C1 of the steering shaft 12 in side view.

[0045] On outer end portions of the left and right upper arms 21L and 21R, upper end portions of the left and right outer link members 25L and 25R are supported in a swingable manner through an upper outer swing shaft 25a parallel to the upper and lower roll shafts 22 and 24. On outer end portions of the left and right lower arms 23L and 23R, lower end portions of the left and right outer link members 25L and 25R are supported in a swingable manner through a lower outer swing shaft 25b parallel to the upper and lower roll shafts 22 and 24.

[0046] As viewed along the axial direction of the upper and lower roll shafts 22 and 24, all the left and right upper arms 21L and 21R, the left and right lower arms 23L and 23R and the left and right outer link members 25L and 25R are disposed in the forms of parallel links on the left and right sides of the vehicle body, respectively. This configuration ensures that when the left and right upper arms 21L and 21R and the left and right lower arms 23L and 23R swing vertically, the left and right outer link members 25L and 25R, the left and right knuckle members 26L and 26R and the left and right front wheels 2L and 2R are moved up and down in a substantially parallel manner (see FIG. 8).

[0047] In addition, as viewed along the axial direction of the upper and lower roll shafts 22 and 24, the left and right tie rods 16L and 16R are also provided to be substantially parallel to and equal in length to the left and right upper arms 21L and 21R and the left and right lower arms 23L and 23R. These members are disposed in the forms of parallel links on the left and right sides of the vehicle body, respectively. This configuration ensures that when the left and right upper arms 21L and 21R and the left and right lower arms 23L and 23R swing up and down, the left and right tie rods 16L and 16R also swing up and down substantially in parallel to the left and right upper arms 21L and 21R and the left and right lower arms 23L and 23R, thereby suppressing the influence on the steering angles of the left and right front wheels 2L and 2R.

[0048] Left and right shock absorber units 31L and 31R which bear loads on the left and right front wheels 2L and 2R respectively extend substantially vertically, on the upper side of rear portions of the left and right lower arms 23L and 23R. The left and right shock absorber units 31L and 31R have their lower end portions connected respectively to the left and right lower arms 23L and 23R, and have their upper end portions connected respectively to left and right end portions of a shock absorber support arm 44 which extends substantially in the transverse direction. The shock absorber support arm 44 has a configuration wherein its base portion 45 (shaft support portion) at the center in the transverse direction is supported on the front suspension frame body 5 in a swingable manner through a shock absorber swing shaft 45a parallel to the upper and lower roll shafts 22 and 24.

[0049] Left and right arm portions 44aL and 44aR integrally possessed by the shock absorber support arm 44 are disposed in the forms of parallel links on the left and right sides of the vehicle body together with the left and right lower arms 23L and 23R and the left and right shock absorber units 31L and 31R.

[0050] Referring to FIGS. 2, 6 and 9, the front suspension frame body 5 is fixed to a front portion of the engine 3 through a mount frame 5a. The front suspension frame body 5 includes a frame main body 6 which is disposed at the center in the vehicle width direction and which has a gate-like shape opening upward in side view, and a pair of left and right reinforcement beams 6a arranged between left and right out-

side portions of the frame main body **5** and the mount frame **5a**. The front suspension frame body **5** is provided to be forwardly upwardly inclined as a whole. The frame main body **6** and the left and right reinforcement beams **6a** are provided in an integral fashion by forming integrally from a metallic material or by joining a plurality of members by welding, fastening or the like. The inclination of the front suspension frame body **5** is such that the front suspension frame body **5** is substantially parallel to the roll shafts **22** and **24** of the upper arms **21** and the lower arms **23**.

[0051] The frame main body **6** is provided in a flat shape suppressed in a transverse dimension. The frame main body **6** includes a rear side portion **7**, a lower side portion **8** and a front side portion **9** which form the gate-like shape. The upper opening portion of the gate-like shape of the frame main body **6** is indicated by symbol **6b**.

[0052] The rear side portion **7** includes a mount connection portion **7a** connected and fixed to a substantially vertical front surface portion of the mount frame **5a**; a shaft support portion **7b** for supporting a lower portion of the steering shaft **12** for rotation about the steering axis **C1** and a lower arm rear support portion **7c** for supporting rear base portions **23bL** and **23bR** of the left and right lower arms **23L** and **23R** of the two-front-wheel suspension system **4** for vertical swinging; a forward extending portion **7d** extending to the front side of the shaft support portion **7b**. A shock absorber arm support portion **7e** is provided on the upper side of the front extending portion **7d** with an actuator rear end support portion **7f** provided on the front side of the shock absorber arm support portion **7e**.

[0053] The lower arm rear support portion **7c** has a gate-like shape opening downward in side view for supporting the rear base portions **23bL** and **23bR** of the left and right lower arms **23L** and **23R** on the lower side thereof. The rear base portions **23bL** and **23bR** of the left and right lower arms **23L** and **23R** are disposed to be aligned in a front-rear relationship. The rear base portions **23bL** and **23bR** are supported by the lower arm rear support portion **7c** through a lower roll shaft **24b** which is forwardly upwardly inclined. In a space on the upper side of the lower arm rear support portion **7c**, there are disposed a lower end portion of the steering shaft **12** which penetrates the shaft support portion **7b** downward and the bottom bracket **12a**.

[0054] The forward extending portion **7d** extends substantially in parallel to the upper and lower roll shafts **22** and **24**. The shock absorber arm support portion **7e** over the forward extending portion **7d** has a gate-like shape opening to the upper side in a side view. The base portion **45** at the center in the transverse direction of the shock absorber support arm **44** extending in the transverse direction is disposed on the upper side of the shock absorber arm support portion **7e**. The base portion **45** of the shock absorber support arm **44** is supported by the shock absorber arm support portion **7e** of the frame main body **6** through the shock absorber swing shaft **45a** which is forwardly upwardly inclined to be parallel to the upper and lower roll shafts **22** and **24**. Front end portions of the left and right reinforcement beams **6a** are connected and fixed to left and right outer sides of a front end portion of the forward extending portion **7d** by fastening or the like. Rear end portions of the left and right reinforcement beams **6a** are connected and fixed to left and right outer sides of the rear side portion **7** in the vicinity of the mount frame **5a** by fastening or the like.

[0055] To the actuator rear end support portion **7f** on the front side of the shock absorber arm support portion **7e**, a rear end portion **42a** of a housing **42** of an actuator **41** is connected and fixed. The housing **42** of the actuator **41** has a hollow cylindrical shape parallel to and coaxial with the shock absorber swing shaft **45a**. The housing **42** is provided in an integral form by, for example, integrally forming from a metallic material or joining a plurality of members by welding, fastening or the like. At the outer circumference of the rear end portion **42a** of the housing **42**, a plurality of rear end mount portions **42b** are integrally provided. At the outer circumference of the actuator rear end support portion **7f** of the frame main body **6**, a plurality of frame-side mount portions **7g** corresponding to the rear end mount portions **42b** of the housing **42** are integrally provided. To each of the frame-side mount portions **7g**, the corresponding rear end mount portion **42b** is connected and fixed by fastening or the like.

[0056] The lower side portion **8** of the frame main body **6** extend obliquely forwardly upwardly in parallel to the upper and lower roll shafts **22** and **24**. On the lower side of a front end portion of the lower side portion **8**, there is provided a lower arm front support portion **8a** wherein front base portions **23aL** and **23aR** of the left and right lower arms **23L** and **23R** are supported so that they can swing up and down. The lower arm front support portion **8a** has a gate-like shape opening to the lower side in side view, and supports the front base portions **23aL** and **23aR** of the left and right lower arms **23L** and **23R** in the inside thereof.

[0057] The front base portions **23aL** and **23aR** of the left and right lower arms **23L** and **23R** are disposed to be aligned in a front-rear relationship. The front base portions **23aL** and **23aR** are supported by the lower arm front support portion **8a** through a lower roll shaft **24a** which is inclined forwardly upward. The lower roll shaft **24a** is coaxial with the lower roll shaft **24b** of the lower arm rear support portion **7c**, and they are configured as the integral lower roll shaft **24** from, for example, an elongate shaft penetrating a lower portion of the frame main body **6** in the longitudinal vehicle direction. It is to be noted that the lower roll shafts **24a** and **24b** may be formed as separate bodies from each other.

[0058] The front side portion **9** of the frame main body **6** includes an upper arm front support portion **9a** which is provided at the front side of an upper end portion of the front side portion **9** and which supports front base portions **21aL** and **21aR** of the left and right upper arms **21L** and **21R** in a vertically swingable manner with a rearward extending portion **9b** extending to the rear side of the upper arm front support portion **9a**. A link support portion **9c** is provided at a lower portion of the rearward extending portion **9b** with an actuator front lower support portion **9d** which is provided at an upper portion of the rearward extending portion **9b** and which supports the lower side of a front portion of the housing **42** of the actuator **41**.

[0059] At the lower side of the front portion of the housing **42**, a front lower mount portion **42c** is integrally provided. The front lower mount portion **42c** is connected and fixed to the actuator front lower support portion **9d** of the frame main body **6** by fastening or the like. The upper opening portion **6b** of the frame main body **6** having the gate-like shape in side view is closed up by the housing **42** of the actuator **41**, whereby the front suspension frame body **5** having a closed loop structure which is closed in side view is configured.

More specifically, the housing 42 of the actuator 41 functions also as part of the front suspension frame body 5 of the vehicle body 1A.

[0060] A rear end portion of the rearward extending portion 9b, together with a front end portion of the forward extending portion 7d of the rear side portion 7, constitutes an upper arm rear support portion 9e which supports rear base portions 21bL and 21bR of the left and right upper arms 21L and 21R in a vertically swingable manner.

[0061] The rear base portions 21bL and 21bR of the left and right upper arms 21L and 21R are disposed to be aligned in a front-rear relationship. The rear base portions 21bL and 21bR are supported by the upper arm rear support portion 9e through an upper roll shaft 22b which is inclined forwardly upward. The front base portions 21aL and 21aR of the left and right upper arms 21L and 21R are disposed to be aligned in a front-rear relationship. The front base portions 21aL and 21aR are supported by the upper arm front support portion 9a through an upper roll shaft 22a which is inclined forwardly upward. The upper roll shafts 22a and 22b are coaxial with each other, and are configured as the integral upper roll shaft 22 from, for example, an elongate shaft which penetrates an upper portion of the frame main body 6 in the front-rear direction. It is to be noted that the upper roll shafts 22a and 22b may be formed as separate bodies from each other.

[0062] Onto the upper roll shaft 22 having the center axis C2 disposed on the longitudinally extending vehicle body center line CL, the front base portions 21aL and 21aR and the rear base portions 21bL and 21bR of the left and right upper arms 21L and 21R are individually supported through eccentric collars (not shown). The left and right upper arms 21L and 21R swing about bearings externally fitted to the eccentric collars, whereby the swinging centers of the left and right upper arms 21L and 21R can be a little offset in the vehicle width direction from the axial center of the upper roll shaft 22. More specifically, the swinging center of the left upper arm 21L is offset to the right side of the axis C2 of the upper roll shaft 22, whereas the swinging center of the right upper arm 21R is offset to the left side of the axis C2 of the upper roll shaft 22. It is to be noted that the swinging center axis C3 of the left and right lower arms 23L and 23R (corresponding to the center axis C3 of the lower roll shaft 24) is disposed on the longitudinally extending vehicle body center line CL.

[0063] Referring to FIGS. 2, 4 and 6, the actuator 41 is an electric motor or fluidic apparatus which generates a torque about a center axis C7 of the housing 42. The actuator 41 has, at a rear portion thereof, a front swing arm 43 which protrudes obliquely to a left upper rear side and which swings about the axis C7. A driving shaft (output portion) 41a is provided sharing the axis C7 in the actuator 41. The front swing arm 43 is fixed to the driving shaft 41a and swings about the axis C7. The front swing arm 43 and a rear swing arm 46 of the shock absorber support arm 44 are spaced from each other along the axial direction of the actuator 41. At a connection portion 40 between the front swing arm 43 and the rear swing arm 46, there is provided a connection device 47 (load detection unit) which enables the front and rear swing arms 43 and 46 to swing as one body. The connection device 47 functions also as a load detection unit which detects a load transmitted between the front and rear swing arms 43 and 46.

[0064] The connection device 47 has a hollow cylindrical shape. A center axis C10 of the connection device 47 is disposed to be orthogonal to the shock absorber swing shaft 45a and be along the vehicle width direction. The connection

device 47 incorporates a load sensor for electrical detection of a load (torque) about the shock absorber swing shaft 45a which is generated between the front and rear swing arms 43 and 46. A detected value obtained by the detection is inputted to an ECU (Electronic Control Unit) 49 as a control unit for controlling the operation of the actuator 41. The ECU 49 controls the actuator 41, on the basis of the results of the detection by the connection device 47 functioning as the load detection unit.

[0065] The connection device 47 is connected so as to be rotatable relative to the front and rear swing arms 43 and 46. More specifically, the connection portion 40 is provided with a connection link 48 for connection between left and right outer end portions of the connection device 47 and tip portions 43b and 46b of the front and rear swing arms 43 and 46. The connection link 48, which extends along the vehicle width direction, is provided at left and right end portions thereof with left and right spherical bearings 48a and 48b as connection portions for connection with the tip portions 43b and 46b of the front and rear swing arms 43 and 46, respectively. Through the left spherical bearing 48a, the left end portion of the connection link 48 is connected to the tip portion 43b of the front swing arm 43 by a bolt 47a inserted from the rear side. More specifically, through the right spherical bearing 48b, the right end portion of the connection link 48 is connected to the tip portion 46b of the rear swing arm 46 by a bolt 47b inserted from the front side.

[0066] The front swing arm 43 extends by protruding obliquely toward a left upper rear side from a base portion 43a exposed to a shaft support portion of the driving shaft 41a, to reach the tip portion 43b which is connected to the left end portion of the connection link 48 through the left spherical bearing 48a. The rear swing arm 46 extends by protruding obliquely toward a right upper front side from a base portion 46a exposed to the shaft support portion 45 of the shock absorber swing shaft 45a, to reach the tip portion 46b which is connected to the right end portion of the connection link 48 through the right spherical bearing 48b.

[0067] As viewed from an axis C8 about which the shock absorber support arm 44 can swing, the base portion 43a of the front swing arm 43 is opposed to the base portion 46a of the rear swing arm 46, with a spacing therebetween in the direction along the axis C8.

[0068] Referring to FIG. 3, as the actuator 41 operates, the front swing arm 43 describes a circular arc-shaped trajectory KC centered on the swinging center (axis C7) of the front swing arm 43 of the actuator 41. As viewed from the axis C8, the tip portion 43b of the front swing arm 43 (the connection portion between the connection device 47 and the front swing arm 43) is positionally deviated from the tip portion 46b of the rear swing arm 46 (the connection portion between the connection device 47 and the rear swing arm 46) in a direction along the trajectory KC. More specifically, as viewed from the axis C8, the tip portion 43b of the front swing arm 43 is deviated to the left side from the longitudinally extending vehicle body center line CL, in the direction along the trajectory KC. The tip portion 46b of the rear swing arm 46 is deviated to the right side from the longitudinally extending vehicle body center line CL, in the direction along the trajectory KC.

[0069] The load about the shock absorber swing shaft 45a which is generated between the front and rear swing arms 43 and 46 is generated according to an operation resistance (torque) of the front swing arm 43 when the shock absorber

support arm 44 is going to swing in relation to the actuator 41 supported on the vehicle body side. More specifically, when the vehicle body swings to the left and right (rolls), a load about the shock absorber swing shaft 45a is generated between the front and rear swing arms 43 and 46 in accordance with the operation resistance of the front swing arm 43. The ECU 49 controls the driving of the actuator 41 according to a detected value of the load. The ECU 49 can control the actuator 41 so as to reduce at least the load inputted from the rear swing arm 46 to the front swing arm 43, namely, the load inputted from the shock absorber support arm 44 to the actuator 41, of the load transmitted between the front and rear swing arms 43 and 46.

[0070] For example, from a detected value supplied from an inclination sensor (acceleration sensor) provided on the vehicle body, the ECU 49 detects a moment in a falling direction and a rising direction which acts on the vehicle body, and controls the driving of the actuator 41 so that the moment will not become excessively great.

[0071] It is to be noted that the ECU 49 may be so configured that, for example, when the saddle type vehicle 1 is in a stopped state or a low vehicle speed state, the ECU 49 controls the driving of the actuator 41 so as to maximize the resistance to rolling of the vehicle body, and when the saddle type vehicle 1 is in a middle or high vehicle speed state, the ECU 49 controls the driving of the actuator 41 so as to weaken the resistance to rolling of the vehicle body.

[0072] Referring to FIGS. 4 and 6, the upper arm 21 integrally includes the front and rear base portions 21a and 21b which are rotatably supported on upper portions of the frame main body 6; a link upper support portion 21c which rotatably supports an upper end portion of the outer link member 25 at a transversely outer end portion of the upper arm 21; a front arm body 21d arranged between the front base portion 21a and the link upper support portion 21c; and a rear arm body 21e arranged between the rear base portion 21b and a link upper member.

[0073] The front and rear base portions 21a and 21b are each formed in a hollow cylindrical shape parallel to the upper roll shaft 22. The upper roll shaft 22 is disposed to extend through the inside of the front and rear base portions 21a and 21b. In the present embodiment, the front and rear base portions 21aL and 21bL of the left upper arm 21L are aligned with the front and rear base portions 21aR and 21bR of the right upper arm 21R, so as to overlap with the latter from the rear side, and these base portions are supported by the frame main body 6 through the upper roll shaft 22. In other words, as viewed in the axial direction of the upper roll shaft 22 (as viewed from the direction along the axis C2), the front and rear base portions 21aL and 21bL of the left upper arm 21L and the front and rear base portions 21aR and 21bR of the right upper arm 21R overlap with each other.

[0074] The left and right upper arms 21L and 21R are so configured so that the front and rear base portions 21a and 21b on the left side differ from those on the right side in front-rear-directional position, but that the link upper support portions 21c on the left and right sides are the same in front-rear-directional position. For this reason, the left and right upper arms 21L and 21R are formed in left-right asymmetry by making the front and rear arm bodies 21d and 21e different in a bent shape or the like.

[0075] Referring to FIGS. 5 and 6, the lower arm 23 integrally includes the front and rear base portions 23a and 23b which are rotatably supported on lower portions of the frame

main body 6; a link lower support portion 23c which rotatably supports a lower end portion of the outer link member 25 at a transversely outer end portion on the arm's front side; a front arm body 23d arranged between the front base portion 23a and the link lower support portion 23c; and a rear arm body 23e arranged between the rear base portion 23b and a link lower member. The rear arm body 23e includes a short arm 23e1 extending outwardly in the vehicle width direction from the rear base portion 23b; a longitudinal beam 23e2 arranged between a front end portion of the short arm 23e1 and an intermediate portion of the front arm body 23d; and an inclined beam 23e3 arranged between an intermediate portion of the longitudinal beam 23e2 and the link lower support portion 23c. On the outer side of the short arm 23e1 in the vehicle width direction, a shock absorber lower support arm 23e4 is provided in the manner of extending the short arm 23e1. More specifically, a rear end portion of the longitudinal beam 23e2 is connected to an intermediate portion of an arm body composed of the short arm 23e1 and the shock absorber lower support arm 23e4. A tip portion of the shock absorber lower support arm 23e4 is a shock absorber lower support portion 23e5. The longitudinal beams 23e2 form a closed loop together with the frame main body 6 (see FIG. 5), whereby the rigidity of the lower arm 23 in the transverse direction of the vehicle can be enhanced.

[0076] The front and rear base portions 23a and 23b are each formed in a hollow cylindrical shape parallel to and coaxial with the lower roll shaft 24. The lower roll shaft 24 is disposed to extend through the inside of the front and rear base portions 23a and 23b. In the present embodiment, the front and rear base portions 23aL and 23bL of the left lower arm 23L are aligned with the front and rear base portions 23aR and 23bR of the right lower arm 23R, so as to overlap with the latter from the rear side, and these base portions are supported by the frame main body 6 through the lower roll shaft 24. More specifically, as viewed in the axial direction of the lower roll shaft 24 (as viewed from the direction along the axis C3), the front and rear base portions 23aL and 23bL of the left lower arm 23L and the front and rear base portions 23aR and 23bR of the right lower arm 23R overlap with each other.

[0077] The left and right lower arms 23L and 23R are so configured that the front and rear base portions 23a and 23b on the left side differ from those on the right side in longitudinal-directional position, but that the link lower support portions 23c and the shock absorber lower support portions 23e5 on the left and right sides are the same in longitudinal-directional position. For this reason, the left and right lower arms 23L and 23R are formed in left-right asymmetry by making the front and rear arm bodies 23d and 23e different in a bent shape or the like.

[0078] Referring to FIG. 3, the distance from an axle center C5 of the front wheels 2L and 2R to transversely outer end portions 21cL and 21cR of the left and right upper arms 21L and 21R (the link upper support portions 21c which rotatably support the upper end portions of the outer link members 25) is denoted by symbol L1. The distance from the axle center C5 to transversely outer end portions 23cL and 23cR of the left and right lower arms 23L and 23R (the link lower support portions 23c which rotatably support the lower end portions of the outer link members 25) is denoted by symbol L2. The distance L1 means the distance from the axle center C5 to the centers of the upper outer swing shafts 25a at the transversely outer end portions 21cL and 21cR of the left and right upper

arms **21L** and **21R**, as viewed in the axial direction of the upper and lower roll shafts **22** and **24** (as viewed in a direction along the axes **C2** and **C3**). The distance **L2** means the distance from the axle center **C5** to the centers of the lower outer swing shafts **25b** at the transversely outer end portions **23cL** and **23cR** of the left and right lower arms **23L** and **23R**, as viewed in the axial direction of the upper and lower roll shafts **22** and **24**.

[0079] In the present embodiment, the distance **L2** is smaller than the distance **L1** ($L2 < L1$). It is to be noted that the distance **L2** may be greater than the distance **L1**. In other words, it is sufficient for the distance **L1** and the distance **L2** to be different from each other.

[0080] Referring to FIGS. **10** to **12**, in the present embodiment, as viewed in the axial direction of the upper and lower roll shafts **22** and **24**, a center axis **C11** of the front and rear base portions **21aL** and **21bL** of the left upper arm **21L** (the swinging center axis of the left upper arm **21L**) and a center axis **C12** of the front and rear base portions **21aR** and **21bR** of the right upper arm **21R** (the swinging center axis of the right upper arm **21R**) are out of alignment with each other. More specifically, as viewed in the axial direction of the upper and lower roll shafts **22** and **24**, the center axis **C11** of the front and rear base portions **21aL** and **21bL** of the left upper arm **21L** is disposed on the right side of the longitudinally extending vehicle body center line **CL**, whereas the center axis **C12** of the front and rear base portions **21aR** and **21bR** of the right upper arm **21R** is disposed on the left side of the longitudinally extending vehicle body center line **CL**.

[0081] It is to be noted that in the case where the distance **L2** is greater than the distance **L1**, a center axis of the front and rear base portions **23aL** and **23bL** of the left lower arm **23L** and a center axis of the front and rear base portions **23aR** and **23bR** of the right lower arm **23R** may be out of alignment with each other, as viewed in the axial direction of the upper and lower roll shafts **22** and **24**. More specifically, of the left and right upper arms **21L** and **21R** and the left and right lower arms **23L** and **23R**, those corresponding to the greater one of the distances **L1** and **L2** may have their swinging center axes out of alignment with each other, as viewed in the axial direction of the upper and lower roll shafts **22** and **24**.

[0082] The front and rear base portions **21aL** and **21bL** of the left upper arm **21L** and the front and rear base portions **21aR** and **21bR** of the right upper arm **21R** are supported by eccentric collars **50** fitted to the same upper roll shaft **22**.

[0083] A support structure for the front base portion **21aL** of the left upper arm **21L** and the front base portion **21aR** of the right upper arm **21R**, of the front and rear base portions **21aL** and **21bL** of the left upper arm **21L** and the front and rear base portions **21aR** and **21bR** of the right upper arm **21R**, will be described below referring to FIGS. **10** to **12**. It is to be noted that a support structure for the rear base portion **21bL** of the left upper arm **21L** and the rear base portion **21bR** of the right upper arm **21R** is the same as the support structure for the front base portion **21aL** of the left upper arm **21L** and the front base portion **21aR** of the right upper arm **21R**. Therefore, a detailed description thereof is omitted.

[0084] The front base portions **21aL** and **21aR** of the left and right upper arms **21L** and **21R** extend in parallel to the axis **C2** of the upper roll shaft **22**, and have hollow cylindrical shapes centered on the center axes **C11** and **C12**, respectively. Outer circumference portions of the front base portions **21aL** and **21aR** of the left and right upper arms **21L** and **21R** are integrally connected to transversely inner ends of the left and

right front arm bodies **21d** which extend along the vehicle width direction. The left and right front arm bodies **21d** are hollow.

[0085] Referring to FIG. **10**, a length **S1** of the front base portions **21aL** and **21aR** of the left and right upper arms **21L** and **21R** extends along the axis **C2** and a length **S2** (outside diameter) of the left and right front arm bodies **21d** extends along the axis **C2**. In the left and right upper arms **21L** and **21R**, the length **S1** values of the left and right front base portions **21aL** and **21aR** are approximately equal, and the length **S2** values of the left and right front arm bodies **21d** are also approximately equal. In the present embodiment, the length **S1** of the front base portions **21aL** and **21aR** is greater than the length **S2** of the front arm bodies **21d** ($S1 > S2$). By this configuration, support rigidity of the left and right upper arms **21L** and **21R** with respect to the upper roll shaft **22a** can be enhanced, as compared with the case where the length **S1** of the front base portions **21aL** and **21aR** is equal to or smaller than the length **S2** of the front arm bodies **21d**.

[0086] The front base portions **21aL** and **21aR** of the left and right upper arms **21L** and **21R** are formed with circular insertion holes **21h** which are opening in a direction along the axis **C2** and which are centered on the center axes **C11** and **C12**, respectively.

[0087] Front and rear plates **51** are disposed at the front of the front base portion **21aR** of the right upper arm **21R** and at the rear of the front base portion **21aL** of the left upper arm **21L**. An intermediate plate **52** is disposed between a rear portion of the front base portion **21aR** of the right upper arm **21R** and a front portion of the front base portion **21aL** of the left upper arm **21L**. Each of the plates **51** and **52** is formed in a plate-like form which has a rectangular shape elongated in a direction orthogonal to the axis **C2** (in a vertical direction as viewed in the axial direction of the upper roll shaft **22** as depicted in FIG. **12**) and which has a thickness in the direction along the axis **C2**.

[0088] The plates **51** and **52** are formed therein with circular insertion holes **51h** and **52h** which are opening in the direction along the axis **C2** and which are centered on the axis **C2**. The insertion hole **51h** in the front plate **51** is formed in a vertically intermediate portion of a plate main body on the left side with respect to the center in the transverse direction. The insertion hole **52h** in the intermediate plate **52** is formed in a vertically intermediate portion of a plate main body in the center in the transverse direction. The insertion hole **51h** in the rear plate **51** is formed in a vertically intermediate portion of a plate main body on the right side with respect to the center in the transverse direction.

[0089] The front and rear plates **51** are formed respectively with upper and lower insertion holes **51i** for fixation to the upper arm front support portion **9a**. The upper and lower insertion holes **51i** are vertically spaced by a predetermined distance from the insertion hole **51h** for insertion of the upper roll shaft **22a**, are opening in the direction parallel to the axis **C2**, and have a circular shape smaller than that of the insertion hole **51h**.

[0090] The front and rear plates **51** are fixed to the upper arm front support portion **9a** by a bolt or the like extending through the insertion hole **51i** from the rear side or front side along the axis **C2**. A bolt mounting portion of each of the front and rear plates **51** is formed with spot facing (not shown). For example, the depth of the spot facing (the maximum depth in the normal direction to a major surface of each of the front and rear plates **51**) is so sized that when fixing the front and rear

plates **51** to the upper arm front support portion **9a** by a bolt or the like, the bolt head does not protrude from the major surface of each of the front and rear plates **51**.

[0091] The support structure for the front base portion **21aL** of the left upper arm **21L** and the front base portion **21aR** of the right upper arm **21R** is as follows. In a state in which the front base portions **21aL** and **21aR** of the left and right upper arms **21L** and **21R** are disposed to be aligned in a front-rear relationship between a front portion and a rear portion of the upper arm front support portion **9a**, the upper roll shaft **22a** (bolt) is engaged with and fastened to a nut (not shown) through an insertion hole **9h** in the upper arm front support portion **9a** and the inner circumferences of the front base portions **21aL** and **21aR** of the left and right upper arms **21L** and **21R**.

[0092] On the outer circumference of the upper roll shaft **22a**, there are provided, for example the eccentric collars **50** which support ball bearings **53** and in which the upper roll shaft **22a** is inserted; and annular seal members **54** for ensuring sealing properties between the inner circumferences of the front base portions **21aL** and **21aR** of the left and right upper arms **21L** and **21R** and the outer circumferences of the eccentric collars **50**. In the present embodiment, the ball bearings **53**, the eccentric collars **50** and the seal members **54** are provided in twos aligned in a front-rear relationship along the axis C, respectively, in the front base portions **21aL** and **21aR** of the left and right upper arms **21L** and **21R**.

[0093] The front base portions **21aL** and **21aR** of the left and right upper arms **21L** and **21R** are swingably supported on the upper arm front support portion **9a** through the upper roll shaft **22a**, the plates **51** and **52**, the eccentric collars **50**, and the ball bearings **53**. The upper roll shaft **22a**, the plates **51** and **52**, the eccentric collars **50**, and inner races of the ball bearings **53** are stationarily supported on the upper arm front support portion **9a**. The front base portions **21aL** and **21aR** of the left and right upper arms **21L** and **21R** are supported on the outer circumferences of the eccentric collars **50** so that they are swingable about the bearings.

[0094] At each of the inner circumferences of the front base portions **21aL** and **21aR** of the left and right upper arms **21L** and **21R**, an annular projection **21g** projecting radially inwardly is integrally formed. Outer races of the ball bearings **53** abut on the projection **21g** from the front and rear sides of the projection **21g** along the axis C2, at the inner circumferences of the front base portions **21aL** and **21aR** of the left and right upper arms **21L** and **21R**. The eccentric collars **50** have their end faces (orthogonal to the axis C2) abutting on each other from the front and rear sides along the axis C2 at a position exposed to the projection **21g**.

[0095] Each of the eccentric collars **50** integrally includes a hollow cylindrical cylinder portion **50a** which extends in parallel to the axis C2 and has a center axis coinciding with the center axis C11 or C12; a head portion **50b** which has a hollow cylindrical shape greater than the cylinder portion **50a** in diameter and which has a bearing surface **50s1** making contact with the plates **51** and **52**; and a projecting portion **50c** which projects from a transversely one end side of the head portion **50b** to a side opposite to the cylinder portion **50a** and which has a semicircular bearing surface **50s2**. For example, the eccentric collar **50** is made of metal, and the components of the eccentric collar **50** are integrally formed from the same material.

[0096] As viewed from the direction along the axis C2, the eccentric collar **50** provided at the front base portion **21aL** of

the left upper arm **21L** has an outer circumferential surface eccentrically deviated to the right side from the axis C2. As viewed from the direction along the axis C2, the projecting portion **50c** of the eccentric collar **50** provided at the front base portion **21aL** of the left upper arm **21L** projects to a side opposite to the cylinder portion **50a**, on the right side of the axis C2.

[0097] On the other hand, as viewed from the direction along the axis C2, the eccentric collar **50** provided at the front base portion **21aR** of the right upper arm **21R** has an outer circumferential surface eccentrically deviated to the left side from the axis C2. As viewed from the direction along the axis C2, the projecting portion **50c** of the eccentric collar **50** provided at the front base portion **21aR** of the right upper arm **21R** projects to a side opposite to the cylinder portion **50a**, on the left side of the axis C2.

[0098] Referring to FIG. 10, a left side surface **51l** of the front plate **51** makes contact with that surface **50s3** of the projecting portion **50c** of the front eccentric collar **50** provided at the front base portion **21aR** of the right upper arm **21R** which is exposed to the axis C2. A left side surface **52l** of the intermediate plate **52** makes contact with the surface **50s3** of the projecting portion **50c** of the rear eccentric collar **50** provided at the front base portion **21aR** of the right upper arm **21R** which is exposed to the axis C2. A right side surface **52r** of the intermediate plate **52** makes contact with that surface **50s3** of the projecting portion **50c** of the front eccentric collar **50** provided at the front base portion **21aL** of the left upper arm **21L** which is exposed to the axis C2.

[0099] A right side surface **51r** of the rear plate **51** makes contact with that surface **50s3** of the projecting portion **50c** of the rear eccentric collar **50** provided at the front base portion **21aL** of the left upper arm **21L** which is exposed to the axis C2.

[0100] For example, when the plates **51** and **52** are fixed to the vehicle body **1A** such as the upper arm front support portion **9a**, rotation of the projecting portion **50c** of each eccentric collar **50** about the axis C2 is restricted, so that each eccentric collar **50** can be restrained from slipping off about the axis C2.

[0101] The eccentric collar **50** is formed with a circular insertion hole **50h** which is opening in the direction along the axis C2 and which is centered on the axis C2. As viewed from the direction along the axis C2, the center axes C11 and C12 of the eccentric collars **50** provided at the front base portions **21aL** and **21aR** of the left and right upper arms **21L** and **21R** are shifted from each other, with the axis C2 therebetween. More specifically, as viewed from the direction along the axis C2, the center axis C11 of the eccentric collar **50** provided at the front base portion **21aL** of the left upper arm **21L** is deviated to the right side of the axis C2. On the other hand, the center axis C12 of the eccentric collar **50** provided at the front base portion **21aR** of the right upper arm **21R** is deviated to the left side of the axis C2.

[0102] Referring to FIGS. 10 and 12, the deviation amount (the distance in the vehicle width direction) between the center axis C11 of the eccentric collar **50** provided at the front base portion **21aL** of the left upper arm **21L** and the axis C2 of the upper roll shaft **22a** is denoted by symbol W1. In addition, the deviation amount (the distance in the vehicle width direction) between the center axis C12 of the eccentric collar **50** provided at the front base portion **21aR** of the right upper arm **21R** and the axis C2 of the upper roll shaft **22a** is denoted by symbol W2. In the present embodiment, the

deviation amount W1 between the center axis C11 and the axis C2 and the deviation amount W2 between the center axis C12 and the axis C2 is approximately equal, and are, for example, about 2 mm.

[0103] Referring to FIGS. 2, 3 and 6, the outer link member 25 extends substantially vertically. On the outer side of a lower portion of the outer link member 25, there is provided a knuckle support portion 25c having a gate-like shape opening to a transversely outer side in front view shown in FIG. 3. On the knuckle support portion 25c, a base portion 26a of the knuckle member 26 is steerably supported, through a steering shaft (kingpin shaft) 27 which is substantially parallel to the steering shaft 12 in side view. On the knuckle member 26, a front fender 2e is supported through front and rear stays 2f.

[0104] The knuckle member 26 integrally includes the base portion 26a supported by the outer link member 25; an axle support portion 26b provided at a vertically intermediate portion of the base portion 26a; an outer rod connection portion 26c provided forwardly of the axle support portion 26b; and caliper support portions 26d extending forward from upper and lower portions of the base portion 26a. On the axle support portion 26b, a hub 2b of the front wheel 2 is rotatably supported through an axle 28. A wheel 2a of the front wheel 2 is fastened and fixed to the outside of the hub 2b through a plurality of fastening portions 29 (see FIG. 1). At the outer circumference of the hub 2b, a brake rotor 2d is supported to be rotatable integrally with the hub 2b. The brake rotor 2d constitutes a front brake, on the basis of each of the left and right front wheels 2, together with a caliper 2c supported on the caliper support portion 26d.

[0105] In the front view shown in FIG. 3, center axes (kingpin axes) C9L and C9R of left and right kingpin shafts 27L and 27R are disposed as vertical lines which are offset equidistantly to the left and the right from the longitudinally extending vehicle body center line CL. In side view, on the other hand, the kingpin axes C9 are each disposed at an upwardly rearward inclination. It is to be noted that the kingpin axes C9 may be inclined in the front view in correspondence with the offset of the swinging center of the upper arms 21.

[0106] An intersection T1' of a downward extension line of the kingpin axis C9 with the road surface R in a side view is located forwardly of a grounding point T1 vertically under the axle center C5 of the front wheel 2, thereby generating a caster offset. The inclination angle of the kingpin axis C9 against the vertical direction in side view is the caster angle. The axle 28 of the front wheel 2 is offset to the front side of the kingpin axis C9 in side view.

[0107] Each of tires of the left and right front wheels 2L and 2R has a tread surface which is circular arc-shaped in section. At the time of banking (rolling) of the vehicle body, the left and right front wheels 2L and 2R are inclined similarly to the vehicle body due to the action of the two-front-wheel suspension system 4, whereby the grounding points are displaced sideways from the centers of the tread surfaces.

[0108] In this instance, since the length of the left and right tie rods 16L and 16R, the length of the left and right upper arms 21L and 21R, and the length of the left and right lower arms 23L and 23R are respectively equal, not any steering angle is generated even when the vehicle body is inclined.

[0109] Regulating means 60 (see FIG. 13) for regulating the turning angles of the front wheels 2L and 2R are provided between the link lower support portions 23c (which are transversely outer end portions of the left and right lower arms 23L

and 23R) and the left and right knuckle members 26L and 26R. The left and right outer link members 25L and 25R are supported on the left and right link upper and lower support portions 21c and 23c so as to be swingable about the swing shafts 25a and 25b (swing axes C11 and C12). The left and right outer link members 25L and 25R support the knuckle members 26L and 26R in a steerable manner about the left and right kingpin shafts 27L and 27R (kingpin axes C9L and C9R) which intersect the left and right swing shafts 25a and 25b (swing axes C11 and C12), respectively.

[0110] In FIGS. 13 to 15 in the following, for convenience of explanation, the regulating means 60 between the link lower support portion 23c of the left lower arm 23L and the left knuckle member 26L will be described. It is to be noted that the regulating means 60 between the link lower support portion 23c of the right lower arm 23R and the right knuckle member 26R is equivalent to the regulating means 60 between the link lower support portion 23c of the left lower arm 23L and the left knuckle member 26L. Therefore, a detailed description thereof is omitted.

[0111] Referring to FIG. 13, the regulating means 60 includes a first regulation member 61 provided at an outer end portion of the link lower support portion 23c of the left outer link member 25L; and a second regulation member 62 provided at a roller support portion 26e on a rear lower side of the left knuckle member 26L. The first regulation member 61 is disposed so as to overlap with an insertion portion 25e for insertion of the swing shaft 25b of the left link lower support portion 23cL, as viewed from the direction along the swing shafts 25a and 25b (the swing axis C12L).

[0112] As the first regulation member 61, there is used a cam which regulates the turning angle of the front wheel 2L in conjunction with a variation in the swinging angle about the swing axis C12L. The second regulation member 62 includes the cam 61 overlapping with the insertion portion 25e, as viewed in the direction along the swing axis C12L and a hollow cylindrical roller 62a capable of rolling along the outer circumference 61a of the cam 61 (a cam protuberance located at a transversely outer end edge of the cam 61). The cam 61, by making contact with the roller 62a, rotates the roller 62a about an axis C13. It is to be noted that the axis C13 is gradually inclined so that a vehicle rear portion thereof is located on a left upper side, as viewed in the direction along the swing axis C12L, in an upright state of the vehicle body in which the left-right swinging angle is 0 degrees. In addition, in the upright state, the roller 62a is spaced apart to the transversely outer side from the outer circumference 61a of the cam 61.

[0113] The cam 61 is so formed as to reduce the turning angle of the front wheel 2L when the swinging angle about the swing axis C12L exceeds a predetermined angle. The outer circumference 61a of the cam 61 is formed in an S shape, as viewed in the direction along the swing axis C12L. More specifically, the outer circumference 61a of the cam 61 has an upper edge portion 63 having a circular arc shape centered on the swing axis C12L as viewed in the direction along the swing axis C12L; a lower edge portion 64 protruding to a left lower side while gradually curving from a lower end of the upper edge portion 63 toward a radially outer side of a circle centered on the swing axis C12L; and an intermediate edge portion 65 located in a vertically intermediate area (boundary area) between the upper edge portion 63 and the lower edge portion 64.

[0114] Referring to FIGS. 2, 3 and 6, the shock absorber unit 31 includes a rod-type damper 32 extending substantially vertically, and a coil spring 33 wound around the damper 32. The shock absorber unit 31 is so inclined that its upper portion is located on the rear side with respect to the vertical direction in side view, and is disposed so as to extend orthogonally to the upper and lower roll shafts 22 and 24 in side view. In addition, the shock absorber unit 31 is disposed substantially vertically in front view shown in FIG. 3. It is to be noted that the shock absorber unit 31 may be inclined in front view correspondingly to the offset of the swinging center of the upper arms 21.

[0115] Referring to FIGS. 4 and 5, as viewed in the axial direction of the steering shaft 12, the turning trajectories KL and KR of the left and right front wheels 2L and 2R are in the shape of circular arcs centered on the center axes (kingpin axes) C9L and C9R of the left and right kingpin shafts 27L and 27R. As viewed in the axial direction of the steering shaft 12, the left and right shock absorber units 31L and 31R are disposed on the outer circumference sides of the turning trajectories KL and KR of the left and right front wheels 2L and 2R, namely, on the radially outer sides of the circles centered on the kingpin axes C9L and C9R.

[0116] An upper end portion of the shock absorber unit 31 is connected to a shock absorber upper support portion 44b of the shock absorber support arm 44 through an upper connection shaft 44c. A lower end portion of the shock absorber unit 31 is connected to the shock absorber lower support portion 23e5 of the lower arm 23 through a lower connection shaft 23e6. A center axis C6 (stroke axis) of the damper 32 of the shock absorber unit 31 is provided. Referring to FIGS. 1, 2 and 3, the stroke axes C6L and C6R of the left and right shock absorber units 31L and 31R are disposed rearwardly of rear ends of the left and right front wheels 2L and 2R.

[0117] On one end side in the radial direction of an upper end portion of the shock absorber unit 31, a holder 35 for holding a sub tank 34 of the damper 32 is integrally provided. The sub tank 34 is provided in the form of a hollow cylinder which is located on an outer circumference side of an upper portion of the shock absorber unit 31 and is parallel to the stroke axis. In the present embodiment, the sub tank 34 of the shock absorber unit 31 in the state of being mounted to the vehicle body is disposed on a transversely outer side of a shock absorber main body including the damper 32 and the coil spring 33. Referring to FIGS. 4 and 5, the sub tanks 34 of the left and right shock absorber units 31L and 31R are on the outer circumference sides of the turning trajectories KL and KR of the left and right front wheels 2L and 2R, namely, on the radially outer sides of the circles centered on the kingpin axes C9L and C9R, as viewed in the axial direction of the steering shaft 12. For example, the sub tank 34 is a reservoir tank for the shock absorber unit 31.

[0118] The shock absorber unit 31 strokes between the lower arm 23 and the shock absorber support arm 44 in response to an input of shock or the like to the front wheel 2, thereby to absorb the shock or the like inputted to the front wheel 2 and to attenuate vertical movements of the front wheel 2. The shock absorber unit 31 is disposed forwardly of the engine 3 and rearwardly of the front wheel 2 in side view. Referring to FIGS. 4 and 5, the left and right shock absorber units 31L and 31R are disposed within the transverse width of the engine 3, as viewed in the axial direction of the steering shaft 12, and are disposed adjacent to a front portion of the engine 3.

[0119] The shock absorber support arm 44 is provided in an integral form obtained, for example, by integral forming of a metallic material. The shock absorber support arm 44 integrally has the left and right arm portions 44aL and 44aR at left and right outer sides of the base portion 45, and integrally has the rear swing arm 46 upwardly of the base portion 45. The left and right arm portions 44aL and 44aR are provided at outer ends thereof with the shock absorber upper support portions 44b which support upper end portions of the left and right shock absorber units 31L and 31R. On the shock absorber upper support portions 44b, upper end portions of the left and right shock absorber units 31L and 31R are respectively supported through the upper connection shafts 44c which are parallel to the shock absorber swing shaft 45a. The left and right arm portions 44aL and 44aR extend from left and right outer sides of the base portion 45 (supported on the vehicle body 1A in a swingable manner) while being displaced toward left and right outer rear sides, respectively, and reach the shock absorber upper support portions 44b while assuming a crank-like form as viewed in the axial direction of the steering shaft 12 as shown in FIG. 4. The center axis of the shock absorber swing shaft 45a (the swinging center of the shock absorber support arms 44) is denoted by symbol C8.

[0120] Referring to FIGS. 4, 6 and 7, the steering link mechanism 17 is disposed at a position spaced forward from the steering shaft 12. The steering link mechanism 17 includes: a front link member 15 extending in the transverse direction; and left and right link members 14L and 14R extending rearward from left and right end portions of the front link member 15. Each of base end portions 14a as rear end portions of the left and right link members 14L and 14R is connected to the link support portion 9c of the front suspension frame body 5 in a rotatable manner through a rear link rotating shaft 14c extending substantially in parallel to the kingpin axis C9 in side view. To front end portions of the left and right link members 14L and 14R, left and right end portions of the front link member 15 are connected in a rotatable manner through front link rotating shafts 14b parallel to the rear link rotating shafts 14c.

[0121] Under longitudinally intermediate portions of the left and right link members 14L and 14R, inner rod connection portions 14d for connecting inner end portions of the left and right tie rods 16L and 16R are provided in a projecting form. Outer end portions of the left and right tie rods 16L and 16R are connected to the outer rod connection portions 26c of the left and right knuckle members 26L and 26R. Spherical bearings 16a and 16b are provided respectively at the inner and outer end portions of the left and right tie rods 16L and 16R. The inner and outer end portions of the left and right tie rods 16L and 16R are connected to the inner and outer rod connection portions 14d and 26c through these spherical bearings 16a and 16b by, for example, bolts inserted from the front side.

[0122] In one (in FIGS. 7(a) to 7(c), the left link member 14L) of the left and right link members 14L and 14R, a connection arm 14f for connecting a front end portion of the link rod 13 is provided in a projecting manner at the base end portion 14a supported by the front suspension frame body 5. Spherical bearings 13a and 13b are provided respectively at front and rear end portions of the link rod 13. The front and rear end portions of the link rod 13 are connected to the connection arm 14f and the bottom bracket 12a through these

spherical bearings **13a** and **13b** respectively by, for example, bolts inserted from the upper side or the lower side.

[0123] The bottom bracket **12a**, the connection arm **14f** and the link rod **13** constitute a substantially parallel link as viewed in the axial direction of the steering shaft **12**, and interlocks rotation of the steering handlebar **11** with rotation of the left link member **14L**. In addition, when the left link member **14L** is rotated, the right link member **14R** is also rotated through the front link member **15**.

[0124] The steering link mechanism **17** exhibits an equivalent action to that of an Ackerman mechanism. More specifically, when the left and right front wheels **2L** and **2R** are steered through the steering link mechanism **17**, the steering angle of the front wheel **2** on the inner wheel side of the left and right front wheels **2L** and **2R** becomes greater than the steering angle of the front wheel **2** on the outer wheel side.

[0125] For instance, as viewed in the axial direction of the steering shaft **12** (see FIGS. **7(b)** and **7(c)**), the connection positions between the inner end portions of the left and right tie rods **16L** and **16R** and the inner rod connection portions **14d** of the left and right link members **14L** and **14R** are set at positions deviated from the axes of the left and right link members **14L** and **14R**, whereby the steering characteristics of the left and right front wheels **2L** and **2R** can be changed. More specifically, as shown in FIGS. **7(b)** and **7(c)**, as viewed in the axial direction of the steering shaft **12**, the connection positions between the inner end portions of the left and right tie rods **16L** and **16R** and the inner rod connection portions **14d** of the left and right link members **14L** and **14R** are located on the transversely inner sides of the axes of the left and right link members **14L** and **14R**. Therefore, the Ackerman percentage can be set higher. More specifically, the steering angle of the front wheel **2** on the inner wheel side of the left and right front wheels **2L** and **2R** can be set larger than the steering angle of the front wheel **2** on the outer wheel side. Consequently, desired turning characteristics can be obtained. The “Ackerman percentage” means a ratio concerning the steering angles of the left and right front wheels **2L** and **2R** at the time of turning (cornering).

[0126] In FIGS. **15(a)** to **15(c)**, for convenience of explanation, there is shown a case where the Ackerman percentage is 0, or where the connection positions between the inner end portions of the left and right tie rods **16L** and **16R** and the inner rod connection portions **14d** of the left and right link members **14L** and **14R** are located on the axes of the left and right link members **14L** and **14R** as viewed in the axial direction of the steering shaft **12**.

[0127] As aforementioned, the cam **61** (first regulation member) is so formed as to reduce the turning angle of the front wheel **2L** when the swinging angle about the swing axis **C12L** exceeds a predetermined angle.

[0128] Referring to FIGS. **14(a)** and **15(a)**, when the left and right front wheels **2L** and **2R** are steered to the left side through the steering link mechanism **17** in a condition in which the vehicle body is upright, the upper edge portion **63** of the outer circumference **61a** and the roller **62a** contact each other. See FIG. **14(a)** and FIG. **15(a)**. By this, direct contact between the vehicle body **1A** and the front wheels **2L** and **2R** is avoided.

[0129] When the left and right front wheels **2L** and **2R** are steered to the left side through the steering link mechanism **17** in a state in which the vehicle body is banking to such an extent as not to reach full banking (a state of banking at a bank angle slightly shallower than that at full banking), the

intermediate edge portion **65** located at the vertically intermediate portion (boundary) between the upper edge portion **63** and the lower edge portion **64** of the outer circumference **61a** and the roller **62a** contact each other. See FIG. **14(b)** and FIG. **15(b)**. Up to this point, the steering angle is constant at full steering.

[0130] When the left and right front wheels **2L** and **2R** are steered to the left side through the steering link mechanism **17** in a substantially full banking state of the vehicle body, the lower edge portion **64** of the outer circumference **61a** and the roller **62a** contact each other. See FIG. **14(c)** and FIG. **15(c)**. By this, the steering angle of the left front wheel **2L** is limited to a steering angle smaller than that at the full steering. In addition, the steering angle of the right front wheel **2R** is also limited similarly through the steering link mechanism **17**.

[0131] In the present embodiment, in order to ensure that the steering angles of the front wheels **2L** and **2R** are varied according to the roll angle (bank angle), the moving trajectory of the roller **62a** is set to be along the circular arc centered on the swing axis **C12L**, as viewed from the direction along the swing axis **C12L**, in a range from an upright state of the vehicle body to a shallow bank angle. On the other hand, in a range from the shallow bank angle to the full banking, the moving trajectory of the roller **62a** is set to go toward a left lower side (the direction of arrow **V1** in FIG. **15(c)**) while gently curving toward the radially outer side of the circle centered on the swing axis **C12L**. It is to be noted that the configuration in which the steering angle is set constant at full steering up to an intermediate point in the course is not limitative, and the steering angle may be regulated by varying the cam profile, for example, gradually varying the outer circumference **61a** of the cam **61**.

[0132] As has been described above, the saddle type vehicle **1** in the present embodiment includes the actuator **41** capable of controlling the swinging of the shock absorber support arm **44** and thus, the rolling of the vehicle body **1A**. The housing **42** of the actuator **41** forms the front suspension frame **5** of a closed structure together with the frame main body **6** which supports the left and right upper arms **21** and lower arms **23** of the vehicle body **1A**. Owing to this configuration, it is ensured that the actuator **41** swings laterally together with the vehicle body **1A**, and the actuator **41** and the front suspension frame body **5** do not interfere with each other at the time of rolling of the vehicle body **1A**. In addition, part of the swinging space for the front suspension arm body **5** can be utilized as a swinging space for the actuator **41**, and interference with the surrounding component parts can be restrained. Since the front suspension frame body **5** is divided into the frame main body **6** and the housing **42** of the actuator **41**, the productivity and processability of the individual configurations can be enhanced. In addition, by configuring the front suspension frame body **5** in a closed loop form, a reduction in weight and enhancement of rigidity can be realized. Further, the spacing between the left and right front wheels **2L** and **2R** (vehicle width) can be made or kept small by, for example, rendering the front suspension frame body **5** compact.

[0133] With the actuator **41** disposed in a transversely central area and upwardly of the left and right upper arms **21** and lower arms **23**, the actuator **41** can be disposed in such a position so as not to interfere with the left and right upper arms **21** and lower arms **23**. As a result, it is possible to

enhance the degree of freedom in laying out the left and right upper arms 21 and lower arms 23, and to realize a smaller vehicle width.

[0134] The actuator 41 is connected to the frame main body 6 so as to straddle and close the upper opening portion 6b of the frame main body 6 upwardly of the upper opening portion 6b, and the upper arms 21 are supported in the upper opening portion 6b. This enables the upper arms 21 to be easily mounted or assembled onto the frame main body 6, thereby enhancing workability. In addition, since the actuator 41 constitutes an upper part of the front suspension frame body 5 of a closed loop form, the actuator 41 can be disposed apart from and be restrained from interfering with the frame main body 6 and peripheral component parts. In addition, since the actuator 41 is connected to the frame main body 6 while being disposed so as to straddle the upper opening portion 6 upwardly of the latter, the front and rear end portions of the actuator 41 which are located on opposite sides of the upper opening portion 6b can be connected to and firmly supported by the frame main body 6. Consequently, the actuator 41 can be restrained from shaking and vibration.

[0135] With the rear base portions 21b of the upper arms 21 supported in the upper opening portion 6b, the actuator 41 can be supported on the frame main body 6 at a position similar to those of the rear end portions 21b of the upper arms 21. As a result, the actuator 41 can be restrained from protruding forward, the front suspension frame body 5 can be made compact, and the actuator 41 being heavy can be disposed closer to the center of the vehicle body, thereby realizing a mass concentration.

[0136] In addition, since the actuator 41 has the driving shaft 41 coaxial with the base portion 45 of the shock absorber support arm 44, the driving shaft 41a of the actuator 41 and the base portion 45 of the shock absorber support arm 44 can be connected coaxially with each other. Accordingly, the swinging of the shock absorber support arm 44 and, hence, the rolling of the vehicle body 1A can be controlled by the actuator 41 while adopting a simple and compact mechanism.

[0137] It is to be noted that while the above embodiment has been described by showing an example in which the actuator 41 and the shock absorber support arm 44 are interlocked with each other through an interlock mechanism such as the connection link 48, this is not restrictive. For instance, the actuator and the shock absorber support arm may be disposed coaxially with each other.

[0138] A two-front-wheel suspension system 104 according to a modification of the embodiment will be described below, referring to FIGS. 16 and 17. In FIGS. 16 and 17, components equivalent to the components in the above embodiment are denoted by the same symbols as used above, and detailed descriptions of them are omitted.

[0139] Referring to FIGS. 16 and 17, in the two-front-wheel suspension system 104 according to the modification, at a rear portion of the actuator 41, there is provided a front swing arm 143 projecting upwardly and adapted to swing about the axis C7. The front swing arm 143 is fixed to the driving shaft 41a of the actuator 41 and swings about the axis C7. The front swing arm 143 is opposed to a rear swing arm 146 of a shock absorber support arm 144 with a spacing therebetween along the axial direction of the actuator 41. More specifically, as viewed from the axis C8, a tip portion 143b of the front swing arm 143 (a connection portion between a connection device 147 and the front swing arm 143) is opposed to a tip portion 146b of the rear swing arm 146

(a connection portion between the connection device 147 and the rear swing arm 146) with an interval therebetween. At a connection portion 140 between the front swing arm 143 and the rear swing arm 146, there is provided the connection device 147 (load detection unit) which enables them to swing as one body. The connection device 147 functions also as a load detection unit which detects a load transmitted between the front and rear swing arms 143 and 146.

[0140] The connection device 147 is, for example, in the form of a hollow cylinder parallel to the shock absorber swing shaft 45a. Bolts 147a and 147b penetrating tip portions of the front and rear swing arms 143 and 146 from the front side or the rear side are engaged to central portions of front and rear ends of the connection device 147, whereby the connection device 147 is fastened and fixed to the tip portions of the front and rear swing arms 143 and 146. The connection device 147 incorporates therein a load sensor adapted to electrically detect a load (torque) about the shock absorber swing shaft 45a which is generated between the front and rear swing arms 143 and 146. A detected value of the load (torque) is inputted to an ECU (not shown) adapted to control the operation of the actuator 41.

[0141] The load about the shock absorber swing shaft 45a which is generated between the front and rear swing arms 143 and 146 is generated according to an operation resistance (torque) of the front swing arm 143 when the shock absorber support arm 144 is about to swing relative to the actuator 41 which is supported on the vehicle body side. More specifically, when the vehicle body rolls, a load about the shock absorber swing shaft 45a is generated between the front and rear swing arms 143 and 146, according to the operation resistance of the front swing arm 143. The ECU controls the driving of the actuator 41 according to the detected value of the load. The swinging center (axis C7) of the front swing arm 143 of the actuator 41 and the swinging center (axis C8) of the rear swing arm 146 of the shock absorber support arm 144 are coaxially with each other, whereby an interlock mechanism between them is made simple and compact.

[0142] It is to be noted that the present invention is not limited to the above embodiment. For example, the application of the present invention is not limited to a three-wheeled vehicle having left and right front wheels and a single rear wheel, and the invention may be applied to a four-wheeled vehicle having left and right front wheels and left and right rear wheels.

[0143] The configuration in the above embodiment is mere an example of the present invention, and various modifications are possible without departing from the spirit or scope of the present invention, such as by replacing a component of the embodiment with a known component.

[0144] The invention being thus described, it will be obvious that the same may be varied in many ways. Such variations are not to be regarded as a departure from the spirit and scope of the invention, and all such modifications as would be obvious to one skilled in the art are intended to be included within the scope of the following claims.

What is claimed is:

1. A rolling vehicle having a pair of left and right front wheels and having a vehicle body capable of rolling, the rolling type vehicle comprising:

a pair of left and right arm members supported in a swingable manner by the vehicle body on inner sides in a transverse direction and which respectively support the

- pair of left and right front wheels on outer sides in the transverse direction, respectively;
- a shock absorber support arm supported by the vehicle body at a transversely central portion thereof, said shock absorber support arm being connected to the pair of left and right arm members through shock absorber units on outer sides in the transverse direction, respectively; and an actuator for controlling the swinging of the shock absorber support arm;
- wherein the actuator constitutes a front suspension frame body of a closed structure together with a vehicle body side frame for supporting the left and right arm members and the shock absorber support arm of the vehicle body.
2. The rolling vehicle according to claim 1, wherein the actuator is disposed upwardly of the left and right arm members in a central area in the transverse direction.
3. The rolling vehicle according to claim 1, wherein the pair of left and right arms each include an upper arm and a lower arm;
- the vehicle body side frame includes an opening portion opening to an upper side;
- the actuator is connected to the vehicle body side frame so as to straddle and close the opening portion upwardly of the opening portion; and
- the upper arms are supported in the opening portion.
4. The rolling vehicle according to claim 2, wherein the pair of left and right arms each include an upper arm and a lower arm;
- the vehicle body side frame includes an opening portion opening to an upper side;
- the actuator is connected to the vehicle body side frame so as to straddle and close the opening portion upwardly of the opening portion; and
- the upper arms are supported in the opening portion.
5. The rolling vehicle according to claim 3, wherein the upper arm has an end portion supported by the vehicle body side frame, the end portion branched into a front base portion and a rear base portion; and
- the rear base portions of the upper arms are supported in the opening portion.
6. The rolling vehicle according to claim 4, wherein the upper arm has an end portion supported by the vehicle body side frame, the end portion branched into a front base portion and a rear base portion; and
- the rear base portions of the upper arms are supported in the opening portion.
7. The rolling vehicle according to claim 1, wherein the actuator has an output portion coaxial with a shaft support portion of the shock absorber support arm.
8. The rolling vehicle according to claim 2, wherein the actuator has an output portion coaxial with a shaft support portion of the shock absorber support arm.
9. The rolling vehicle according to claim 3, wherein the actuator has an output portion coaxial with a shaft support portion of the shock absorber support arm.
10. The rolling vehicle according to claim 5, wherein the actuator has an output portion coaxial with a shaft support portion of the shock absorber support arm.
11. A suspension system for a vehicle comprising:
- a pair of left and right arm members supported in a swingable manner by a vehicle body on inner sides in a trans-

- verse direction for supporting left and right front wheels on outer sides in the transverse direction, respectively;
- a shock absorber support arm supported by the vehicle body at a transversely central portion thereof, said shock absorber support arm being connected to the pair of left and right arm members through shock absorber units on outer sides in the transverse direction, respectively; and an actuator for controlling the swinging of the shock absorber support arm, said actuator including a front suspension frame body of a closed structure together with a vehicle body side frame for supporting the left and right arm members and the shock absorber support arm of the vehicle body.
12. The suspension system for a vehicle according to claim 11, wherein the actuator is disposed upwardly of the left and right arm members in a central area in the transverse direction.
13. The suspension system for a vehicle according to claim 11, wherein the pair of left and right arms each include an upper arm and a lower arm;
- the vehicle body side frame includes an opening portion opening to an upper side;
- the actuator is connected to the vehicle body side frame so as to straddle and close the opening portion upwardly of the opening portion; and
- the upper arms are supported in the opening portion.
14. The suspension system for a vehicle according to claim 12, wherein the pair of left and right arms each include an upper arm and a lower arm;
- the vehicle body side frame includes an opening portion opening to an upper side;
- the actuator is connected to the vehicle body side frame so as to straddle and close the opening portion upwardly of the opening portion; and
- the upper arms are supported in the opening portion.
15. The suspension system for a vehicle according to claim 13, wherein the upper arm has an end portion supported by the vehicle body side frame, the end portion branched into a front base portion and a rear base portion; and
- the rear base portions of the upper arms are supported in the opening portion.
16. The suspension system for a vehicle according to claim 14, wherein the upper arm has an end portion supported by the vehicle body side frame, the end portion branched into a front base portion and a rear base portion; and
- the rear base portions of the upper arms are supported in the opening portion.
17. The suspension system for a vehicle according to claim 11, wherein the actuator has an output portion coaxial with a shaft support portion of the shock absorber support arm.
18. The suspension system for a vehicle according to claim 12, wherein the actuator has an output portion coaxial with a shaft support portion of the shock absorber support arm.
19. The suspension system for a vehicle according to claim 13, wherein the actuator has an output portion coaxial with a shaft support portion of the shock absorber support arm.
20. The suspension system for a vehicle according to claim 15, wherein the actuator has an output portion coaxial with a shaft support portion of the shock absorber support arm.